

NZ DIPLOMA IN SCREEN PRODUCTION 2025

Information for international applicants

Napier

Build a career in the screen industry.

This programme provides students with hands-on experience using camera, sound and editing equipment whilst exploring opportunities for working in film, TV, web and non-broadcast media.

This one year project-based programme is designed for people who want to gain the skills and knowledge required to work in the screen industry. You will learn how to write a script, produce, direct and edit video and sound whilst working in a team environment mimicking the real world of Screen Production.

The programme has been designed to give you as much “hands-on” experience with professional camera, sound and editing equipment as practical. We primarily use state-of-the-art digital cameras for recording images then edit those images on non-linear digital editing systems, as used in the industry.

With your diploma completed successfully you can continue on to the second year of the Bachelor of Creative Practice.

CAREER OPPORTUNITIES

You will gain a broad introduction, as well as secure a good understanding, of different aspects of the screen industry. This will prepare you for employment or enable you to go on to further study in the Bachelor of Creative Practice in Screen Production.

The depth of the course allows you to look at opportunities working in film, television, web and non-broadcast media.

We aim to give you the skills to build your career in the area of your choice whether that be camera, sound, editing, directing, script writing, producing or another specialised field.

Further your study pathway with the Bachelor of Creative Practice followed by postgraduate study.

CAREER OUTLOOK

Visit the following websites for the latest information about job opportunities in New Zealand for your chosen career path.

careers.govt.nz

mbie.govt.nz

immigration.govt.nz



NZ DIPLOMA IN SCREEN PRODUCTION

Start	17 February
Length	1 year full-time
Level	5
Credits	120
Fees¹	NZ\$26,000
IELTS	5.5 (academic) with no band lower than 5.0 or equivalent OR accepted international equivalent qualification
Class times	On-campus classes are scheduled between 9.00am and 3.00pm, Monday to Thursday. Approximately 20 classroom hours per week.
Self-directed study	Approximately 17.5 hours per week.

¹. All fees shown in this information are in New Zealand dollars and include Goods and Services Tax (GST) at current rates. If you need to study for more than one year to complete your qualification, your fees in the second year, and subsequent years, will not be known when you first enrol.



TIMETABLE

Your study time will be made up of contact time (class times, tutorials, industry-based learning) and non-contact time (your own self-directed study).

CONTACT TIME

On-campus classes are usually scheduled between 8.00am-5.00pm, Monday to Thursday.

Full-time students spend approximately 20 hours on campus per week.

NON-CONTACT TIME

You should plan to spend 17.5 hours on self-directed study per week.

ENTRY CRITERIA¹

The academic entry requirement for the NZ Diploma in Screen Production is either:

- University Entrance, as defined by the NZQA; or
- Evidence regarded as sufficient by the Discipline Leader of the capability to undertake and complete the programme of study; or
- At the discretion of EIT, where the applicant is over 20 years of age and demonstrates the capability to undertake and complete the programme of study.

All applicants will be required to attend an interview with Discipline Leader.

ENGLISH LANGUAGE ENTRY REQUIREMENTS²

PTE (Academic) score of 50 with no band score lower than 42 or IELTS (Academic) score of 5.5 with no band score lower than 5.0 (or equivalent) achieved within the last two years.

ASSESSMENTS

Each course will be assessed for the required NZQA graduate outcomes so that you will have fulfilled all these by the completion of all courses.

FACILITIES

At IDEAschool's Screen Production facilities in Hawke's Bay there are two working studios complete with broadcast standard cameras, studio quality lighting and professional sound equipment, editing systems, a green screen and a surround-sound theatre. Each student has their own Apple iMac work space.

THE EXPERIENCE YOU NEED & THE SUPPORT TO SUCCEED

When you study at EIT you'll get the kind of experiences that will help you gain the knowledge and skills to get ahead.

You'll also be supported by lecturers and tutors who are here for you, within a learning environment where you are treated as an individual, not just a number. They'll know your name and you'll receive one-on-one attention to make sure you get the support to succeed.



1. To study onshore in New Zealand, students must meet current Immigration New Zealand requirements for a student visa. For more information please see the [Immigration New Zealand website](https://www.immigration.govt.nz/new-zealand-visas/visas/study).

2. Further information about NZQA English language entry requirements for international students can be found at www2.nzqa.govt.nz/tertiary/english-language-entry-requirements-for-international-students/



COURSE DESCRIPTIONS

COURSE NO.	BRIEF DESCRIPTION	LEVEL	CREDITS
DSPEP1	EPISODE ONE: In the Beginning This course aims to provide students with basic knowledge and skills of professional screen production. Students familiarize themselves with professional camera, sound, lighting and editing equipment.	5	30
DSPEP2	EPISODE TWO: Once Upon a Time This course aims to develop students' knowledge and skills in dramatic story telling. Students are introduced to script writing and story boarding. They write and produce their own project.	5	30
DSPEP3	EPISODE THREE: Is That a Fact? This course aims to develop students' knowledge and skills to produce a factual screen production. Students learn to research, write, interview and prepare and produce a mini documentary.	5	30
DSPEP4	EPISODE FOUR: The Big Reveal This course aims to develop the students' skills and knowledge to produce and direct a multi-camera, multimedia live show. Students bring together the different skills they have learnt through the year to work on new media projects and a live studio production.	5	30

THE EXPERIENCE YOU NEED & THE SUPPORT TO SUCCEED

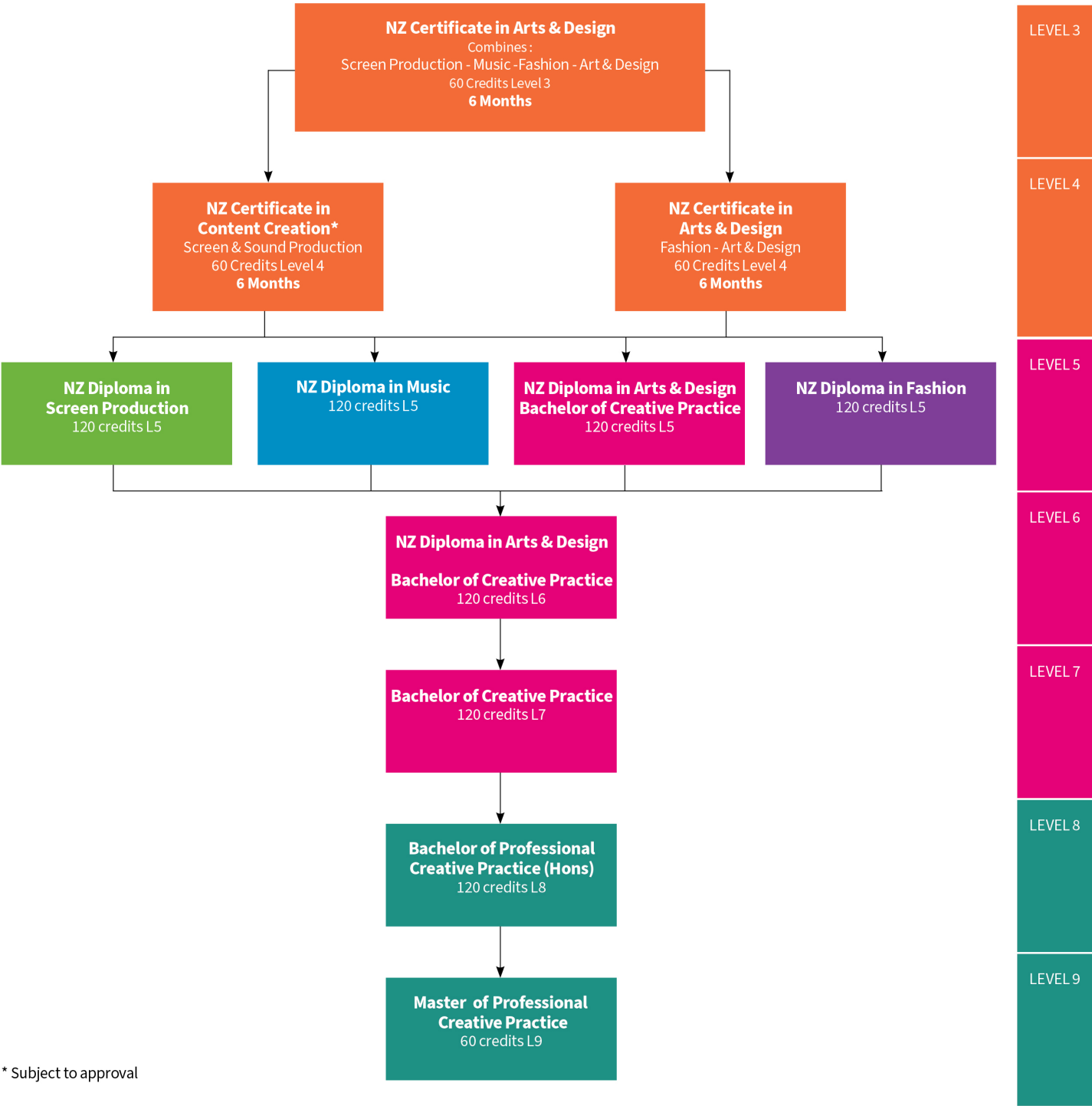
When you study at EIT you'll get the kind of experiences that will help you gain the knowledge and skills to get ahead.

You'll also be supported by lecturers and tutors who are here for you, within a learning environment where you are treated as an individual, not just a number. They'll know your name and you'll receive one-on-one attention to make sure you get the support to succeed.



Disclaimer: All information pertains to international students, and is correct at the time of publication but is subject to change without notice. The programme fees, other costs, entry requirements, duration and programme start dates are for 2025 and are listed as a guide only. Conditions apply. EIT (a Business Division of Te Pūkenga – New Zealand Institute of Skills and Technology) reserves the right to cancel or postpone any programme or course for any reason and shall not be liable for any claim other than that proportion of the programme fee which the cancelled or postponed portion bears.

PROGRAMME PATHWAY



* Subject to approval