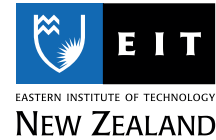


GRADUATE DIPLOMA IN PROFESSIONAL ACCOUNTING 2022



Information for International applicants

Napier Campus

This programme is an efficient way for accounting graduates to achieve associate membership of the accounting professions. It is specifically designed for accounting graduates or graduates of an accounting related degree to complete the academic accounting requirements of the professional bodies so they can specialise in an accounting career.

The programme is designed for students who already have an accounting major but have not yet reached the academic requirements for associate membership of the professional bodies: Chartered Accountants Australia and New Zealand (CA ANZ) and CPA Australia.

At the end of this programme graduates will:

- Have met the academic accounting requirements for provisional membership of the professional bodies (CA ANZ and CPA Australia)
- Be prepared to start their practical experience with either professional body. At the start of the programme all students intending to enrol in this programme can make an appointment with the Programme Coordinator to discuss your course of study

CAREER OUTCOMES

This qualification completes the academic accounting requirements of the accounting professional bodies so students can commence their practical experience to become a Chartered Accountant.

This will lead to a wide number of employment opportunities in professional practice, industry and the public sector.

CAREER OUTLOOK

Visit the following websites for the latest information about job opportunities in New Zealand for your chosen career path.

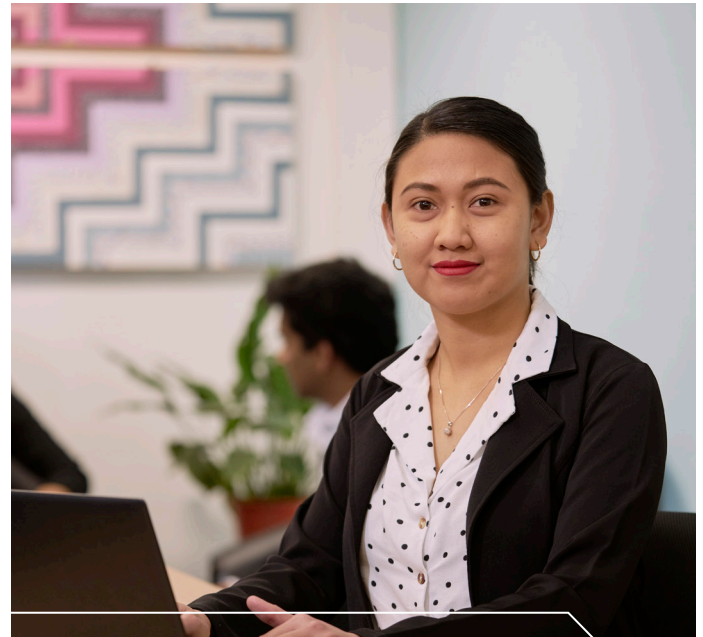
CareersNZ offers a range of tools to help you explore jobs and plan your career: careers.govt.nz

For extensive information on labour supply and demand for occupations visit: occupationoutlook.mbie.govt.nz

For information about the Long Term Skill Shortage List visit: skillshortages.immigration.govt.nz

ACADEMIC STAFF

Conrad Schumacher	LLB (Hons), BA (Hons)
Louise MacKenzie	CA, CPA, MApM (Dist) PGDipEdLM, PGDipTchg (Sec), BBS
Mark Scott	BComm, FCA



“The Graduate Diploma in Professional Accounting is practically based on real scenarios which means we are being taught about what is happening in the business world.”

MARY ROSS SININING | The Philippines

Qualification	Graduate Diploma in Professional Accounting
Level	Level 7
Length	1 year
Start dates	14 Feb, 18 July
Fees	NZ\$ 20,400 per year
IELTS	6.0 (academic) with no band score lower than 5.5 or equivalent.
Total credits	120 credits
Class times	Classes are scheduled between 8.00am and 5.00pm Monday - Friday. Approximately seven classroom hours per course per week
Study hours	Approximately three hours for each classroom hour



WHAT YOU WILL LEARN

Students will focus on financial and management accounting, business finance, auditing, taxation and law.

FACILITIES

The campus is a pleasant environment for study with a range of general purpose rooms and lecture theatres all with data projector equipment. In the state-of-the-art Information Technology Complex there are nine networked computer laboratories with 24 student stations in each.

The library provides plentiful computer work stations with seven day access for students, group meeting rooms and the wide range of academic resources.

ENTRY CRITERIA

ACADEMIC ENTRY REQUIREMENTS

Successful completion of an appropriate degree in Accounting.

ENGLISH LANGUAGE ENTRY REQUIREMENTS

PTE (Academic) score of 50 with no band score lower than 42 or IELTS (Academic) score of 6.0 with no band score lower than 5.5 (or equivalent) achieved within the last 2 years.



COURSE LIST

Students will complete 120 credits (8 courses), of which a minimum of 72 credits (5 courses) must be at level 7. The programme will be individually structured to meet the academic requirements of the professional bodies.

All courses have a total of 150 learning hours, usually including 56 teaching hours and independent study of 94 hours.

Please note: Pre-requisites may apply to some courses. One additional Business Law course will be necessary.

There is a strong likelihood that you may have to do some extra courses in order to meet the competency requirements for provisional membership to professional bodies which will incur additional costs.

LEVEL 6		CREDITS
AC6.01	Financial Accounting	15
AC6.02	Management Accounting	15
AC6.03	Principles of Managerial Finance	15
AC6.04	Taxation	15
AC6.05	Corporate Law	15
LEVEL 7		CREDITS
AC7.01	Advanced Financial Accounting	15
AC7.02	Advanced Management Accounting	15
AC7.04	Advanced Taxation	15
AC7.05	Audit and Assurance Services	15
	Elective	15



COURSE DESCRIPTIONS

NB: Courses are offered subject to sufficient enrolments being received. In the following descriptions:

Pre-requisite – courses which must be studied before

Co-requisite – courses which can be studied before or at the same time

COURSE NO.	BRIEF DESCRIPTION	CREDITS	LEVEL
LEVEL 6			
AC6.01	<p>Financial Accounting To provide students with skills for preparation and use of financial statements prepared in accordance with New Zealand Generally Accepted Accounting Practice (GAAP).</p> <p>Pre-requisites: DBA5.01 Introduction to Accounting and Taxation, DBA5.02 Applied Accounting, DBA5.03 Analysis of Financial Information, DBA5.04 Budgets for Planning and Control or equivalent knowledge and skills</p>	15	6
AC6.02	<p>Management Accounting To develop the skills to apply the fundamental management accounting concepts and techniques applicable in the management and control of organisations.</p> <p>Pre-requisites: DBA5.01 Introduction to Accounting and Taxation, DBA5.02 Applied Accounting, DBA5.03 Analysis of Financial Information, DBA5.04 Budgets for Planning and Control or equivalent knowledge and skills</p>	15	6
AC6.03	<p>Principles of Managerial Finance To enable students to use the basic tools and techniques of finance and financial management and to apply them in routine situations.</p> <p>Pre-requisite: DBA5.01 Introduction to Accounting and Taxation or equivalent knowledge and skills Co-requisite: BU5.05 Quantitative Analysis or equivalent knowledge and skills</p>	15	6
AC6.04	<p>Taxation To provide students with an overview of the New Zealand taxation system with a focus on the compliance requirements of taxpayers.</p> <p>Pre-requisite: DBA5.01 Introduction to Accounting and Taxation or equivalent knowledge and skills</p>	15	6
AC6.05	<p>Corporate Law To develop an understanding of the legal rules relating to companies, from incorporation to dissolution.</p> <p>Pre-requisite: BU5.06 Law for Business or equivalent knowledge and skills</p>	15	6

LEVEL 7

AC7.01	<p>Advanced Financial Accounting To develop an understanding and critical awareness of financial reporting issues in New Zealand and internationally and demonstrate skill in preparing complex financial statements.</p> <p>Pre-requisite: AC6.01 Financial Accounting or equivalent knowledge and skills</p>	15	7
AC7.02	<p>Advanced Management Accounting To identify, evaluate and apply appropriate traditional and contemporary management accounting tools and theories in a business context.</p> <p>Pre-requisite: AC6.02 Management Accounting or equivalent knowledge and skills</p>	15	7
AC7.04	<p>Advanced Taxation To provide students with skills to research tax problems and recommend solutions, including the ability to integrate non-tax factors into their recommendations.</p> <p>Pre-requisites: AC6.04 Taxation or equivalent knowledge and skills</p>	15	7
AC7.05	<p>Audit and Assurance Services To develop a critical awareness of the nature and purpose of assurance and auditing engagements, the regulatory and professional environment and the process of conducting financial statement audits in New Zealand.</p> <p>Pre-requisite: AC6.01 Financial Accounting or equivalent knowledge and skills</p>	15	7

EIT is now part of Te Pūkenga - New Zealand Institute of Skills and Technology

Te Pūkenga will bring together New Zealand's Institutes of Technology, Polytechnics, and Industry Training Organisations to build a network of on-campus, online, offshore and work-based education and training. The quality of education we deliver will not only remain, it will be strengthened by being part of the extensive Te Pūkenga network. From 2023 your enrolment will transfer to Te Pūkenga and you will become part of the extensive Te Pūkenga network in New Zealand.



Disclaimer: The Eastern Institute of Technology Limited is a subsidiary of Te Pūkenga – New Zealand Institute of Skills and Technology. All information in this publication pertains to international students, and is correct at the time of publishing but is subject to change. EIT reserves the right to amend/withdraw programmes or courses. From 2023 programmes may be subject to review as part of the Reform of Vocational Education and Training. As the review is ongoing, this document is correct at the time of publishing but the courses outlined may change over time. For full programme entry requirements visit eit.ac.nz.

Programme content is based on current information and may be subject to change. EIT reserves the right to cancel or postpone any programme and shall not be liable for any claim other than that proportion of the programme fee which the cancelled or postponed portion bears.