

2025



NZ Diploma in Screen Production

Level 5

Build a career in the screen industry.

This programme provides students with hands-on experience using camera, sound and editing equipment whilst exploring opportunities for working in film, TV, web and non-broadcast media.

With your diploma completed successfully you can continue on to the second year of the Bachelor of Creative Practice.

Location IDEASchool Hawke's Bay and
Rāngai Film Studio Tairāwhiti

Start February

Length One year full-time

Contact Irina Konig
Phone: 06 830 1121
Email: ikonig@eit.ac.nz

Svetlana Eliason
Phone: 06 830 1183
Email: seliason@eit.ac.nz

IDEASchool
TE KURA AHU TAONGA

rāngai



TE AHO A MĀUI

Start your career in the screen industry

This one year project-based programme is designed for people who want to gain the skills and knowledge required to work in the screen industry. You will learn how to write a script, produce, direct and edit video and sound whilst working in a team environment mimicking the real world of Screen Production.

The programme has been designed to give you as much “hands-on” experience with professional camera, sound and editing equipment as practical. We primarily use state-of-the-art digital cameras for recording images then edit those images on non-linear digital editing systems, as used in the industry.

Career and Study Opportunities

You will gain a broad introduction, as well as secure a good understanding, of different aspects of the screen industry. This will prepare you for employment or enable you to go on to further study in the Bachelor of Creative Practice in Screen Production.

The depth of the course allows you to look at opportunities working in film, television, web and non-broadcast media.

We aim to give you the skills to build your career in the area of your choice whether that be camera, sound, editing, directing, script writing, producing or another specialised field.

Further your study pathway with the Bachelor of Creative Practice followed by postgraduate study.

Timetable

Your study time will be made up of contact time (class times, tutorials, industry-based learning) and non-contact time (your own individual-directed time).

Contact Time

On campus classes are usually scheduled between 9.00am-3.00pm, Monday to Thursday, which equates to approximately 20 hours per week.


Non-contact Time

You should plan to spend 17.5 hours per week on self-directed study.




NZ Diploma in Screen Production

Level 5, 120 credits

 IDEASchool Hawke's Bay and Rāngai Film Studio Tairāwhiti

 Full-time: 1 year

 Fee: Visit fees.eit.ac.nz to see the fees for this programme

Entry Requirements

The academic entry requirement for the NZ Diploma in Screen Production is either:

- University Entrance, as defined by the NZQA; or
- Evidence regarded as sufficient by the Discipline Leader of the capability to undertake and complete the programme of study; or
- At the discretion of EIT, where the applicant is over 20 years of age and demonstrates the capability to undertake and complete the programme of study.

All applicants will be required to attend an interview with the Discipline Leader.

English Language Entry Requirements

All applicants must demonstrate an acceptable level of English language fluency prior to acceptance in the programme.

For international applicants, ways in which English language fluency may be demonstrated include the following:

- Successful study of a programme in which English was the language of instruction (subject to the conditions in the EIT Database for English Language Proficiency (DELP)).
- Completion of a New Zealand Certificate in English Language (Level 4 with any endorsement).
- IELTS Academic score of 6, with no band score lower than 5.5, achieved in a single test within the two years preceding enrolment.
- Accepted international equivalents to the above IELTS scores, achieved in a single test within the two years preceding enrolment (see equivalency tables in the DELP).

Entry with Credit

For information and enquiries about Recognition of Prior Learning and Cross Credit please contact Svetlana Eliason, Discipline Leader, on 06 830 1183 or seliason@eit.ac.nz.

Assessments

Each course will be assessed for the required NZQA graduate outcomes so that you will have fulfilled all these by the completion of all courses.

Facilities

At IDEASchool's Screen Production facilities in Hawke's Bay there are two working studios complete with broadcast standard cameras, studio quality lighting and professional sound equipment, editing systems, a green screen and a surround-sound theatre. Each student has their own Apple iMac work space.

2025 Key Dates

Programme Starts Monday, 17 February

Programme Ends Friday, 28 November

Semester Breaks
14 - 25 April
30 June - 18 July
22 September - 3 October

At IDEASchool's Screen Production in Tairāwhiti, EIT has partnered with Rāngai to deliver the NZ Diploma in Screen Production from state of the art studios in the heart of Gisborne, complimented by on campus facilities at EIT.

Year 13 Scholarship

Our Year 13 Scholarship supports school leavers across the Hawke's Bay region to study any one of our degrees or selected diploma programmes that lead into a degree by providing one year FREE* study.

Live outside these regions? No problem, there are some programmes that are available for applications from Year 13 students nationwide, so if you are Year 13 and want to study one of these, you can apply for this scholarship too.

The Year 13 Scholarship covers one year of tuition fees including any course related costs which have been approved to be included as part of the scholarship. When combined with the Government Fees Free initiative, some Year 13 Scholarship recipients are studying fees free for two years of their degree.

For full information about the Year 13 Scholarship check out year13.eit.ac.nz or email yr13@eit.ac.nz.

** Conditions apply.*

The experience you need & the support to succeed

When you study at EIT you'll get the kind of experiences that will help you gain the knowledge and skills to get ahead.

You'll also be supported by lecturers and tutors who are here for you, within a learning environment where you are treated as an individual, not just a number.

They'll know your name and you'll receive one-on-one attention to make sure you get the support to succeed.



Experienced Lecturers

At EIT, you can be confident in the quality of our teaching and your learning experience.

EIT is highly regarded in New Zealand for research excellence due to the quality of our community centred research, our publications and our external grant income provided by funding institutions who have confidence in our research capability. You can be confident your lecturers use the latest knowledge and research in their field of expertise to inform their teaching, and many are at the forefront of knowledge creation within their discipline area.

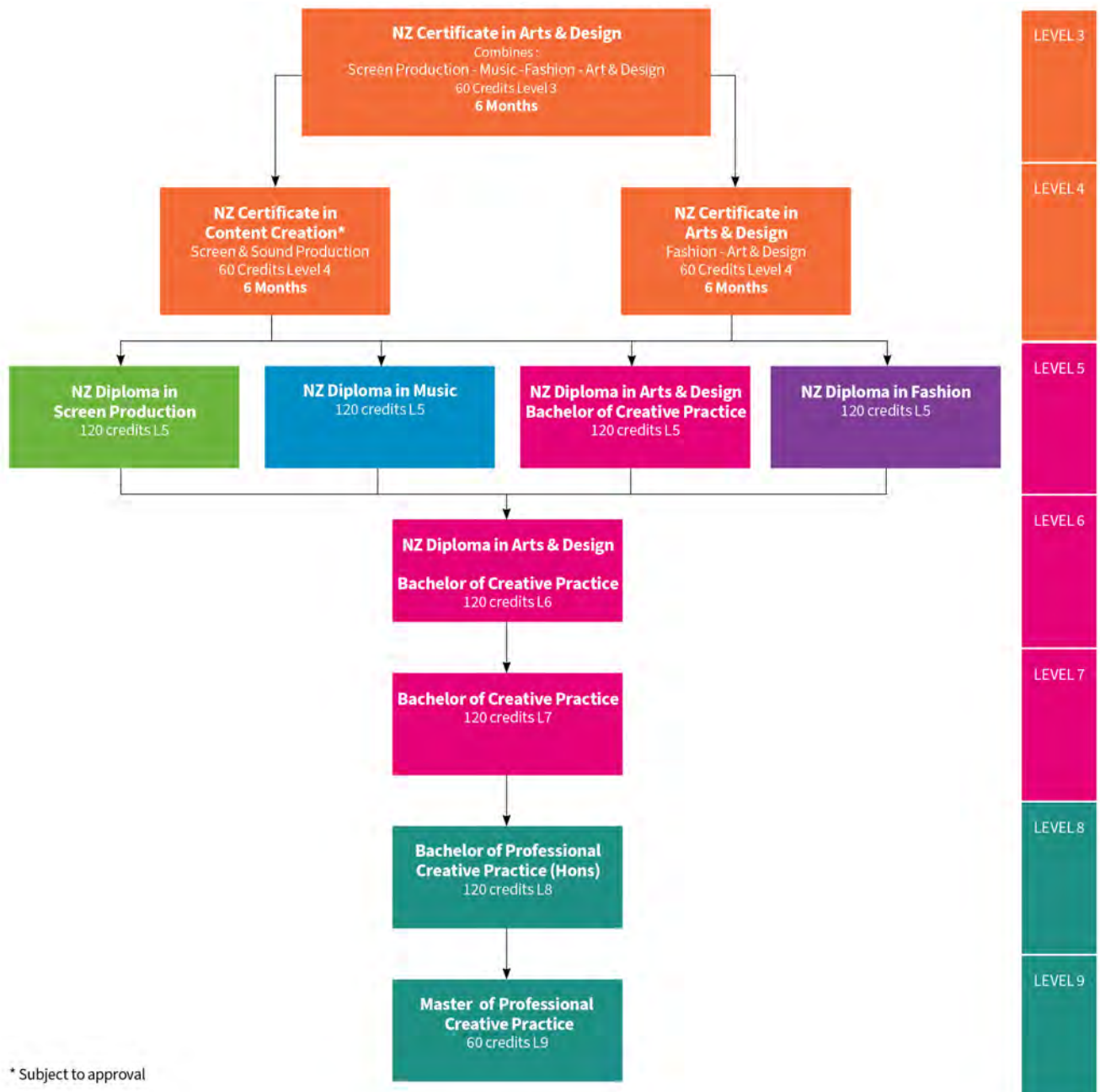
We value our partnership with students and aim to provide quality education in a supportive environment, encouraging personal growth and professional development. Students will be encouraged to assist in local screen productions as opportunities arise.

Name	Creative Background
Svetlana Eliason <i>Fellow of the HEA, MMus (Popular Music Performance), PGCertTchg&Lning Hawke's Bay Discipline Leader</i>	Svetlana relocated to Hawke's Bay from the UK, where she was a Course Leader of the BMus Popular Music Performance programme at BIMM London. Svetlana is a professional musician and educator with over 20 years experience in performance and tertiary education. As a touring bass player for Moby, Svetlana travelled around the planet several times; her personal highlight being Moby's Glastonbury 2003 Pyramid Stage headline.
Floyd Pepper <i>NZDipScreenProd, NZCertContMusic Hawke's Bay Lecturer</i>	Floyd has worked in the audio visual realm across NZ and Canada, freelancing as a videographer, photographer and music producer. Outside of the classroom Floyd operates local business 'Pepper Productions' while also releasing and performing music under the alias 'CASHEK'.
Sally Williams <i>BSc (Biology), PGDip Natural History Filmmaking & Science Communication Hawke's Bay Lecturer</i>	Sally has worked in the screen industry nationally and internationally for 20 years. Sally is a director and producer for broadcast documentaries and has made films on a range of subject matter from orphaned orangutans to natural disasters to the lives of artists.
Wayne Dobson <i>EST DipAdEd Hawke's Bay Lecturer & Technician</i>	Wayne is both a tutor and a technician with over 30 years experience in the Screen industry. He still runs his own business providing crew and equipment, producing content and editing projects for local and international clients.
Gianluca Castaldo <i>MLD, Adobe Expert Hawke's Bay Lecturer</i>	Luca has over 10 years experience in the screen industry both in NZ and overseas working in lighting, camera and post production. He spent several years lecturing at a Film School in Milan before moving to New Zealand.
Jacqui Knight <i>PhD, MA (Fine Art Media) UCL, BA (Fine Art), PGCE Rāngai Education Lead</i>	Originally, from an experimental film background, Jacqui draws on 18 years of curriculum design and lecturing across various institutions including in Amsterdam, USA, and the UK. Her doctorate in Philosophy of Digital Media and Technology addresses the material, ethical and political concerns facing emerging imaging technologies that decentralise the human operator. In recent years she has developed a portfolio of design and innovation projects using VR, simulation and imaging technologies.
Nigel Thornicroft <i>BBCom (Film & TV Production) Rāngai Lecturer</i>	Nigel has over 20 years of experience in television and film production. His journey began as a camera operator, where he not only honed his craft but also developed a passions for sharing his knowledge with others. Throughout his career, he has worked across various broadcasters and genres, including sports coverage, documentaries, music videos and feature films.
Lochlan Packman <i>BA (Film & Media Studies - double major) Rāngai Tutor</i>	Since completing his Film and Media Studies degree five years ago Lochlan has been involved in content creation and screen production, working on various advertising, documentary and live TV productions.
Irina Konig	Programme Administrator

Course Descriptions

Course No.	Brief Description	NZQA Level	No. of Credits
DSPEP1	EPISODE ONE: In the Beginning Students familiarize themselves with professional camera, sound, lighting and editing equipment.	5	30
DSPEP2	EPISODE TWO: Once Upon a Time Students are introduced to script writing and story boarding. They write and produce their own project.	5	30
DSPEP3	EPISODE THREE: Is That a Fact? Students learn to research, write, interview and prepare and produce a mini documentary	5	30
DSPEP4	EPISODE FOUR: The Big Reveal Students bring together the different skills they have learnt through the year to work on new media projects and a live studio production.	5	30

Programme Pathway



How to Enrol

There is an easy 3-step process to follow when enrolling at EIT.

Step 1

Check out eit.ac.nz to see the programmes available for you to study. A copy of the course information for each programme is available on our website.

Step 2

You can now use your RealMe verified identity to apply for study at EIT. If you use your RealMe verified identity you will no longer be sent a copy of your application form to sign. You also will not need to provide us with a copy of your primary ID.

If you apply online without using RealMe then you will be sent a summary of your enrolment to check and sign. It will also include course selection forms which you need to complete and return. Your enrolment cannot progress until you have sent the summary and forms back to us.

You can also apply using a paper enrolment form. Please call us on 0800 22 55 348 and we will send you one.

You will receive an acceptance letter from your Faculty with programme information. This will include the start date of your study and any special information regarding your programme. Depending on your chosen programme of study, you may be invited to attend an interview before you are accepted.

Step 3

Arrangement for full payment of enrolment fees must be made before the start of your programme. You will receive an invoice with payment details.

Fees Free Government Scheme: Tertiary education is fees-free for eligible domestic tertiary students. To check if you are eligible, go to FeesFree.govt.nz and enter your National Student Number (NSN). If you are not eligible you will be responsible for paying your fees.

Scholarships and Grants: Scholarships and grants make life easier by helping to cover your fees, other costs and living expenses while you study. You don't always need to be an academic high-flyer to qualify. You can find out more about scholarships and other options for paying your fees at eit.ac.nz.

StudyLink: If you need to pay for your own study you can choose to apply for your Student Loan and Student Allowance with StudyLink. You should do this early, even if you haven't yet been accepted on your programme. You can change your details later if anything changes. Visit studylink.govt.nz to find out more about StudyLink.

Student Services Levy

The student services levy is a compulsory non-tuition fee that is charged to students enrolled at EIT. The levy is to contribute to the provision of quality student services that support learning. The funds received by EIT from the levy are ring-fenced, meaning they can only be spent on student services.

Student Loans and Allowances

StudyLink is a service of the Ministry of Social Development. Apply well before your programme begins (even if you haven't been accepted yet) so you'll be ready to get your payments when you need them most.

Check out what you qualify for at studylink.govt.nz.



DISCLAIMER:

All information in this publication pertains to New Zealand Citizens or Permanent Residents, and is correct at the time of printing but is subject to change. EIT is a Business Division of Te Pūkenga – New Zealand Institute of Skills and Technology. EIT reserves the right to amend/withdraw programmes or courses. Fees for 2025 will be set by November 2024 and are subject to change.

For the latest information, or for full programme entry requirements visit eit.ac.nz or phone 0800 22 55 348.