

2025



NZ Diploma in Music

Level 5

If music is your passion then this one year full-time Diploma will help you develop your practical skills in areas such as performance, songwriting and sound production.

Individual and group projects will prepare you for a diverse and exciting career in the music industry.

With your diploma completed successfully you can continue on to the second year of the Bachelor of Creative Practice.

Location	IDEASchool Hawke's Bay
Start	February
Length	One year full-time
Contact	Irina Konig Phone: 06 830 1121 Email: ikonig@eit.ac.nz Svetlana Eliason Phone: 06 830 1183 Email: seliason@eit.ac.nz

IDEASchool
TE KURA AHU TAONGA



TE AHO A MĀUI

Do you want a career in the music industry?

This one year programme uses project based learning. You will study popular music with an emphasis on performance practice and songwriting, as well as using DAWs and live instruments to create, record and release music.

What you will learn:

- The ins and outs of writing music professionally.
- Incorporating Ableton Live and other software into performance.
- Advanced performance and recording methods specific to your instrument.
- Multi-tracking and live recording in a professional studio environment.
- Audio engineering and editing in Pro Tools and other software.
- Writing and arranging music for small to large bands.
- Finding out which funding bodies apply to you and creating usable grant/scholarship applications.
- Utilising social media and other online platforms to boost your professional profile and market your events.
- Collaboration with Screen Production, Fashion, Visual Arts and Design students.

Career and Study Opportunities

You will gain a broad introduction and understanding of the different aspects of the industry which will prepare you for employment or to go on to further study at diploma or degree level. Possible jobs and career opportunities can include:

- Performing artist
- Music producer
- Songwriter or composer
- Session musician
- Specialist instrument tutor
- Assistant recording engineer
- Assistant performance engineer


Continue your study pathway with the Bachelor of Creative Practice followed by the Bachelor of Professional Creative Practice (Honours) degree or a Masters degree.



NZ Diploma in Music Level 5, 120 credits

 IDEASchool Hawke's Bay

 Full-time: 1 year

 Fee: Visit fees.eit.ac.nz to see the fees for this programme

Timetable

Your study time will be made up of contact time (class times, tutorials, industry-based learning) and non-contact time (your own self-directed study).

Contact Time

On campus classes are usually scheduled between 9.00am-3.00pm, Monday to Friday which equates to approximately 20 hours per week.

Non-contact Time

You should plan to spend 17.5 hours per week on self-directed study.

Entry Requirements

The academic entry requirement for the NZ Diploma in Music is either:

- University Entrance, as defined by the NZQA; or
- Evidence regarded as sufficient by the Discipline Leader of the capability to undertake and complete the programme of study; or
- At the discretion of EIT, where the applicant is over 20 years of age and demonstrates the capability to undertake and complete the programme of study.

All applicants will be required to attend an interview/audition with Discipline Leader. Applicants must be able to play a musical instrument and/or sing confidently in front of others. Applicants who have experience with music-making software will also be considered.

English Language Entry Requirements

All applicants must demonstrate an acceptable level of English language fluency prior to acceptance in the programme.

For international applicants, ways in which English language fluency may be demonstrated include the following:

- Successful study of a programme in which English was the language of instruction (subject to the conditions in the EIT Database for English Language Proficiency (DELP)).
- Completion of a New Zealand Certificate in English Language (Level 4 with any endorsement).
- IELTS Academic score of 6, with no band score lower than 5.5, achieved in a single test within the two years preceding enrolment.
- Accepted international equivalents to the above IELTS scores, achieved in a single test within the two years preceding enrolment (see equivalency tables in the DELP).

2025 Key Dates

Programme Starts Monday, 17 February

Programme Ends Friday, 28 November

Semester Breaks 14 - 25 April
30 June - 18 July
22 September - 3 October

Entry with Credit

For information and enquiries about Recognition of Prior Learning and Cross Credit please contact Svetlana Eliason, Discipline Leader, on 06 830 1183, seliason@eit.ac.nz.

Assessments

Each course will be assessed for the required NZQA graduate outcomes so that you will have fulfilled all these by the completion of all courses.

Facilities

IDEASchool's music department offers two rehearsal rooms which can be converted into live recording studios. Each rehearsal room has backline equipment including drum kit, piano/keyboards, bass and guitar amps and a full PA system. Also available is an acoustically treated recording space that houses a 32-channel Audient mixing desk, allowing students to record and mix at a professional level. Students will have access to a range of microphones and hardware as well industry standard recording software, such as Pro Tools and Ableton Live.

Year 13 Scholarship

Our Year 13 Scholarship supports school leavers across the Hawke's Bay region to study any one of our degrees or selected diploma programmes that lead into a degree by providing one year FREE* study.

Live outside these regions? No problem, there are some programmes that are available for applications from Year 13 students nationwide, so if you are Year 13 and want to study one of these, you can apply for this scholarship too.

The Year 13 Scholarship covers one year of tuition fees including any course related costs which have been approved to be included as part of the scholarship. When combined with the Government Fees Free initiative, some Year 13 Scholarship recipients are studying fees free for two years of their degree.

For full information about the Year 13 Scholarship check out year13.eit.ac.nz or email yr13@eit.ac.nz.

* Conditions apply.

The experience you need & the support to succeed

When you study at EIT you'll get the kind of experiences that will help you gain the knowledge and skills to get ahead.

You'll also be supported by lecturers and tutors who are here for you, within a learning environment where you are treated as an individual, not just a number.

They'll know your name and you'll receive one-on-one attention to make sure you get the support to succeed.

Experienced Lecturers

At EIT, you can be confident in the quality of our teaching and your learning experience.

EIT is highly regarded in New Zealand for research excellence due to the quality of our community centred research, our publications and our external grant income provided by funding institutions who have confidence in our research capability. You can be confident your lecturers use the latest knowledge and research in their field of expertise to inform their teaching, and many are at the forefront of knowledge creation within their discipline area.

We value our partnership with students and aim to provide quality education in a supportive environment, encouraging personal growth and professional development. Students will be encouraged to assist in local music productions as opportunities arise.

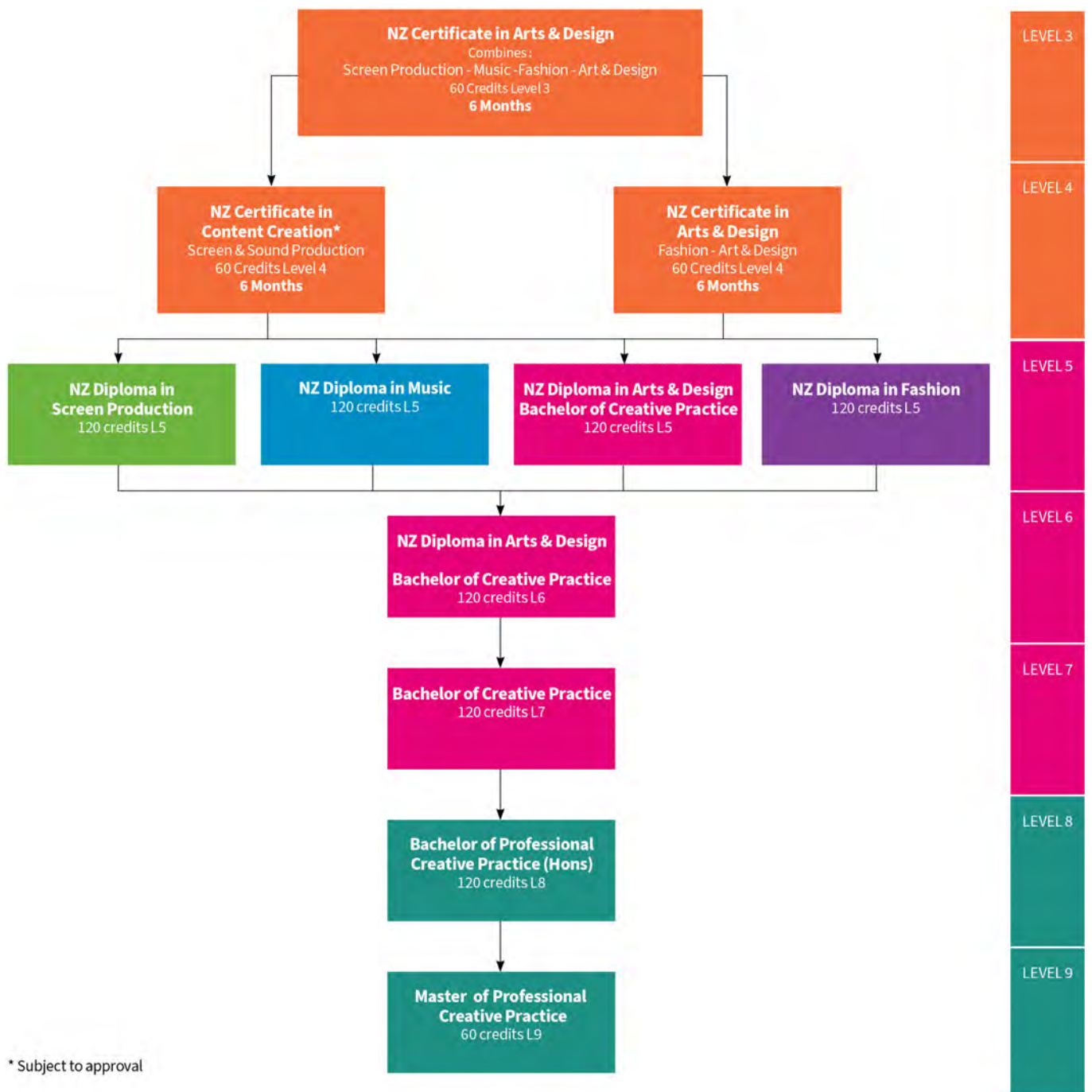
Name	Creative Background
Svetlana Eliason <i>Fellow of the HEA, MMus (Popular Music Performance), PGCertTchg&Lning</i> <i>Discipline Leader</i> seliason@eit.ac.nz	Svetlana relocated to Hawke's Bay from the UK in 2022 where she was a Course Leader of the BMus Popular Music Performance programme at BIMM London. Svetlana is a professional musician and educator with over 20 years experience in performance and tertiary education. As a touring bass player for Moby, Svetlana travelled around the planet several times; her personal highlight being Moby's Glastonbury 2003 Pyramid Stage headline.
Christopher Beernink <i>MMus, BMus (Hons)</i> <i>Lecturer</i>	Chris' teaching practice has a focus on music technology, guitar and bass. He is also an active composer in the jazz and extreme metal spheres. Chris is a member of the Royal New Zealand Air Force Band, playing both double and electric bass in the main concert band and jazz orchestra. He also plays electric guitar for the RNZAF's covers band which plays in various styles including funk, rock and jazz.
Melissa Toy <i>MSc (Psychology) (Distinction), BA (1st Class Hons), Creative Musicianship (Vocals)</i> <i>Lecturer</i>	Mel is a singer, songwriter and vocal coach specialising in contemporary commercial music. In addition to her work with EIT she runs a private vocal coaching practice, lectures for the Voice Study Centre (specialising in performance anxiety/psychology/research methods) and works alongside the multidisciplinary voice rehabilitation team at the Voice Care Centre (London, UK) providing voice and performance rehabilitation sessions to help performers regain confidence and vocal function post-vocal injury. Mel is a specialist in Performance Psychology, and is invested in developing strategies to help performers overcome challenges relating to well-being and performance anxiety.
Ethan Haswell <i>MPCP, BCP</i> <i>Lecturer and Music Technician</i>	Ethan has been active in the Hawke's Bay music scene for the past eight years, performing with various Rock and Metal tribute acts as well as composing and performing with his own original bands spanning from Metal and Punk to Folk and Lo-fi. He regularly performs at venues around the country and is an advocate for a DIY approach to music.
Part-time and guest lecturers	Winston Pitt (vocals) and Chris Smith (drums) are visiting part-time tutors. Workshops and presentations by guest lecturers and industry specialists are arranged during the year.
Irina Konig	Programme Administrator

Course Descriptions

Course No.	Brief Description	NZQA Level	No. of Credits
	Career Plan		
DM5.50	This project develops the knowledge and skills required to explore options for an individual career plan in the music industry.	5	15
	Covers Performance		
DM5.60	This project allows the students to develop the knowledge and skills to produce and deliver a high quality performance of multi-genre cover material. The performance will be staged in front of a live audience and demands a high level of stagecraft.	5	15
	Single Release		
DM5.10	This project is an introduction to composition and sound production. Through the use of DAWs, the students will develop the basic knowledge and skills required to record and release a piece of music.	5	15
	Studio Performance		
DM5.40	Through the production of this performance, students will develop the knowledge and skills required to collaboratively create, coordinate and mix a complete studio performance using advanced recording techniques.	5	15

Course No.	Brief Description	NZQA Level	No. of Credits
	Transcription		
DM5.30	By completing this project, the students will develop the advanced technical skills required to create notated music scores using music notation software and act as a producer during a live recording session of their transcription.	5	15
	EP Package		
DM5.80	The EP Package project extends the skills learned in DM5.10 as each student produces an EP of original music, containing both sequenced and live recorded audio.	5	30
	Original Performance		
DM5.90	By completing this project, students will develop the knowledge and skills to (i) analyse their own and others' compositions and (ii) collaboratively produce and deliver a high-quality performance of original material in collaboration with other musicians.	5	15

Programme Pathway



How to Enrol

There is an easy 3-step process to follow when enrolling at EIT.

Step 1

Check out eit.ac.nz to see the programmes available for you to study. A copy of the course information for each programme is available on our website.

Step 2

You can now use your RealMe verified identity to apply for study at EIT. If you use your RealMe verified identity you will no longer be sent a copy of your application form to sign. You also will not need to provide us with a copy of your primary ID.

If you apply online without using RealMe then you will be sent a summary of your enrolment to check and sign. It will also include course selection forms which you need to complete and return. Your enrolment cannot progress until you have sent the summary and forms back to us.

You can also apply using a paper enrolment form. Please call us on 0800 22 55 348 and we will send you one.

You will receive an acceptance letter from your Faculty with programme information. This will include the start date of your study and any special information regarding your programme. Depending on your chosen programme of study, you may be invited to attend an interview before you are accepted.

Step 3

Arrangement for full payment of enrolment fees must be made before the start of your programme. You will receive an invoice with payment details.

Fees Free Government Scheme: Tertiary education is fees-free for eligible domestic tertiary students. To check if you are eligible, go to FeesFree.govt.nz and enter your National Student Number (NSN). If you are not eligible you will be responsible for paying your fees.

Scholarships and Grants: Scholarships and grants make life easier by helping to cover your fees, other costs and living expenses while you study. You don't always need to be an academic high-flyer to qualify. You can find out more about scholarships and other options for paying your fees at eit.ac.nz.

StudyLink: If you need to pay for your own study you can choose to apply for your Student Loan and Student Allowance with StudyLink. You should do this early, even if you haven't yet been accepted on your programme. You can change your details later if anything changes. Visit studylink.govt.nz to find out more about StudyLink.

Student Services Levy

The student services levy is a compulsory non-tuition fee that is charged to students enrolled at EIT. The levy is to contribute to the provision of quality student services that support learning. The funds received by EIT from the levy are ring-fenced, meaning they can only be spent on student services.

Student Loans and Allowances

StudyLink is a service of the Ministry of Social Development. Apply well before your programme begins (even if you haven't been accepted yet) so you'll be ready to get your payments when you need them most.

Check out what you qualify for at studylink.govt.nz.



DISCLAIMER:

All information in this publication pertains to New Zealand Citizens or Permanent Residents, and is correct at the time of printing but is subject to change. EIT is a Business Division of Te Pūkenga – New Zealand Institute of Skills and Technology. EIT reserves the right to amend/withdraw programmes or courses. Fees for 2025 will be set by November 2024 and are subject to change.

For the latest information, or for full programme entry requirements visit eit.ac.nz or phone 0800 22 55 348.