



# NZ Diploma in Arts and Design

## Level 5

Through engaging in a series of real world and in-house projects, utilising various creative disciplines including paint, sculpture, print, photography, graphic design and 3D design, you will obtain the skills, knowledge and attributes needed to think creatively and develop a career as a practicing creative.

With your diploma completed successfully you can continue on to the second year of the Bachelor of Creative Practice.

**Location** IDEASchool Hawke's Bay  
**Start** February  
**Length** One year full-time  
**Contact** Irina Konig  
 Phone: 06 830 5021  
 Email: [ikonig@eit.ac.nz](mailto:ikonig@eit.ac.nz)

IDEASchool  
 TE KURA AHU TAONGA



TE AHO A MĀUI



Te Pūkenga

# Develop your career in the creative industries

The project-based learning approach in the diploma places you at the centre of the learning experience and allows for the embedding of theory and practice within the project context. The aim of project-based learning is to facilitate your development of knowledge, creative skills and research skills by beginning the learning journey on any given topic with questions, problems or provocations to be addressed or resolved.

There are four projects at Level 5. These projects are largely prescribed, involve both individual and group learning and include the key foundational creative skills, techniques and theory.

## As a graduate of this qualification you will be able to:

- Produce practice-based creative works from a critically engaged personal standpoint informed by contemporary and historic contexts.
- Apply broad knowledge and practical and conceptual skills in the production of arts, craft and/or design work.
- Use investigative tools with creative processes, methods and technologies to develop responses to a brief and solve problems.
- Use research to support the development of ideas and to inform own work within conventions and contexts in arts, craft and/or design.
- Critique own work and the work of others, communicate in a range of situations and present own resolved work in simulated contexts.
- Apply professional practices to manage projects/briefs within defined guidelines and select potential education and employment pathways in arts, crafts and/or design.

## Subject areas include:

- Drawing technology
- Graphic Design: Adobe Creative Suite industry standard software including Photoshop, Illustrator, InDesign, Premiere, After-Effects (dependent on projects)
- 3D Design / Sculpture: wood, clay, metal, plastics
- Spatial, object and architectural design
- Print: silkscreen and press printing
- Paint: acrylics, oils, new media

## Career and study opportunities

Possible jobs and career opportunities can include:

- Painter
- Printmaker
- Sculptor

- Illustrator
- Spatial / interior designer
- Furniture design intern
- Graphic design intern
- Web design intern
- Arts administrator
- Gallery or museum curator intern

Continue your study pathway with a Bachelor of Creative Practice followed by an Honours or Masters degree.

## Timetable

Your study time will be made up of contact time (class times, tutorials) and non-contact time (your own self-directed time).

## Contact time

On-campus classes are usually scheduled between 9.00am-3.00pm, Monday to Friday which equates to approximately 20 hours per week in class.

## Non-contact time

You should plan to spend 17.5 hours per week on self-directed time.



## NZ Diploma in Arts and Design Level 5, 120 credits



Hawke's Bay



Full-time: 1 year



Fee: Visit [fees.eit.ac.nz](https://fees.eit.ac.nz) to see the fees for this programme

### Entry requirements

The academic entry requirement for the NZ Diploma in Arts and Design (Level 5) is either:

- University Entrance, as defined by the NZQA; or
- Evidence regarded as sufficient by the Discipline Leader of the capability to undertake and complete the programme of study; or
- At the discretion of EIT | Te Pūkenga, where the applicant is over 20 years of age and demonstrates the capability to undertake and complete the programme of study.

All applicants are required to attend an interview (and may bring whānau support).

Applicants must provide a hand-written letter of application and a portfolio of work that represents their level of achievement at the interview.

### English language entry requirements

All applicants must demonstrate an acceptable level of English language fluency prior to acceptance in the programme.

For international applicants, ways in which English language fluency may be demonstrated include the following:

- Successful study of a programme in which English was the language of instruction (subject to the conditions in the EIT | Te Pūkenga Database for English Language Proficiency (DELP)).
- Completion of a New Zealand Certificate in English Language (Level 4 with any endorsement).
- IELTS Academic score of 6, with no band score lower than 5.5, achieved in a single test within the two years preceding enrolment.
- Accepted international equivalents to the above IELTS scores, achieved in a single test within the two years preceding enrolment (see equivalency tables in the DELP).

### Entry with credit

For information and enquiries about Recognition of Prior Learning and Cross Credit please contact Nigel Roberts, Programme Coordinator, on 06 830 1155, [nroberts@eit.ac.nz](mailto:nroberts@eit.ac.nz).

### Assessments

Each course will be assessed for the required NZQA graduate outcomes so that you will have fulfilled all these by the completion of all courses.



### 2024 Key dates

**Programme starts** Monday, 19 February

**Programme ends** Friday, 29 November

**Semester breaks** 15-26 April  
1-19 July  
23 September-4 October

### Facilities

IDEAschool has comprehensive media workshops including 2D and 3D sculpture/design areas in clay/metal/wood, extensive press and silkscreen printing facilities, purpose built computer labs with laser and 3D printing, CAD controlled CNC, digital printer/cutter and intron outputs, fashion garment assembly workrooms, music recording, digital production and practice spaces, screen production set building spaces, green screen and digital post production labs.

### Year 13 scholarship

EIT | Te Pūkenga offers a limited number of Year 13 Scholarships to eligible Taupō, Hawke's Bay and Tairāwhiti (Gisborne) learners who are beginning an undergraduate degree in 2024. You can study any one of our 13 degrees or selected level 5 certificate and diploma programmes that pathway into a degree.

If you live outside the Taupō, Hawke's Bay or Tairāwhiti regions there are scholarships available nationwide for a selected few programmes. Go to [scholarships.eit.ac.nz](https://scholarships.eit.ac.nz) to find out which programmes you can apply for.

For full information about the Year 13 Scholarship check out [scholarships.eit.ac.nz](https://scholarships.eit.ac.nz), email [scholarships@eit.ac.nz](mailto:scholarships@eit.ac.nz) or text your name, address and the word YR13 to 4631 and we will send you a Year 13 Scholarship pack.

### EIT is now part of Te Pūkenga

Te Pūkenga brings together New Zealand's Institutes of Technology, Polytechnics, and Industry Training Organisations to build a network of on job, on-campus and online learning. The services we offer not only remain, they are strengthened by being part of the extensive Te Pūkenga network around the country. Your enrolment for study in 2024 will see you enrolling with Te Pūkenga and becoming part of the extensive Te Pūkenga network around the country.

### The experience you need & the support to succeed

When you study at EIT | Te Pūkenga you'll get the kind of experiences that will help you gain the knowledge and skills to get ahead.

You'll also be supported by lecturers and tutors who are here for you, within a learning environment where you are treated as an individual, not just a number.

They'll know your name and you'll receive one-on-one attention to make sure you get the support to succeed.

## Experienced lecturers

At EIT | Te Pūkenga, you can be confident in the quality of our teaching and your learning experience.

EIT | Te Pūkenga is highly regarded in New Zealand for research excellence due to the quality of our community centred research, our publications and our external grant income provided by funding institutions who have confidence in our research capability. You can be confident your lecturers use the latest knowledge and research in their field of expertise to inform their teaching, and many are at the forefront of knowledge creation within their discipline area.

The Programme Coordinator for the NZ Diploma in Arts and Design (Level 5) is Nigel Roberts. Nigel has worked at EIT | Te Pūkenga since 2004. He holds a Bachelor of Visual Arts and Design from EIT | Te Pūkenga and a Master's degree from Elam School of Fine Arts at the University of Auckland. Nigel is a practising artist in his own right and has exhibited locally, nationally and internationally.

The remaining teaching staff bring generalised knowledge of visual arts and design theory and practice, with specialised knowledge in particular media areas.

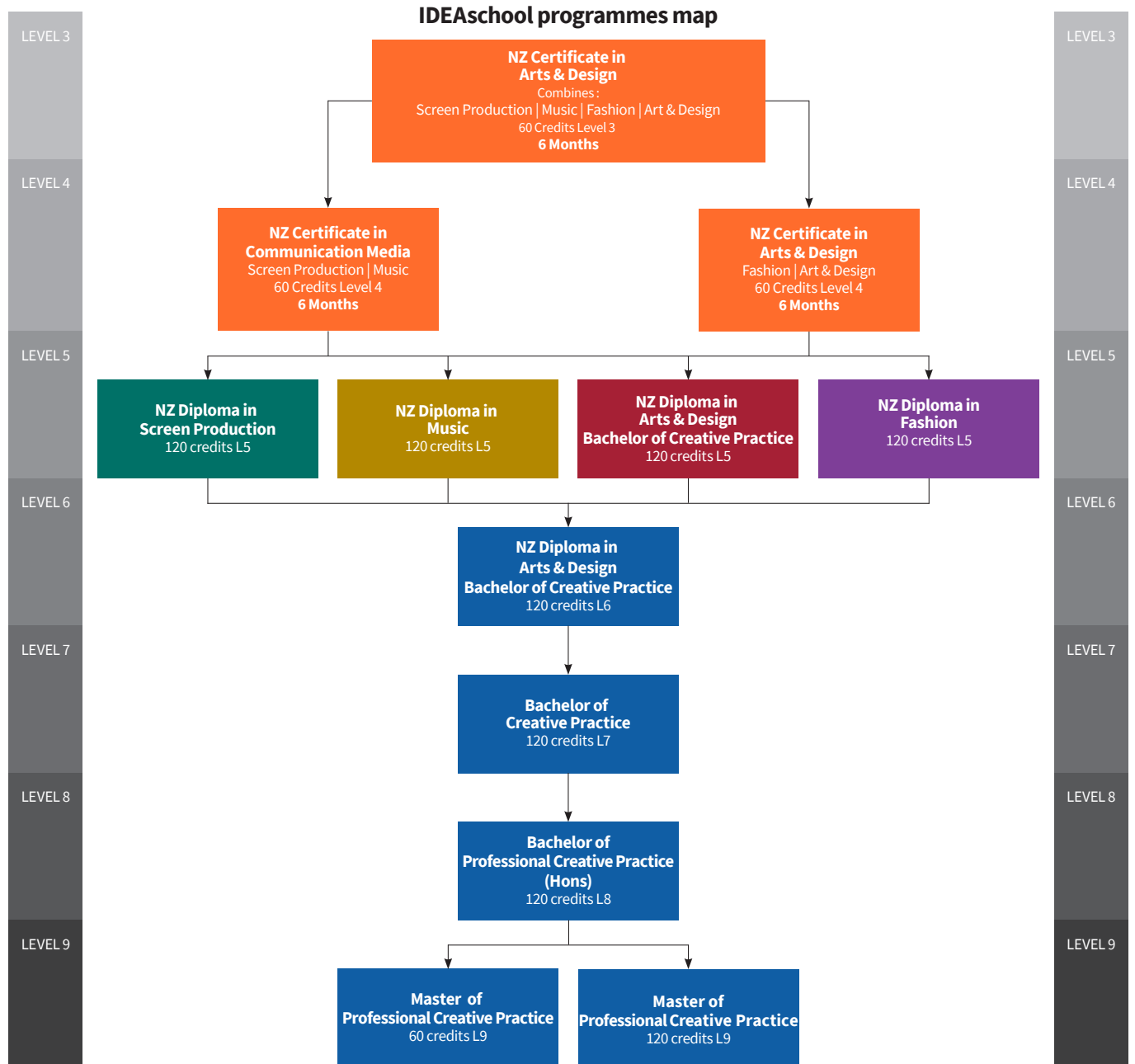
Name	Position	Creative field
<b>Nigel Roberts</b>	<b>Visual Art Discipline Leader</b>	<b>Visual Art / Design</b>
Wellesley Binding	Senior Academic staff member	Visual Art / Painting
Dr Bridget Sutherland	Academic staff member	Visual Art / Art Theory / Design / Moving Image
Paula Taaffe	Academic staff member	Visual Art / Painting / Illustration
Keagan Klempel	Technician	
<b>To be confirmed</b>	<b>Design Discipline Leader</b>	
Dr Mazin Bahho	Senior Academic staff member	Design / Spatial
Anthony Chiappin	Senior Academic staff member	Design / Graphics / Illustration
Roger Kelly	Academic staff member	Design / 3D Design
Beck Wheeler	Academic staff member	Illustration / Visual Art / Design
Diane Wilkie	Academic staff member / Technician	Design / Graphics / Photography
<b>Estelle Booth</b>	Head Technician	Multimedia Designer / Maker
<b>Irina Konig</b>	Programme Administrator	

## Course descriptions

Course no.	Brief description	NZQA level	No. of credits
	<b>Creative Practice Foundations I</b>		
<b>BCP5.001</b>	This project will introduce learners to core knowledge of and skills in visual art and design practice and creative process.	5	30
	<b>Creative Practice Foundations II</b>		
<b>BCP5.002</b>	This project aims to extend learners' core knowledge and skills gained in Creative Practice Foundations I.	5	30
	<b>Studio/Workshop Practice</b>		
<b>BCP5.003</b>	This project aims to consolidate learners' core knowledge of and skills in visual art and design practice and creative practice, requiring them to apply these, as well as professional skills, to address a brief.	5	30
	<b>Managing an Evolving Project</b>		
<b>BCP5.004</b>	This project will support learners in establishing an informed studio/workshop practice, allowing them to further expand their professional skills, as well as their investigation, application and evaluation of creative processes and technologies.	5	30



# Programme pathway



# How to enrol

There is an easy 3-step process to follow when enrolling at EIT | Te Pūkenga.

## Step 1

Check out [eit.ac.nz](http://eit.ac.nz) to see the programmes available for you to study. A copy of the course information for each programme is available on our website.

## Step 2

You can now use your RealMe verified identity to apply for study at EIT | Te Pūkenga. If you use your RealMe verified identity you will no longer be sent a copy of your application form to sign. You also will not need to provide us with a copy of your primary ID.

If you apply online without using RealMe then you will be sent a summary of your enrolment to check and sign. It will also include course selection forms which you need to complete and return. Your enrolment cannot progress until you have sent the summary and forms back to us.

You can also apply using a paper enrolment form. Please call us on **0800 22 55 348** and we will send you one out.

You will receive an acceptance letter from your Faculty with programme information. This will include the start date of your study and any special information regarding your programme. Depending on your chosen programme of study, you may be invited to attend an interview before you are accepted.

## Step 3

Arrangement for full payment of enrolment fees must be made before the start of your programme. You will receive an invoice with payment details.

**Fees-free government scheme:** Tertiary education is fees-free for eligible domestic tertiary students. To check if you are eligible, go to [FeesFree.govt.nz](http://FeesFree.govt.nz) and enter your National Student Number (NSN). If you are not eligible you will be responsible for paying your fees.

**Scholarships and grants:** Scholarships and grants make life easier by helping to cover your fees, other costs and living expenses while you study. You don't always need to be an academic high-flyer to qualify. You can find out more about scholarships and other options for paying your fees at [eit.ac.nz](http://eit.ac.nz).

**StudyLink:** If you need to pay for your own study you can choose to apply for your Student Loan and Student Allowance with StudyLink. You should do this early, even if you haven't yet been accepted on your programme. You can change your details later if anything changes. Visit [studylink.govt.nz](http://studylink.govt.nz) to find out more about StudyLink.

## Student services levy

The student services levy is a compulsory non-tuition fee that is charged to students enrolled at EIT | Te Pūkenga. The levy is to contribute to the provision of quality student services that support learning. The funds received by EIT | Te Pūkenga from the levy are ring-fenced, meaning they can only be spent on student services.

## Student loans and allowances

StudyLink is a service of the Ministry of Social Development. Apply well before your programme begins (even if you haven't been accepted yet) so you'll be ready to get your payments when you need them most.

Check out what you qualify for at [studylink.govt.nz](http://studylink.govt.nz).



Disclaimer: The Eastern Institute of Technology Limited is a business division of Te Pūkenga - New Zealand Institute of Skills and Technology. All information in this publication pertains to New Zealand Citizens or Permanent Residents, and is correct at the time of printing but is subject to change. EIT | Te Pūkenga reserves the right to amend/withdraw programmes or courses. From 2023 programmes may be subject to review as part of the Reform of Vocational Education and Training. As the review is ongoing, this document is correct at the time of publishing but the courses outlined may change over time. For full programme entry requirements visit [eit.ac.nz](http://eit.ac.nz).

