

2024

NZ Certificate in Study and Career Preparation

Level 4

Te Hāpai Hāpori | Social Sciences or Teaching Pathway
Hauora | Nursing/Health Pathway

This is the ideal introduction if you're interested in working in the health, social sciences or education sectors. This programme is for people intending to pursue focused development in the skills, capabilities, knowledge and attributes needed to succeed at level 4 or above.

The courses you choose will get you ready to apply for entry into a range of diploma and degree programmes in the fields of health (including nursing), social work (including mental health support) and teaching.

If you choose not to carry on with study, you will have some broad knowledge and skills to enhance your employment prospects.

Location	Hawke's Bay and Tairāwhiti
Start	February and July*
Length	19 weeks full-time**
Contact	Maree Diamond - Te Hāpai Hāpori pathway Phone: 06 830 1108 Email: mdiamond@eit.ac.nz
	Kenzie Turnbull - Hauora pathway Phone: 06 830 1439 Email: kturnbull@eit.ac.nz

* February intake available in Hawke's Bay only. July intake available in Hawke's Bay and Tairāwhiti.

** Part-time study available.

For NZ Citizens and Permanent Residents



TE AHO A MĀUI



Te Pūkenga

Gain the skills and knowledge to enter degree level study with confidence

This qualification is for people intending to pursue focused development in the skills, capabilities, knowledge and attributes needed to succeed at higher levels including at degree level, within the context of a field of study or employment pathway. There are two study pathway options:

- Te Hāpai Hāpori | Social Sciences or Teaching Pathway, for those wishing to pursue a career in social sciences or teaching.
- Hauora | Nursing/Health Pathway, for those wishing to pursue a career in nursing or other health professions.

You will be prepared for further study in your chosen career pathway and upon graduating with this qualification you will be able to:

- Locate, select and analyse relevant information from a variety of sources and apply to tasks and problems in your area of interest.
- Work independently and collaboratively on academic tasks and problems.
- Construct a reasoned and researched argument, communicated using a range of appropriate media.
- Develop and critique a study and career plan that identifies specific long-term career goals.

Please feel free to contact us by phone, email or private message us on Facebook for a chat about your study options. You can also visit at any time to view our campuses and facilities.

Please note: part-time learners will be strongly advised to complete the core courses before they enrol in any of the elective courses.

Career and study opportunities

Upon completion of this qualification you will have the skills, capabilities, knowledge and attributes needed to succeed at higher levels including at degree level, within the context of a field of study or career pathway. There are three career pathway options:

Te Hāpai Hāpori | Social Sciences Pathway

Bachelor of Social Work or another degree or diploma related to social sciences or working within communities.

Te Hāpai Hāpori | Teaching Pathway

Bachelor of Teaching (Early Childhood Education), Bachelor of Teaching (Primary), or another degree or diploma related to education.


Hauora | Nursing/Health Pathway


Bachelor of Nursing or another degree or diploma related to health.

Please note: Graduates of the NZ Certificate in Study and Career Preparation (Hauora Pathway) Level 4, will need to have achieved 65% or higher in the TWO elective courses for Hauora.



NZ Certificate in Study and Career Preparation Level 4, 60 credits

 Hawke's Bay and Tairāwhiti

 Full-time: 19 weeks
Part-time: equivalent

 Fee:
Visit fees.eit.ac.nz to see the fees for this programme.

Timetable

Your study time will be made up of contact time (class times, tutorials) and non-contact time (your own individual study time).

Contact time

On-campus classes are usually scheduled between 8.00am-5.00pm, Monday to Friday.

For a current timetable, please refer to eit.ac.nz/students/timetable.

Non-contact time

You should plan to spend approximately 10 hours of individual study, per course, per week, including scheduled classroom time.

Full-time study would therefore be equivalent to 40 hours per week.

Entry requirements

- Achievement of NCEA Level 2 with a minimum of 10 credits from literacy-rich subjects; or
- NZ Certificate in Study and Career Preparation (Level 3).
- You may be asked to provide evidence of a level of literacy and numeracy sufficient to:
 - i. be able to study at this level, and
 - ii. interpret and apply health and safety requirements.

Applicants must supply a personal statement about their background, reasons for wanting to undertake the programme, and any factors that could impact on their study.

Applicants must also return the included Course Selection Form.

Computer literacy is highly recommended in order to be able to cope with the digital components of the courses. Learner guidance and further details are provided in the application and enrolment information.

English language entry requirements

All applicants must have a level of English sufficient to be able to study at this level.

Those applicants whose first language is not English should have an International English Language Testing System (IELTS) overall Academic score of at least 5.5 issued within the last two years with no less than 5.0 in any band or equivalent.

2024 Key dates

Intake one Starts: Monday, 19 February
Hawke's Bay only Ends: Thursday, 27 June

Intake two Starts: Monday, 22 July
Ends: Friday, 29 November

Semester breaks 15-26 April
1-19 July
30 September-11 October

Entry with credit

Standard EIT | Te Pūkenga regulations apply (30 credits is the maximum that can be transferred into this programme).

Assessments

The programme includes a wide range of assessments including group activities, online discussions, essays, presentations and reports.

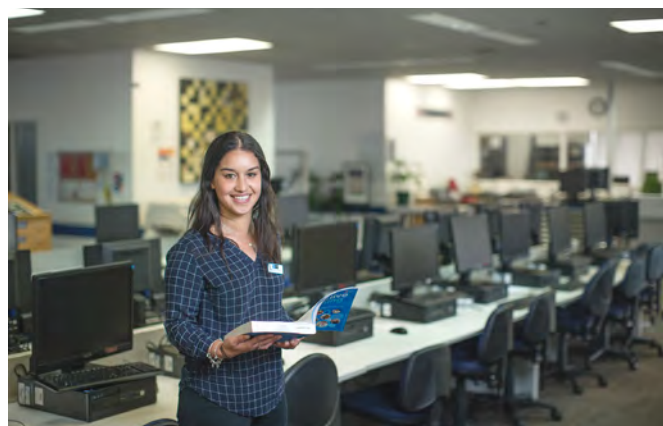
Experienced lecturers

At EIT | Te Pūkenga, you can be confident in the quality of our teaching and your learning experience.

EIT | Te Pūkenga is highly regarded in New Zealand for research excellence due to the quality of our community centred research, our publications and our external grant income provided by funding institutions who have confidence in our research capability. You can be confident your lecturers use the latest knowledge and research in their field of expertise to inform their teaching, and many are at the forefront of knowledge creation within their discipline area.

Our lecturers are highly trained professionals with particular areas of expertise in Social Work, Early Childhood and Primary Education and Nursing. Staff also maintain contacts with other professionals through organisations such as ANZASW (Aotearoa New Zealand Association of Social Workers) and the Nursing Council of New Zealand (NCNZ).

We value our partnership with learners and aim to provide high quality education in a supportive environment, encouraging personal growth and professional development.



EIT is now part of Te Pūkenga

Te Pūkenga brings together New Zealand's Institutes of Technology, Polytechnics, and Industry Training Organisations to build a network of on job, on-campus and online learning.

The services we offer not only remain, they are strengthened by being part of the extensive Te Pūkenga network around the country. Your enrolment for study in 2024 will see you enrolling with Te Pūkenga and becoming part of the extensive Te Pūkenga network around the country.

The experience you need & the support to succeed

When you study at EIT | Te Pūkenga you'll get the kind of experiences that will help you gain the knowledge and skills to get ahead.

You'll also be supported by lecturers and tutors who are here for you, within a learning environment where you are treated as an individual, not just a number.

They'll know your name and you'll receive one-on-one attention to make sure you get the support to succeed.

Programme information

There are two compulsory courses:

- SCP4.10 Skills for Successful Tertiary Study
- SCP4.11 Building Communication Competence

Part-time learners will be advised to study the two compulsory courses first before enrolling in any of the elective courses.

In addition, learners can choose two elective courses where they will further develop skills and knowledge in the context of their special interest areas.

Elective choices may affect the study pathways following completion of the NZ Certificate in Study and Career Preparation (Level 4). The electives for various study pathways are provided in the following table. It is not anticipated that learners will choose electives from more than one context. The selection of the recommended elective courses allows for all the graduate outcomes to be met within a learner's chosen context.

Course descriptions

Course no.	Brief description	NZQA level	No. of credits	Semester offered
Compulsory courses				
SCP4.10	Skills for Successful Tertiary Study To enable learners to develop essential study skills required for higher-level study.	4	15	HB 1 & 2 TC 2
SCP4.11	Building Communication Competence To enable learners to develop oral and written communication skills in a range of contexts.	4	15	HB 1 & 2 TC 2
Elective courses - Te Hāpai Hāpori Social Sciences or Teaching Pathway				
SCP4.12	Introduction to Education and Social Services To introduce learners to the competencies required to work in the education or social sector.	4	15	HB 1 & 2 TC 2
SCP4.13	Social Issues in Aotearoa New Zealand To introduce learners to a range of topical social issues and to explore the relationship between social issues and their effects on the individual.	4	15	HB 1 & 2 TC 2
Elective courses - Hauora Nursing/Health Pathway				
SCP4.14	Understanding the Human Body To develop essential science knowledge and skills for further study in health.	4	15	HB 1 & 2 TC 2
SCP4.15	Applied Science for Health To develop a career plan and the essential science and mathematical knowledge and skills for further study in nursing and health.	4	15	HB 1 & 2 TC 2

How to enrol

There is an easy 3-step process to follow when enrolling at EIT | Te Pūkenga.

Step 1

Check out eit.ac.nz to see the programmes available for you to study. A copy of the course information for each programme is available on our website.

Step 2

You can now use your RealMe verified identity to apply for study at EIT | Te Pūkenga. If you use your RealMe verified identity you will no longer be sent a copy of your application form to sign. You also will not need to provide us with a copy of your primary ID.

If you apply online without using RealMe then you will be sent a summary of your enrolment to check and sign. It will also include course selection forms which you need to complete and return. Your enrolment cannot progress until you have sent the summary and forms back to us.

You can also apply using a paper enrolment form. Please call us on **0800 22 55 348** and we will send you one out.

You will receive an acceptance letter from your Faculty with programme information. This will include the start date of your study and any special information regarding your programme. Depending on your chosen programme of study, you may be invited to attend an interview before you are accepted.

Step 3

Arrangement for full payment of enrolment fees must be made before the start of your programme. You will receive an invoice with payment details.

Fees-free government scheme: Tertiary education is fees-free for eligible domestic tertiary students. To check if you are eligible, go to FeesFree.govt.nz and enter your National Student Number (NSN). If you are not eligible you will be responsible for paying your fees.

Scholarships and grants: Scholarships and grants make life easier by helping to cover your fees, other costs and living expenses while you study. You don't always need to be an academic high-flyer to qualify. You can find out more about scholarships and other options for paying your fees at eit.ac.nz.

StudyLink: If you need to pay for your own study you can choose to apply for your Student Loan and Student Allowance with StudyLink. You should do this early, even if you haven't yet been accepted on your programme. You can change your details later if anything changes. Visit studylink.govt.nz to find out more about StudyLink.

Student services levy

The student services levy is a compulsory non-tuition fee that is charged to students enrolled at EIT | Te Pūkenga. The levy is to contribute to the provision of quality student services that support learning. The funds received by EIT | Te Pūkenga from the levy are ring-fenced, meaning they can only be spent on student services.

Student loans and allowances

StudyLink is a service of the Ministry of Social Development. Apply well before your programme begins (even if you haven't been accepted yet) so you'll be ready to get your payments when you need them most.

Check out what you qualify for at studylink.govt.nz.



Disclaimer: The Eastern Institute of Technology Limited is a business division of Te Pūkenga - New Zealand Institute of Skills and Technology. All information in this publication pertains to New Zealand Citizens or Permanent Residents, and is correct at the time of printing but is subject to change. EIT | Te Pūkenga reserves the right to amend/withdraw programmes or courses. From 2023 programmes may be subject to review as part of the Reform of Vocational Education and Training. As the review is ongoing, this document is correct at the time of publishing but the courses outlined may change over time. For full programme entry requirements visit eit.ac.nz.





NZ Certificate in Study and Career Preparation (Level 4)

Please Note

These forms are to be returned with your completed enrolment form.

Please complete and return the following with your enrolment form:

- Course Selection Form
- Brief Personal Statement



NZ Certificate in Study and Career Preparation (Level 4)

Course Selection Form

This Course Selection Form is part of your application for this programme. Please complete and return with your Brief Personal Statement (please see entry requirements).

Applicant name:

1. Which campus do you wish to enrol at?

Hawke's Bay

Tairāwhiti

2. Which Pathway do you want to follow?

Te Hāpai Hāpori Pathway (Social Sciences or Teaching)

Hauora Pathway (Nursing/Health)

3. Which Semester do you want to enrol in?

Semester One (February start)

This programme is offered in Hawke's Bay only (both pathways).

Semester Two (July start)

This programme is offered in Hawke's Bay and Tairāwhiti (both pathways).

4. What is your preferred study option?

Full-time

Please select two (2) elective courses from your chosen pathway in the table below.

Part-time

The compulsory courses have been selected for you.

5. Course selection - please tick the appropriate boxes.

Tick	Course no	Course title
Compulsory courses for both Pathways		
<input checked="" type="checkbox"/>	SCP4.10	Skills for Successful Tertiary Study
<input checked="" type="checkbox"/>	SCP4.11	Building Communication Competence
Elective courses for Te Hāpai Hāpori Pathway (Social Sciences or Teaching)		
<input type="checkbox"/>	SCP4.12	Introduction to Education and Social Services
<input type="checkbox"/>	SCP4.13	Social Issues in Aotearoa New Zealand
Elective courses for Hauora Pathway (Nursing/Health)		
<input type="checkbox"/>	SCP4.14	Understanding the Human Body
<input type="checkbox"/>	SCP4.15	Applied Science for Health

