

2026



Designer: Joanne Beswick

NZ Certificate in Fashion

Level 4

This project based certificate offers an excellent starting point for a career in the fashion industry or for progressing to further study.

You'll explore a variety of sustainable textiles and develop foundational fashion design skills, while building entry-level abilities in patternmaking and garment construction.

Location	IDEASchool Hawke's Bay
Start	20 July
Length	17 weeks
Contact	ideaschool@eit.ac.nz 0800 22 55 348



IDEASchool
TE KURA AHU TAONGA



TE AHO A MĀUI

For NZ Citizens and Permanent Residents

Step into your career in fashion

During the NZ Certificate in Fashion [Level 4] you will and build entry level skills and knowledge in the area of fashion.

As a graduate of this qualification you will be able to:

- Apply a variety of introductory skills in fashion.
- Apply creative processes and techniques to solve problems in response to a brief.
- Demonstrate introductory work practices in fashion and explore potential education and employment pathways.

What you will learn

- Machine use & garment construction
- Pattern making
- Fashion design & drawing
- Textiles & sustainability
- Research
- Portfolio development

Career and Study Opportunities

You will gain broad introductory knowledge and understanding in a variety of fashion areas.

The NZ Certificate in Fashion [Level 4] can lead you to apply for entry into the Level 5 NZ Diploma in Fashion, or the Bachelor of Creative Practice.

The portfolio content completed during the programme can be used to support an application for further study or look for an entry level job in New Zealand's fashion industries.

Timetable

Your study time will be made up of contact time (class times, tutorials, industry-based learning) and non-contact time (your own individual study time).

For a current timetable, please refer to <https://www.eit.ac.nz/students/timetable/>

Contact Time

On campus classes are usually scheduled between 9.00am-3.00pm, Monday to Thursday.

Non-contact Time

You should plan to spend 17.5 hours per week on self-directed study.

Entry Requirements

To be admitted to this programme, applicants must meet the following admission requirements:

- 40 credits at NCEA Level 1 or above, including 10 Literacy credits and 10 Numeracy credits

OR

- NZ Certificate in Arts and Design (Level 3) [Ref 2626]

OR

- a relevant qualification at NZQF Level 2

OR

- a recognised equivalent

Selection Process

Limits on enrolment may be applied due to health and safety reasons and/or availability of resourcing. Should limits be placed on enrolment, the following selection criteria will apply:

- Applicants will undergo an interview to establish their interest in the fashion industry and provide a portfolio of work if available.




Designer: Ben Roux Hyland



NZ Certificate in Fashion Level 4, 60 credits

 IDEASchool Hawke's Bay

 17 weeks

 Fee: Visit fees.eit.ac.nz to see the fees for this programme

Field trip costs are additional and will be advised during the interview process.

2026 Key Dates

Programme Starts Monday 20 July

Programme Ends Friday, 27 November

Semester Breaks 28 September-9 October

Language Requirements

Applicants for whom English or te reo Māori is not a first language are required to provide proof of English proficiency.

- The required level of proficiency for this programme is IELTS (General) score of 5.5 with no individual band lower than 5 from a single test taken in the preceding two years, or an equivalent described in NZQA Rules.
- Domestic learners who have completed the majority or all of their education in New Zealand are deemed to have met this requirement.

Assessments

A good level of attendance and a willingness to participate and learn are requirements for successful completion of this

programme. You will be assessed on the documentation process in your portfolio and the work you create.

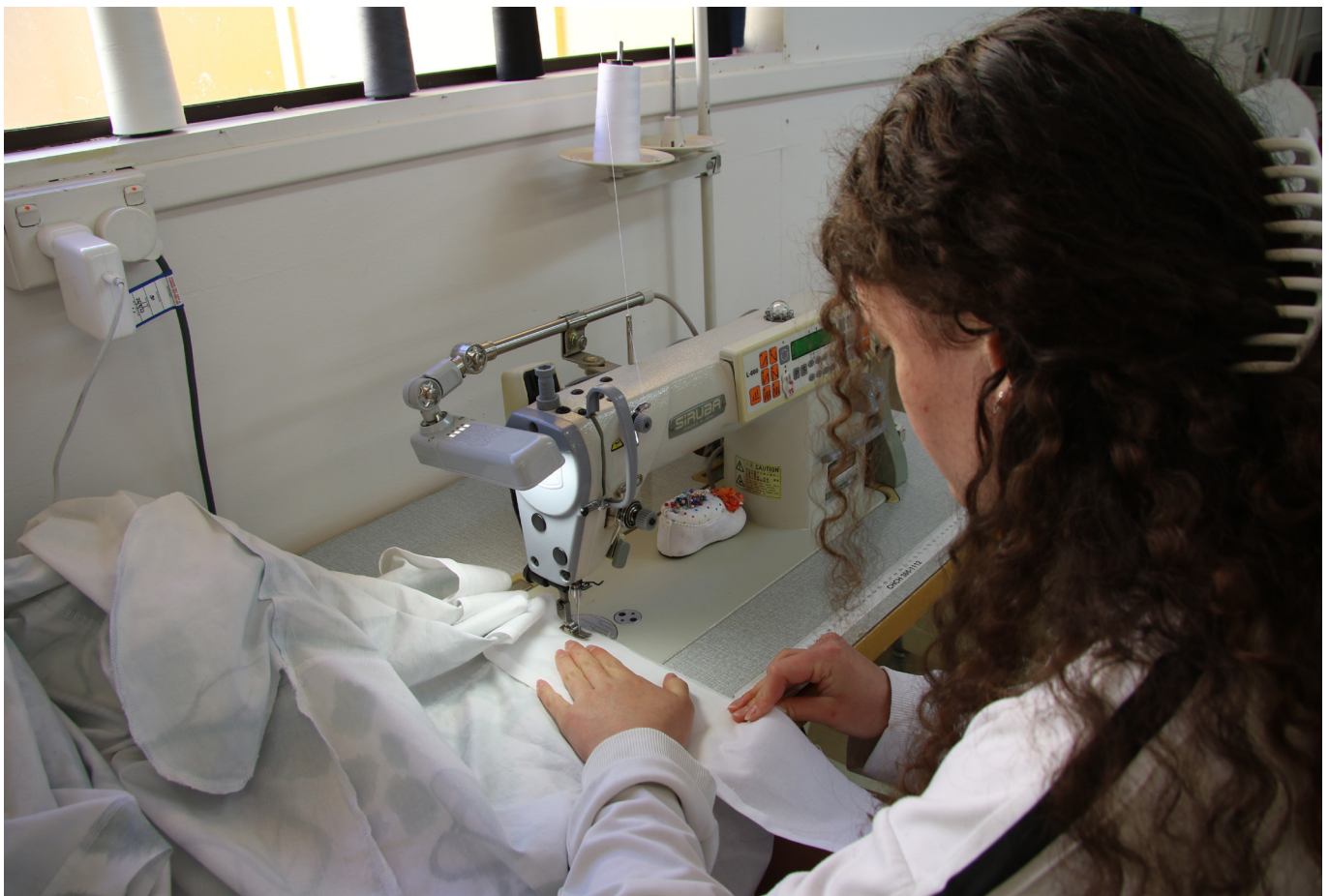
There will be regular assessments of your work with tutor feedback helping you to achieve your goals.

Facilities

IDEASchool's Fashion studios are fully set-up with industrial equipment including design software and hardware, facilities for blog and web-design and sewing and fashion production machinery.

Entry with Credit

For information and enquiries about Recognition of Prior Learning and Cross Credit please contact Programme Lead, on 0800 22 55 348, ideaschool@eit.ac.nz.



Designer: Leah Ngerengere

The experience you need & the support to succeed

When you study at EIT you'll get the kind of experiences that will help you gain the knowledge and skills to get ahead.

You'll also be supported by lecturers and tutors who are here for you, within a learning environment where you are treated as an individual, not just a number.

They'll know your name and you'll receive one-on-one attention to make sure you get the support to succeed.

Experienced Lecturers

At EIT, you can be confident in the quality of our teaching and your learning experience.

EIT is highly regarded in New Zealand for research excellence due to the quality of our community centred research, our publications and our external grant income provided by funding institutions who have confidence in our research capability. You can be confident your lecturers use the latest knowledge and research in their field of expertise to inform their teaching, and many are at the forefront of knowledge creation within their discipline area.

Our fashion lecturers are highly trained professionals with particular areas of expertise in design, construction, pattern drafting, fashion illustration, electronic media development, industrial production methods and adult education and training. Staff also maintain contacts local industry, community and with other professionals through organisations such as Mindful Fashion NZ.

The remaining teaching staff bring generalised knowledge of visual arts and design theory and practice, with specialised knowledge in particular media areas. A list of current staff members is outlined below.

Name	Position	Expertise
Christina Rhodes <i>CALT</i>	Tutor	Fashion / Health and Safety / Garment Construction / Machine Skills / Sustainability / History of Fashion
Zana Price <i>BA Fashion</i>	Tutor	Fashion Design / Fashion Illustration / Pattern Making / Research

Course Descriptions

Course No.	Brief Description	NZQA Level	No. of Credits	Semester/ Term offered
NZCF4.001	The Fashion Studio 1 The aim of this course is for ākonga to develop foundation knowledge and skills for the fashion industry.	4	15	S2
NZCF4.002	The Fashion Studio 2 The aim of this course is for ākonga to develop basic fashion technical skills to industry standards.	4	15	S2
NZCF4.003	Past and Present The aim of this course is for ākonga to complete a contemporary design project influenced by historical fashion.	4	15	S2
NZCF4.004	Design to Completion The aim of this course is for ākonga to produce and present a fashion outfit.	4	15	S2

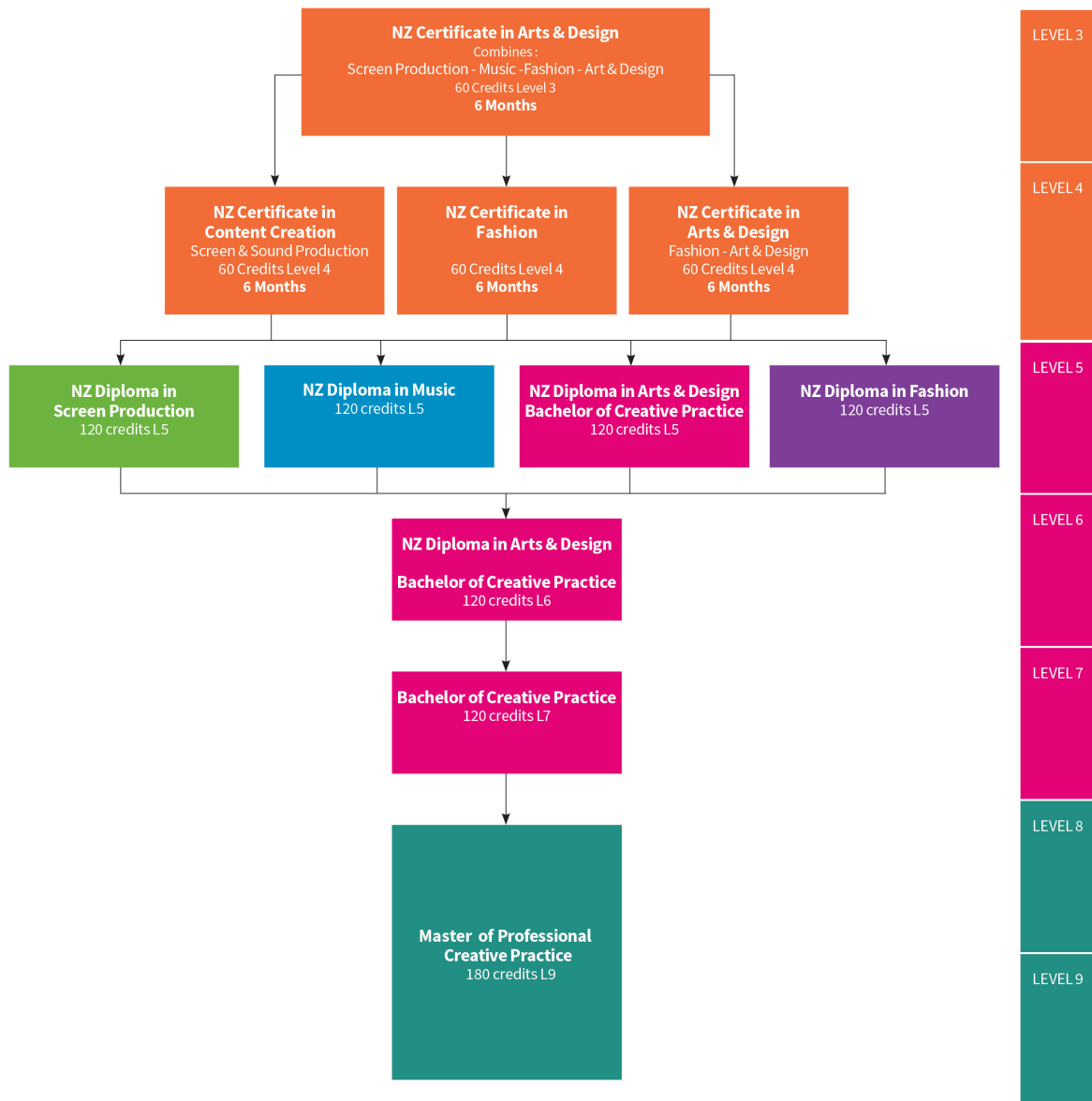


Designer: Amira Malmberg & Kaylee Martini-Hohaia

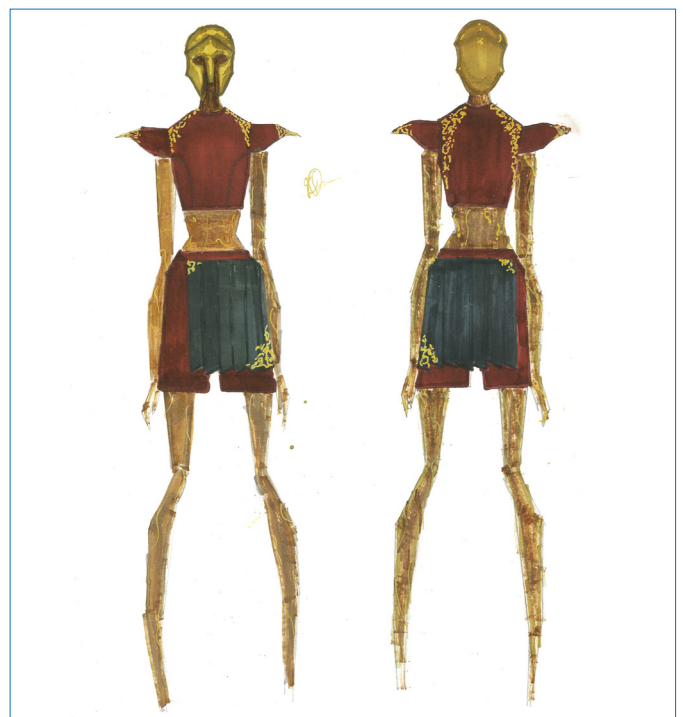


Designer: Emma Bodley

IDEAschool programmes map



Designer: Candice A'acre



Designer: Emma Davis

How to Enrol

There is an easy 3-step process to follow when enrolling at EIT.

Step 1

Check out eit.ac.nz to see the programmes available for you to study. A copy of the course information for each programme is available on our website.

Step 2

You can now use your RealMe verified identity to apply for study at EIT. If you use your RealMe verified identity you will no longer be sent a copy of your application form to sign. You also will not need to provide us with a copy of your primary ID.

If you apply online without using RealMe then you will be sent a summary of your enrolment to check and sign. It will also include course selection forms which you need to complete and return. Your enrolment cannot progress until you have sent the summary and forms back to us.

You can also apply using a paper enrolment form. Please call us on 0800 22 55 348 and we will send you one out.

You will receive an acceptance letter from your Faculty with programme information. This will include the start date of your study and any special information regarding your programme. Depending on your chosen programme of study, you may be invited to attend an interview before you are accepted.

Step 3

Arrangement for full payment of enrolment fees must be made before the start of your programme. You will receive an invoice with payment details.

Fees Free Government Scheme: Tertiary education is fees-free for eligible domestic tertiary students. To check if you are eligible, go to FeesFree.govt.nz and enter your National Student Number (NSN). If you are not eligible you will be responsible for paying your fees.

Scholarships and Grants: Scholarships and grants make life easier by helping to cover your fees, other costs and living expenses while you study. You don't always need to be an academic high-flyer to qualify. You can find out more about scholarships and other options for paying your fees at eit.ac.nz.

StudyLink: If you need to pay for your own study you can choose to apply for your Student Loan and Student Allowance with StudyLink. You should do this early, even if you haven't yet been accepted on your programme. You can change your details later if anything changes. Visit studylink.govt.nz to find out more about StudyLink.

Student Services Levy

The student services levy is a compulsory non-tuition fee that is charged to students enrolled at EIT. The levy is to contribute to the provision of quality student services that support learning. The funds received by EIT from the levy are ring-fenced, meaning they can only be spent on student services.

Student Loans and Allowances

StudyLink is a service of the Ministry of Social Development. Apply well before your programme begins (even if you haven't been accepted yet) so you'll be ready to get your payments when you need them most.

Check out what you qualify for at studylink.govt.nz.



DISCLAIMER:

© Eastern Institute of Technology

All information in this publication pertains to New Zealand Citizens or Permanent Residents, and is correct at the time of printing but is subject to change. EIT reserves the right to amend/withdraw programmes or courses.

Fees for 2026 will be set by November 2025 and are subject to change. For the latest information, or for full programme entry requirements visit eit.ac.nz or phone 0800 22 55 348.