

2024



NZ Certificate in Communication Media

Level 4

Develop your knowledge and experience in screen production and music to expand your skills in filming, editing and audio techniques and music composition and production.

Successful completion of this certificate will assist your application into the NZ Diploma in Screen Production (Level 5), the NZ Diploma in Music (Level 5) or the Bachelor of Creative Practice.

Location	IDEASchool Tairāwhiti in association with Rāngai
Start	June
Length	17 weeks full-time
Contact	Ngaio Blackwood Phone: 06 830 1112 Email: nblackwood@eit.ac.nz

IDEASchool
TE KURA AHU TAONGA



TE AHO A MĀUI



Te Pūkenga

For NZ Citizens and Permanent Residents

Start your communication media career

As a graduate of this qualification you will be able to:

- Apply a variety of introductory skills and techniques in screen and music production to investigate and produce work.
- Apply creative processes and techniques to solve problems in response to a brief.
- Demonstrate introductory work practices in the creative arts and explore potential education and employment pathways.
- Collaborate with others, and reflect on, select and present work.

Subject areas

- Film production
- Digital camera operation
- Script writing
- Sound editing
- Music production
- MIDI composition
- Basic recording
- Visual digital media
- Portfolio development

Career and study opportunities

The NZ Certificate in Communication Media (Level 4) can lead you to apply for entry into the NZ Diploma in Music, NZ Diploma in Screen Production or the Bachelor of Creative Practice. The portfolio completed during the programme can be used to support an application or look for an entry level job in New Zealand's fastest growing industry.

Timetable

Your study time will be made up of contact time (class times, tutorials, industry-based learning) and non-contact time (your own individual study time).

Contact time

On-campus classes are usually scheduled between 9.00am-3.00pm, four days per week.


Non-contact time

You should plan to spend 12.5 hours per week on individual study time.



NZ Certificate in Communication Media Level 4, 60 credits

 Tairāwhiti

 Full-time:
17 weeks

 Fee: Visit fees.eit.ac.nz to see the fees for this programme

Entry requirements

- The NZ Certificate in Communication Media (Level 4) is an open entry programme, but it is recommended to have a NZQA Level 3 qualification.
- Applicants must be aged 16 years and over.

English language entry requirements

All applicants are required to have attained an acceptable level of English language fluency. This may be demonstrated in a variety of ways, including successful study in English, completion of a New Zealand Certificate in English Language (Level 3), approved scores on IELTS tests (5.5 with no band score lower than 5), completion of accepted international equivalents, or completion of the EIT | Te Pūkenga assessment.

Facilities

As part of IDEASchool's Screen Production and Music disciplines in Tairāwhiti, EIT | Te Pūkenga has partnered with Rāngai to deliver the NZ Certificate in Communication Media from state of the art studios in the heart of Gisborne, augmented by on-campus facilities at EIT | Te Pūkenga.

Assessments

A good level of attendance and a willingness to participate and learn are requirements for successful completion of this programme. You will be assessed on the documentation of process in your journal and the work you create.

There will be regular assessment of your work with tutor feedback helping you to achieve your goals.

Your journal/e-portfolio can then be used to support enrolment for creative programmes at either EIT | Te Pūkenga or other institutes.

EIT is now part of Te Pūkenga

Te Pūkenga brings together New Zealand's Institutes of Technology, Polytechnics, and Industry Training Organisations to build a network of on job, on-campus and online learning.

The services we offer not only remain, they are strengthened by being part of the extensive Te Pūkenga network around the country. Your enrolment for study in 2024 will see you enrolling with Te Pūkenga and becoming part of the extensive Te Pūkenga network around the country.

2024 Key dates

Programme starts Monday, 24 June

Programme ends Friday, 1 November

Semester and statutory holidays

Semester break: 26 Aug - Sept 6
HB Anniversary: 25 October
Labour day: 28 October

The experience you need & the support to succeed

When you study at EIT | Te Pūkenga you'll get the kind of experiences that will help you gain the knowledge and skills to get ahead.

You'll also be supported by lecturers and tutors who are here for you, within a learning environment where you are treated as an individual, not just a number.

They'll know your name and you'll receive one-on-one attention to make sure you get the support to succeed.

rāngai



Experienced lecturers

At EIT | Te Pūkenga, you can be confident in the quality of our teaching and your learning experience.

EIT | Te Pūkenga is highly regarded in New Zealand for research excellence due to the quality of our community centred research, our publications and our external grant income provided by funding institutions who have confidence in our research capability. You can be confident your lecturers use the latest knowledge and research in their field of expertise to inform their teaching, and many are at the forefront of knowledge creation within their discipline area.

IDEAschool's teaching staff bring generalised knowledge of visual arts and design theory and practice, with specialised knowledge in particular media areas.

Name	Creative background
Raewyn Paterson <i>Hawke's Bay</i> Programme Coordinator and Lecturer	Raewyn is a multimedia artist who works with themes of ecology, whakapapa and community. Recently she completed her Master of Professional Creative Practice degree and exhibits in public galleries, alongside her dealer gallery works. She has worked at EIT Te Pūkenga teaching and mentoring for the past 15 years with her passion for multimedia, youth and education leading her to her current role of Programme Coordinator.
Lochlan Packman <i>Tairāwhiti</i> Screen Production Lecturer	Since completing his Film and Media Studies degree five years ago Lochlan has been involved in content creation and screen production, working on various advertising, documentary and live TV productions.
Nigel Thornicroft <i>Tairāwhiti</i> Screen Production Lecturer	Nigel has over 20 years of experience in television and film production. His journey began as a camera operator, where he not only honed his craft but also developed a passion for sharing his knowledge with others. Throughout his career, he has worked across various broadcasters and genres, including sports coverage, documentaries, music videos, and feature films.

Programme information

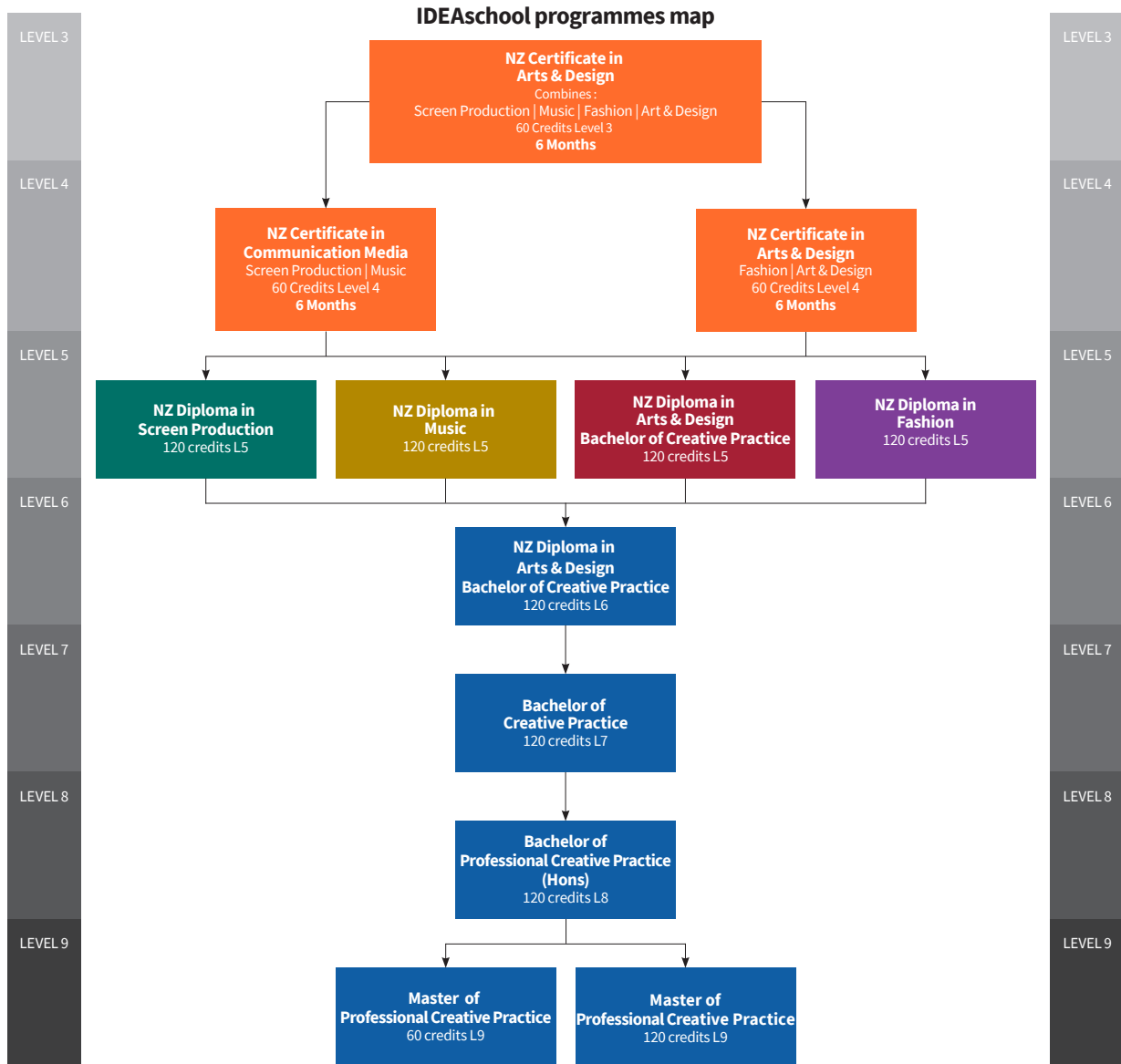
This 17 week programme is designed to be completed within the time allocated. The programme is ideally structured for full-time creative learners entering at Level 4 who wish to progress to Level 5 of the NZ Diplomas / Degree programmes.

Course descriptions

The four projects the programme is based on will lead to your own unique portfolio that can be used to apply for an entry level job in the creative industry or become the basis for further study.

Course no.	Brief description	NZQA level	No. of credits
CCM4.10	Screen Production Introduction to professional interview conventions, filming and editing by creating a small documentary.	4	15
CCM4.20	Music Production Introduction to midi, recording audio, composition and music production techniques by creating soundtracks.	4	15
CCM4.30	Social Media Campaign Combining sound and screen production techniques to produce a short social media campaign.	4	15
CCM4.40	Final Production Developing skills and techniques to produce a communication media production.	4	15

Programme pathway



How to enrol

There is an easy 3-step process to follow when enrolling at EIT | Te Pūkenga.

Step 1

Check out eit.ac.nz to see the programmes available for you to study. A copy of the course information for each programme is available on our website.

Step 2

You can now use your RealMe verified identity to apply for study at EIT | Te Pūkenga. If you use your RealMe verified identity you will no longer be sent a copy of your application form to sign. You also will not need to provide us with a copy of your primary ID.

If you apply online without using RealMe then you will be sent a summary of your enrolment to check and sign. It will also include course selection forms which you need to complete and return. Your enrolment cannot progress until you have sent the summary and forms back to us.

You can also apply using a paper enrolment form. Please call us on **0800 22 55 348** and we will send you one out.

You will receive an acceptance letter from your Faculty with programme information. This will include the start date of your study and any special information regarding your programme. Depending on your chosen programme of study, you may be invited to attend an interview before you are accepted.

Step 3

Arrangement for full payment of enrolment fees must be made before the start of your programme. You will receive an invoice with payment details.

Fees-free government scheme: Tertiary education is fees-free for eligible domestic tertiary students. To check if you are eligible, go to FeesFree.govt.nz and enter your National Student Number (NSN). If you are not eligible you will be responsible for paying your fees.

Scholarships and grants: Scholarships and grants make life easier by helping to cover your fees, other costs and living expenses while you study. You don't always need to be an academic high-flyer to qualify. You can find out more about scholarships and other options for paying your fees at eit.ac.nz.

StudyLink: If you need to pay for your own study you can choose to apply for your Student Loan and Student Allowance with StudyLink. You should do this early, even if you haven't yet been accepted on your programme. You can change your details later if anything changes. Visit studylink.govt.nz to find out more about StudyLink.

Student services levy

The student services levy is a compulsory non-tuition fee that is charged to students enrolled at EIT | Te Pūkenga. The levy is to contribute to the provision of quality student services that support learning. The funds received by EIT | Te Pūkenga from the levy are ring-fenced, meaning they can only be spent on student services.

Student loans and allowances

StudyLink is a service of the Ministry of Social Development. Apply well before your programme begins (even if you haven't been accepted yet) so you'll be ready to get your payments when you need them most.

Check out what you qualify for at studylink.govt.nz.



Disclaimer: The Eastern Institute of Technology Limited is a business division of Te Pūkenga - New Zealand Institute of Skills and Technology. All information in this publication pertains to New Zealand Citizens or Permanent Residents, and is correct at the time of printing but is subject to change. EIT | Te Pūkenga reserves the right to amend/withdraw programmes or courses. From 2023 programmes may be subject to review as part of the Reform of Vocational Education and Training. As the review is ongoing, this document is correct at the time of publishing but the courses outlined may change over time. For full programme entry requirements visit eit.ac.nz.

