

2025



NZ Certificate in Arts and Design

Level 4

This project based programme is ideal for school leavers or adults who would like an introduction to a range of hands on and digital skills in visual creative media.

Successful completion of this certificate will assist your application into one of the Level 5 diplomas in Art and Design, Fashion or Screen Production, or the Bachelor of Creative Practice.

Location IDEASchool Hawke's Bay and Tairāwhiti

Start July

Length 17 weeks full-time

Contact Natalie Blackwood - Hawke's Bay
Phone: 06 830 1112
Email: nblackwood@eit.ac.nz

Steph Barnett - Tairāwhiti
Phone: 06 869 3196
Email: sbarnett@eit.ac.nz

IDEASchool
TE KURA AHU TAONGA

For NZ Citizens and Permanent Residents



The next step in your creative industries career

During the NZ Certificate in Arts and Design [Level 4] you will develop skills and knowledge in a range of hands on media, and build entry level skills in Adobe Creative Suite programmes.

As a graduate of this qualification you will be able to:

- Apply a variety of introductory skills and techniques in art, design and fashion.
- Apply creative processes and techniques to solve problems in response to a brief.
- Demonstrate introductory work practices in the creative arts, and explore potential education and employment pathways.

Subject Areas

- Drawing / Painting
- Creative process
- Garment construction
- Small object and interior/set design
- Graphic Design
- Adobe CC, Photoshop, Illustrator, Aero and Premiere Pro
- Portfolio development

Career and Study Opportunities

You will gain broad introductory knowledge and understanding in a variety of creative contexts.

The NZ Certificate in Arts and Design [Level 4] can lead you to apply for entry into the Level 5 Diplomas in Arts and Design, Fashion or Screen Production, or the Bachelor of Creative Practice.

The portfolio content completed during the programme can be used to support an application for further study or look for an entry level job in New Zealand's creative industries.

Timetable

Your study time will be made up of contact time (class times, tutorials) and non-contact time (your own individual study time).

Contact Time

On campus classes are usually scheduled between 9.00am-3.00pm, four days per week.

Non-contact Time


You should plan to spend 12.5 hours per week on individual study time.



NZ Certificate in Arts and Design Level 4, 60 credits

 Hawke's Bay and Tairāwhiti

 Full-time:
17 weeks

 Fee: Visit fees.eit.ac.nz to see the fees for this programme

2025 Key Dates

Programme Starts Monday, 21 July

Programme Ends Friday, 28 November

**Semester and
Statutory Holidays** Semester Break: 22 September - 3 October
HB Anniversary: 24 October
Labour Day: 27 October

Entry Requirements

- The NZ Certificate in Arts and Design [Level 4] is an open entry programme, but it is recommended to have a NZQA Level 3 qualification.
- Applicants must be aged 16 years and over.

English Language Entry Requirements

All applicants are required to have attained an acceptable level of English language fluency. This may be demonstrated in a variety of ways, including successful study in English, completion of a New Zealand Certificate in English Language (Level 3), approved scores on IELTS tests (5.5 with no band score lower than 5), completion of accepted international equivalents, or completion of the EIT assessment.

Assessments

A good level of attendance and a willingness to participate and learn, are requirements for successful completion of this programme. You will be assessed on the documentation of process in your journal and the work you create. There will be regular assessment of your work with tutor feedback helping you to achieve your goals.

Your journal/e-portfolio can then be used to support enrolment for creative programmes at either EIT or other institutes.

Facilities

This programme is well resourced with access to a variety of materials, equipment and facilities, including:

- 3D / hard materials workshop
- Fashion workshops
- Colour printing/copying
- Painting, drawing and design studios
- Computer suites with industry standard graphics software

Scholarships

Scholarships are a way to help financially support your study. They can make life easier by helping to cover your fees and living expenses while you complete your qualification. You don't always need to be an academic high-flyer to qualify.

Find out what's available at scholarships.eit.ac.nz or for general scholarship information please contact scholarships@eit.ac.nz.

The experience you need & the support to succeed

When you study at EIT you'll get the kind of experiences that will help you gain the knowledge and skills to get ahead.

You'll also be supported by lecturers and tutors who are here for you, within a learning environment where you are treated as an individual, not just a number.

They'll know your name and you'll receive one-on-one attention to make sure you get the support to succeed.



Experienced Lecturers

At EIT, you can be confident in the quality of our teaching and your learning experience.

EIT is highly regarded in New Zealand for research excellence due to the quality of our community centred research, our publications and our external grant income provided by funding institutions who have confidence in our research capability. You can be confident your lecturers use the latest knowledge and research in their field of expertise to inform their teaching, and many are at the forefront of knowledge creation within their discipline area.

IDEASchool's teaching staff bring generalised knowledge of visual arts and design theory and practice, with specialised knowledge in particular media areas.

Name	Creative Background
Raewyn Paterson <i>Hawke's Bay</i> <i>Programme Coordinator and Lecturer</i>	Raewyn is a multimedia artist who works with themes of ecology, whakapapa and community. Recently she completed her Master of Professional Creative Practice degree and exhibits in public galleries, alongside her dealer gallery works. She has worked at EIT teaching and mentoring for the past 15 years with her passion for multimedia, youth and education leading her to her current role of Programme Coordinator.
Steph Barnett <i>Tairāwhiti</i> <i>Site Coordinator and Lecturer</i>	Steph is a multimedia artist and educator with a deep commitment to the Gisborne community and enabling creative expression and growth. Her experience includes secondary school teaching, freelance animation and design work, and ongoing study at Te Wānanga o Aotearoa in te reo Māori me ōna tikanga (Māori language and culture). She has a Bachelor of Arts from Massey University and Secondary Teaching Diploma from the New Zealand Graduate College of Education.

Programme Information

This 17 week programme is designed to be completed within the time allocated. The programme is ideally structured for full-time creative students entering at Level 4 who wish to progress to Level 5 of the NZ Diploma/Degree programmes. Students can select from a wide variety of programmes in all creative fields and specialise towards fashion, screen production, or art and design.

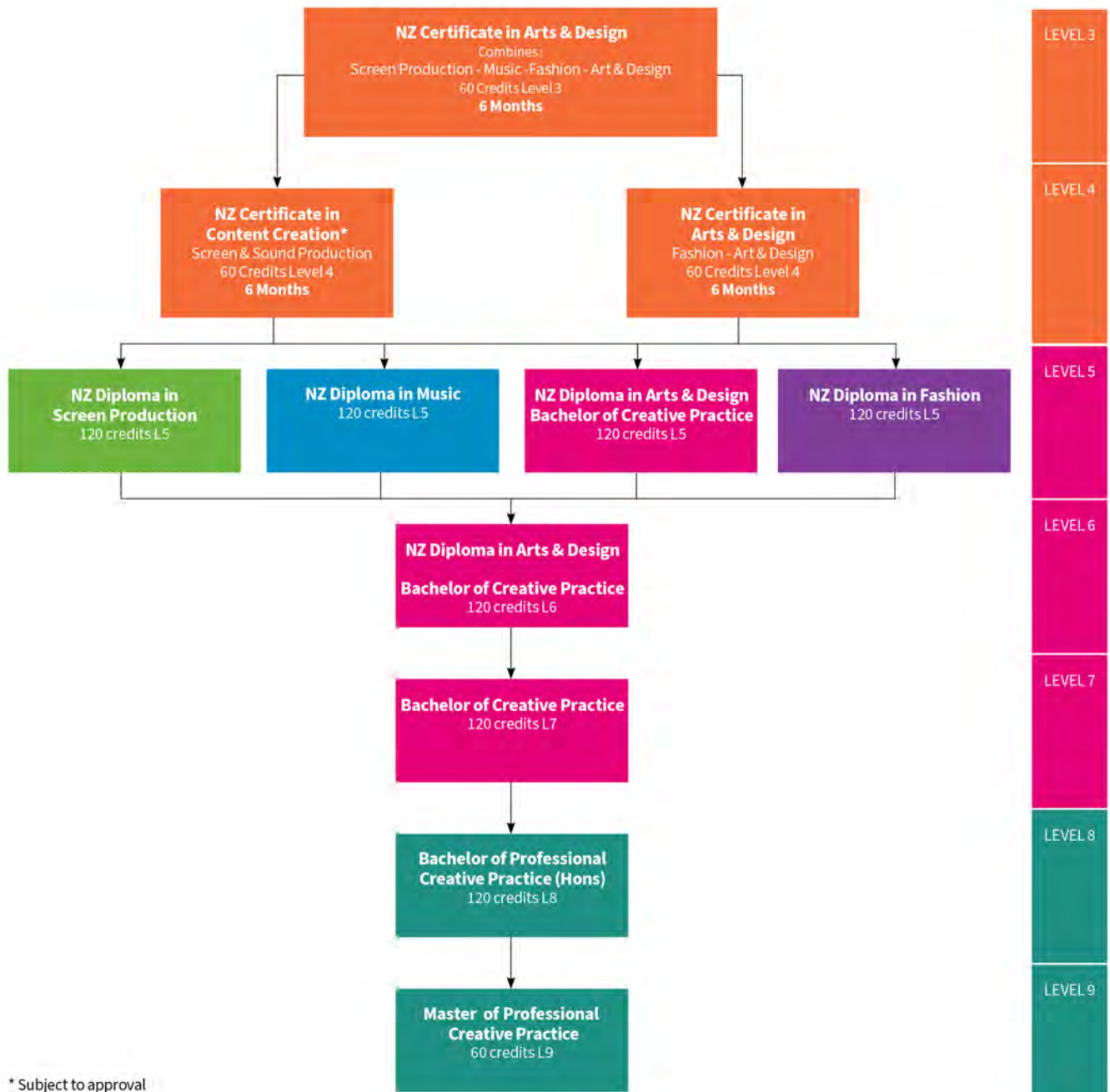
Course Descriptions

The four projects that make up this programme give you introductory skills and knowledge and portfolio content that can be used to apply for an entry level job in the creative industry or become the basis for further study.

Course No.	Brief Description	NZQA Level	No. of Credits
CAD4.02	Ideas / Ideals Experiment with a variety of drawing and painting media, photography, and image manipulation in Adobe Photoshop.	4	15
CAD4.03	Body Adornment Learn basic fashion design principles, construction methods and Adobe Illustrator to create your own unique garment.	4	15
CAD4.01	Geometric Further explore Adobe Suite and hand skills to develop geometric based environments and characters.	4	15
CAD4.04	Concept Design Identity Learn 3D design drawing and modelling and apply the principles of brand identity to your product design using the Adobe Suite.	4	15



Programme Pathway



* Subject to approval



How to Enrol

There is an easy 3-step process to follow when enrolling at EIT.

Step 1

Check out eit.ac.nz to see the programmes available for you to study. A copy of the course information for each programme is available on our website.

Step 2

You can now use your RealMe verified identity to apply for study at EIT. If you use your RealMe verified identity you will no longer be sent a copy of your application form to sign. You also will not need to provide us with a copy of your primary ID.

If you apply online without using RealMe then you will be sent a summary of your enrolment to check and sign. It will also include course selection forms which you need to complete and return. Your enrolment cannot progress until you have sent the summary and forms back to us.

You can also apply using a paper enrolment form. Please call us on 0800 22 55 348 and we will send you one.

You will receive an acceptance letter from your Faculty with programme information. This will include the start date of your study and any special information regarding your programme. Depending on your chosen programme of study, you may be invited to attend an interview before you are accepted.

Step 3

Arrangement for full payment of enrolment fees must be made before the start of your programme. You will receive an invoice with payment details.

Fees Free Government Scheme: Tertiary education is fees-free for eligible domestic tertiary students. To check if you are eligible, go to FeesFree.govt.nz and enter your National Student Number (NSN). If you are not eligible you will be responsible for paying your fees.

Scholarships and Grants: Scholarships and grants make life easier by helping to cover your fees, other costs and living expenses while you study. You don't always need to be an academic high-flyer to qualify. You can find out more about scholarships and other options for paying your fees at eit.ac.nz.

StudyLink: If you need to pay for your own study you can choose to apply for your Student Loan and Student Allowance with StudyLink. You should do this early, even if you haven't yet been accepted on your programme. You can change your details later if anything changes. Visit studylink.govt.nz to find out more about StudyLink.

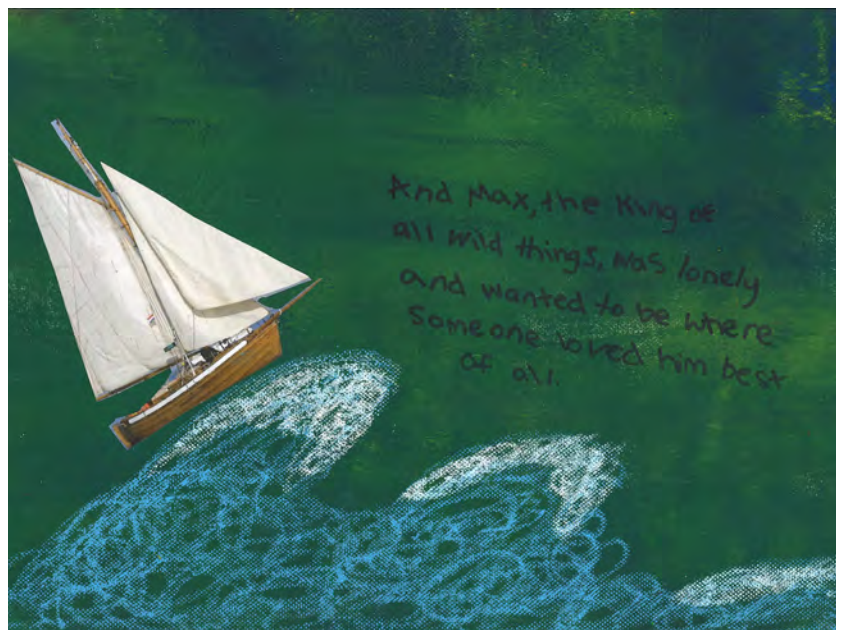
Student Services Levy

The student services levy is a compulsory non-tuition fee that is charged to students enrolled at EIT. The levy is to contribute to the provision of quality student services that support learning. The funds received by EIT from the levy are ring-fenced, meaning they can only be spent on student services.

Student Loans and Allowances

StudyLink is a service of the Ministry of Social Development. Apply well before your programme begins (even if you haven't been accepted yet) so you'll be ready to get your payments when you need them most.

Check out what you qualify for at studylink.govt.nz.



DISCLAIMER:

All information in this publication pertains to New Zealand Citizens or Permanent Residents, and is correct at the time of printing but is subject to change. EIT is a Business Division of Te Pūkenga – New Zealand Institute of Skills and Technology. EIT reserves the right to amend/withdraw programmes or courses. Fees for 2025 will be set by November 2024 and are subject to change.

For the latest information, or for full programme entry requirements visit eit.ac.nz or phone 0800 22 55 348.