

Fee free
Enrol now

2024

NZ Certificate in Arts and Design

Level 3

This project-based programme is ideal for school leavers or adults who would like an introduction to a range of skills and knowledge in the creative arts.

Develop your creative skills and techniques through a series of projects in art, design, digital production and fashion. In semester two you can go on to the Level 4 certificate in Arts and Design (Hawke's Bay and Tairāwhiti) or the Level 4 certificate in Communication Media (Tairāwhiti).

Location IDEASchool Hawke's Bay, Tairāwhiti and Wairoa

Start February

Length 17 weeks full-time

Contact Raewyn Paterson - Hawke's Bay

Phone: 06 830 1136

Email: rpaterson@eit.ac.nz

Steph Barnett - Tairāwhiti

Phone: 06 869 3196

Email: sbarnett@eit.ac.nz

Letia King - Wairoa

Phone: 06 830 1891

Email: lking@eit.ac.nz

Artist: Maureen Box

IDEASchool
TE KURA AHU TAONGA



TE AHO A MĀUI



Te Pūkenga

For NZ Citizens and Permanent Residents

Start your career in the creative industries

This programme has 'real life' opportunities with projects in a variety of arts disciplines. It will introduce you to the bigger picture of the creative sector and how it operates both locally in Aotearoa New Zealand and globally.

As a graduate of this qualification you will be able to:

- Apply a variety of introductory skills and techniques in art, design, digital production and fashion to investigate and produce work.
- Apply creative processes and techniques to solve problems in response to a brief.
- Demonstrate introductory work practices in the creative arts and explore potential education and employment pathways.
- Collaborate with others and reflect on, select and present work.

Subject areas

- Painting
- Introduction to drawing and design
- Textile
- Digital production
- Printmaking
- Clay / small object design
- Portfolio development

Career and study opportunities

You will gain broad introductory knowledge and understanding in a variety of creative contexts.

Successful completion of the NZ Certificate in Arts and Design (Level 3), followed by the NZ Certificate in Arts and Design (Level 4) can lead you to apply for entry into the Diplomas in Arts and Design, Music, Screen Production, Fashion or the Bachelor of Creative Practice.

The portfolio content completed during the programme can be used to support an application for further study or look for an entry level job in New Zealand's most inspiring industry.

Timetable

Your study time will be made up of contact time (class times, tutorials) and non-contact time (your own individual study time).

Contact time

On-campus classes are usually scheduled between 9.00am-3.00pm, four days per week.

Non-contact time

You should plan to spend 12.5 hours per week on individual study time.



NZ Certificate in Arts and Design Level 3, 60 credits

 Hawke's Bay, Tairāwhiti and Wairoa

 Full-time:
17 weeks

 Fee:
Visit fees.eit.ac.nz to see the fees for this programme

Entry requirements

The NZ Certificate in Arts and Design (Level 3) is an open entry programme, which means no formal academic qualifications are required. Applicants must be aged 16 years and over.

English language entry requirements

All applicants are required to have attained an acceptable level of English language fluency. This may be demonstrated in a variety of ways, including successful study in English, completion of a New Zealand Certificate in English Language (Level 3), approved scores on IELTS tests (5.0 Academic with no band score lower than 5.0), completion of accepted international equivalents, or completion of an EIT | Te Pūkenga assessment.

Literacy and numeracy skills

A literacy and numeracy assessment is part of the preparation for all level one to three programmes. This is a national requirement from the Tertiary Education Commission (TEC). This information gives your tutors information on what you already know to help them provide the help that you may need in your studies.

There are two assessments. The first assessment will take place within the first three weeks of the programme. The second will be a week or two before you finish the programme. This final assessment will show how you have improved with your Literacy and Numeracy skills.

There will always be a tutor to help you when doing the assessment. The most important thing to know about this assessment is that you cannot fail. You will merely get information on your literacy and numeracy skills. The result will not have an impact on any of your assessment marks in your course work.

Assessments

A good level of attendance and a willingness to participate and learn are requirements for successful completion of this programme. You will be assessed on your documentation of process and the work you create. There will be regular assessment of your work with tutor feedback helping you to achieve your goals.

In the final project of your programme you may, with tutor guidance, compile a portfolio of your work which can then be used to support enrolment for creative programmes at either EIT | Te Pūkenga or other institutes.

2024 Key dates

Programme starts Monday, 19 February

Programme ends Thursday, 27 June

Semester and statutory holidays
Easter: 29 March-2 April
Semester break: 15-26 April
King's B/day: 3 June

Facilities

The IDEAschool studios and workshops are fully set-up with all necessary equipment including design software and hardware, facilities for blog and web-design, art and design work, printmaking presses and sewing machinery.

EIT is now part of Te Pūkenga

Te Pūkenga brings together New Zealand's Institutes of Technology, Polytechnics, and Industry Training Organisations to build a network of on job, on-campus and online learning.

The services we offer not only remain, they are strengthened by being part of the extensive Te Pūkenga network around the country. Your enrolment for study in 2024 will see you enrolling with Te Pūkenga and becoming part of the extensive Te Pūkenga network around the country.

The experience you need & the support to succeed

When you study at EIT | Te Pūkenga you'll get the kind of experiences that will help you gain the knowledge and skills to get ahead.

You'll also be supported by lecturers and tutors who are here for you, within a learning environment where you are treated as an individual, not just a number.

They'll know your name and you'll receive one-on-one attention to make sure you get the support to succeed.



Experienced lecturers

At EIT | Te Pūkenga, you can be confident in the quality of our teaching and your learning experience.

EIT | Te Pūkenga is highly regarded in New Zealand for research excellence due to the quality of our community centred research, our publications and our external grant income provided by funding institutions who have confidence in our research capability. You can be confident your lecturers use the latest knowledge and research in their field of expertise to inform their teaching, and many are at the forefront of knowledge creation within their discipline area.

IDEASchool's teaching staff bring generalised knowledge of visual arts and design theory and practice, with specialised knowledge in particular media areas.

Name	Creative background
Raewyn Paterson <i>Hawke's Bay</i> <i>Programme Coordinator and Lecturer</i>	Raewyn is a multimedia artist who works with themes of ecology, whakapapa and community. Recently she completed her Master of Professional Creative Practice degree and exhibits in public galleries, alongside her dealer gallery works. She has worked at EIT Te Pūkenga teaching and mentoring for the past 15 years with her passion for multimedia, youth and education leading her to her current role of Programme Coordinator.
Steph Barnett <i>Tairāwhiti</i> <i>Site Coordinator and Lecturer</i>	Steph is a multimedia artist and educator with a deep commitment to the Gisborne community and enabling creative expression and growth. Her experience includes secondary school teaching, freelance animation and design work, and ongoing study at Te Wananga o Aotearoa in te reo Māori me ōna tikanga (Māori language and culture). She has a Bachelor of Arts from Massey University and Secondary Teaching Diploma from the New Zealand Graduate College of Education.
Valeta Mathias <i>Wairoa</i> <i>Lecturer</i>	Valeta's art practice spans over four decades and is varied in media application across many art disciplines from Māori Visual Arts, to abstract and narrative art, landscape, seascape, animals and many other art compositions. She has an Advanced Diploma in Art and Creativity (Level 7) and a Diploma in Tertiary Teaching. Valeta has been previously employed by EIT Te Pūkenga as a tutor at the Hawke's Bay campus for various programmes.

Programme information

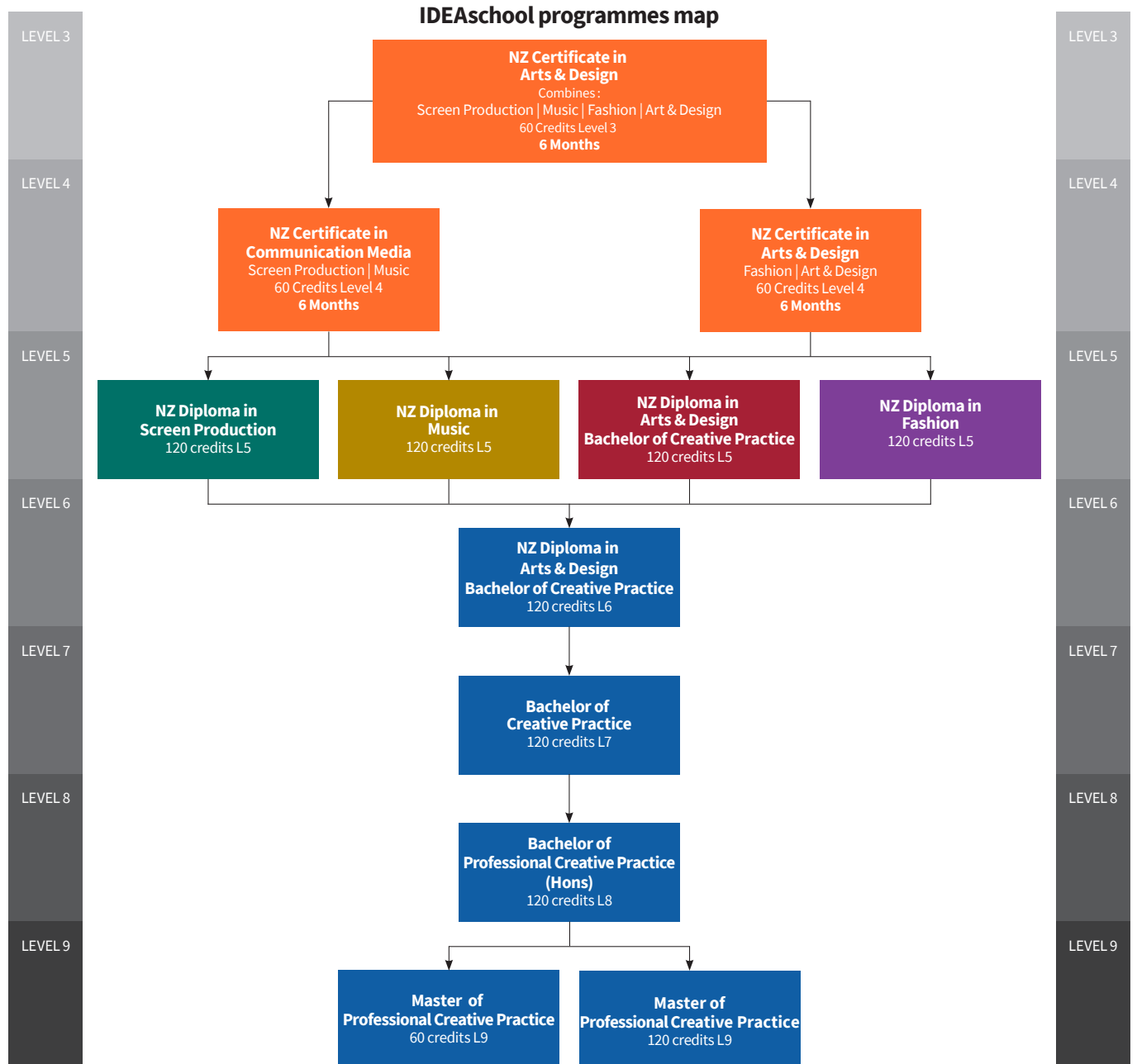
This 17 week programme is designed to be completed within the time allocated. The programme is ideally structured for full-time creative learners entering at level 3 who wish to progress to level 4 of the NZ Certificates or level 5 of the NZ Diploma/Degree programmes. Learners can select from a wide variety of programmes in all creative fields and specialise towards music, fashion, screen production, or art and design.

Course descriptions

The four projects that make up this programme give you introductory skills and knowledge and portfolio content that can be used to apply for an entry level job in the creative industry or become the basis for further study.

Course no.	Brief description	NZQA level	No. of credits
CAD3.01	Plan, Print, Construct Set up your e-portfolio, introduction to printmaking and basic textile construction skills.	3	15
CAD3.02	Kinetic Constructs An introduction to drawing, painting and collage and basic 3D materials to create work(s) that incorporate movement.	3	15
CAD3.03	Digital Production Explore design principles and how to use them in a variety of media to be published in a digital format.	3	15
CAD3.04	Showcase Extend your skills, and learn how to present your work in a formal portfolio and mini exhibition.	3	15

Programme pathway



How to enrol

There is an easy 3-step process to follow when enrolling at EIT | Te Pūkenga.

Step 1

Check out eit.ac.nz to see the programmes available for you to study. A copy of the course information for each programme is available on our website.

Step 2

You can now use your RealMe verified identity to apply for study at EIT | Te Pūkenga. If you use your RealMe verified identity you will no longer be sent a copy of your application form to sign. You also will not need to provide us with a copy of your primary ID.

If you apply online without using RealMe then you will be sent a summary of your enrolment to check and sign. It will also include course selection forms which you need to complete and return. Your enrolment cannot progress until you have sent the summary and forms back to us.

You can also apply using a paper enrolment form. Please call us on 0800 22 55 348 and we will send you one out.

You will receive an acceptance letter from your Faculty with programme information. This will include the start date of your study and any special information regarding your programme. Depending on your chosen programme of study, you may be invited to attend an interview before you are accepted.

Step 3

Arrangement for full payment of enrolment fees must be made before the start of your programme. You will receive an invoice with payment details.

Fees-free government scheme: Tertiary education is fees-free for eligible domestic tertiary students. To check if you are eligible, go to FeesFree.govt.nz and enter your National Student Number (NSN). If you are not eligible you will be responsible for paying your fees.

Scholarships and grants: Scholarships and grants make life easier by helping to cover your fees, other costs and living expenses while you study. You don't always need to be an academic high-flyer to qualify. You can find out more about scholarships and other options for paying your fees at eit.ac.nz.

StudyLink: If you need to pay for your own study you can choose to apply for your Student Loan and Student Allowance with StudyLink. You should do this early, even if you haven't yet been accepted on your programme. You can change your details later if anything changes. Visit studylink.govt.nz to find out more about StudyLink.

Student services levy

The student services levy is a compulsory non-tuition fee that is charged to students enrolled at EIT | Te Pūkenga. The levy is to contribute to the provision of quality student services that support learning. The funds received by EIT | Te Pūkenga from the levy are ring-fenced, meaning they can only be spent on student services.

Student loans and allowances

StudyLink is a service of the Ministry of Social Development. Apply well before your programme begins (even if you haven't been accepted yet) so you'll be ready to get your payments when you need them most.

Check out what you qualify for at studylink.govt.nz.



Disclaimer: The Eastern Institute of Technology Limited is a business division of Te Pūkenga - New Zealand Institute of Skills and Technology. All information in this publication pertains to New Zealand Citizens or Permanent Residents, and is correct at the time of printing but is subject to change. EIT | Te Pūkenga reserves the right to amend/withdraw programmes or courses. From 2023 programmes may be subject to review as part of the Reform of Vocational Education and Training. As the review is ongoing, this document is correct at the time of publishing but the courses outlined may change over time. For full programme entry requirements visit eit.ac.nz.

