

2024



# Master of Health Science

The Health Science Postgraduate Programmes at EIT | Te Pūkenga offer a selection of courses designed to meet the needs of interdisciplinary health professionals, health service managers and other allied healthcare professionals whose practice has a focus on health.

The Master of Health Science is the programme which completes the journey for many of our learners from the Postgraduate Certificate and Diploma in Health Science.

Location	Hawke's Bay*
Start	February and July
Length	18 months full-time**
Contact	Stacey Wong Phone: 06 830 1507 Email: <a href="mailto:swong@eit.ac.nz">swong@eit.ac.nz</a>

\* Blended delivery (face-to-face and online).

\*\* Part-time study available.

For NZ Citizens and Permanent Residents



TE AHO A MĀUI



Te Pūkenga

# Investigate improving health outcomes for yourself and your community

The Master of Health Science is an 18 month full-time, 180 credit programme (part-time study options also available) which provides the opportunity for interdisciplinary health professionals and health service managers to advance their practice, knowledge and critical analysis skills in a flexible and engaging learning environment.

The Health Science interdisciplinary and inter-professional courses are all offered in a blended manner, with online learning supported by face-to-face workshops, tutorials or block courses.

The flexible delivery of this programme allows you to study at your pace, in your place, from locations throughout New Zealand.

Courses are designed around knowledge and research relating to key threads of health issues to support the development of advanced practice or understanding. The programme provides you with the opportunity to investigate the improvement of health, reduction of health disparities and protection against global threats in both a national and international context.

The multidisciplinary and inter-professional context of health science involves everyone sharing discussions from their own experiences, enabling all practitioners to advance their knowledge of health treatment, healthcare and prevention of disparities in a truly interdisciplinary sphere.

## Career opportunities

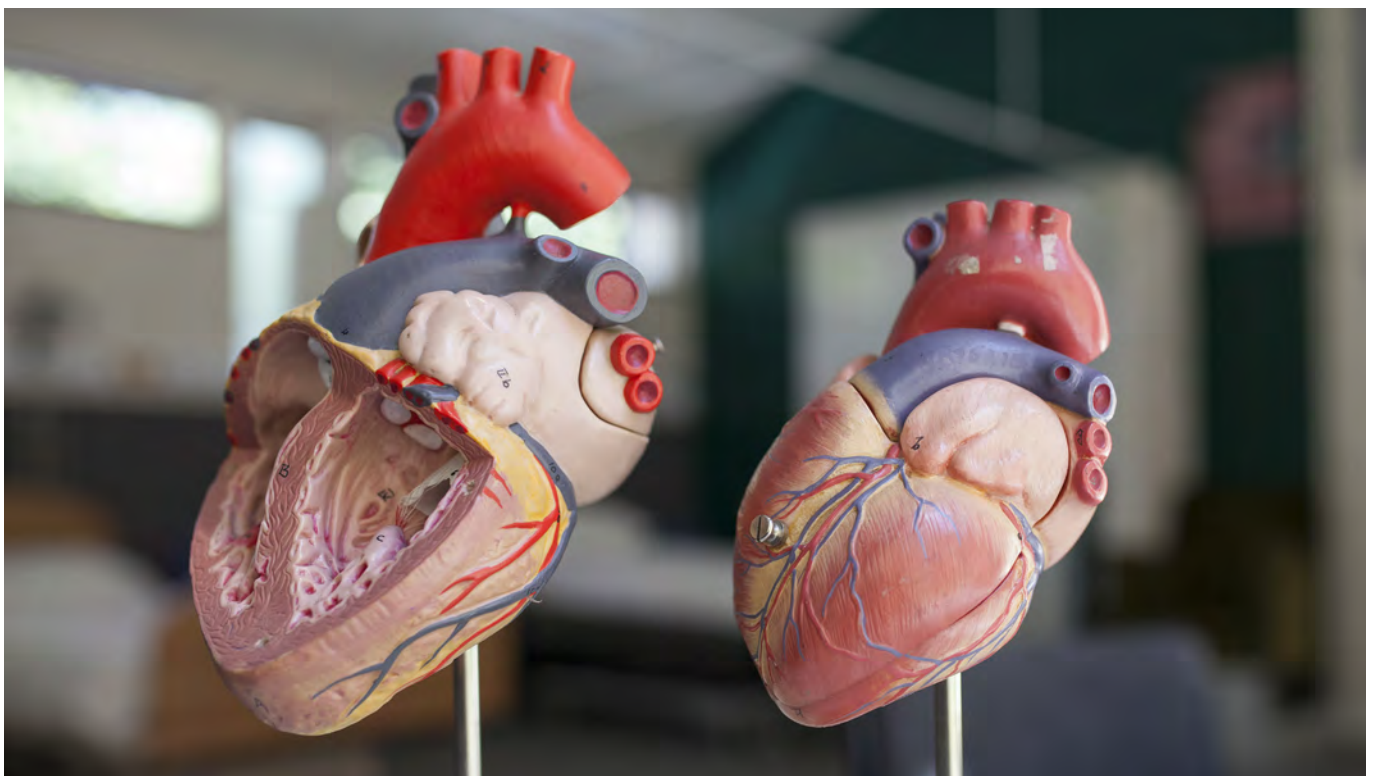
Multiple study pathways are available in discussion with your Programme Coordinator, however the most common pathways are:

1. Complete three courses at level 8 (90 credits) and the level 9 (90 credits) Thesis course; or
2. Complete four courses at level 8 (120 credits) and 60 credits at level 9, including a choice from a range of research courses, namely Independent Scholarly Project (30 credit), Applied Research Report (45 credit), or Applied Research Dissertation (60 credit).


You will be expected to talk to the Programme Coordinator to confirm your study pathway.


- Contact Associate Professor Anita Jagroop-Dearing (Health Science) on 06 830 1535 or email [ajagroopdearing@eit.ac.nz](mailto:ajagroopdearing@eit.ac.nz).

Possible career outcomes include Allied Health Professional, Health Management, Health Promotion, Health Policy Analyst, Health Consultant and Research Assistant. These programmes have also been a pathway for Health Educators, Naturopathy, Dental Technicians, Health Scientists and Sport Scientists.



## Master of Health Science Level 9, 180 credits

 Blended delivery (face-to-face and online)

 Full-time: 18 months  
Part-time: up to 3 years

 Fee:  
Visit [fees.eit.ac.nz](https://fees.eit.ac.nz) to see the fees for this programme

### Contact time

Each course credit generally represents 10 hours of learning study time over the period of the course, therefore, a 30 credit course is equivalent to approximately 300 learning hours.

Each course consists of online learning opportunities and in some cases face-to-face sessions. You are expected to spend substantial time in independent study and self-management.

Face-to-face sessions may be held by block course. The online learning platform may be web-based and supported with face-to-face delivery in some courses. You will be notified of contact dates and venues prior to courses commencing.

### Additional costs

- Online access is expected throughout the programme
- Textbooks may be recommended for purchase however the EIT | Te Pūkenga library has an excellent range of resources

### Entry requirements

- A NZQF listed Bachelor's or higher level degree (or equivalent) in a health-related field with a minimum of the equivalent to a B average as per the EIT | Te Pūkenga-specified 11-point achievement-based grading system; or
- A degree or equivalent professional qualification in a different field if the applicant can supply evidence of work experience at degree level or above within a health related field, subject to an interview and/or the submission of a portfolio of evidence to establish the status and relevance of the applicant's prior learning and experience; or
- Completion of the Postgraduate Diploma in Health Science with a minimum B average; or
- At the discretion of EIT | Te Pūkenga, where an applicant's situation is compelling but not covered by the requirements listed above.

### English language entry requirements

Applicants from countries in which English is not the primary spoken language must demonstrate an acceptable level of English language fluency prior to acceptance in the programme. Ways in which English language fluency may be demonstrated include:

## 2024 Key dates

**Intake one starts** Monday, 19 February

**Intake two starts** Monday, 22 July

**Year ends** Friday, 29 November

**Semester breaks** 15-26 April  
1-19 July  
30 September-11 October

- Completion of a programme of study in which English was the language of instruction (conditions apply\*)
- Approved scores on IELTS tests, namely an Academic score of 6.5 with no band lower than 6 (or accepted international equivalents)

\*See NZQA English language entry requirements for international students at <https://www.nzqa.govt.nz/providers-partners/qa-system-for-teos/english-international-students/>

### Entry with credit

Applicants may apply for entry with credit where there is a match between previous learning and level for the course(s) for which credit is sought.

The Postgraduate Programmes Cluster Committee has discretion in the granting of academic credit.

Academic credit may be awarded as specified credit where there is a substantial match between previous learning and the course for which academic credit is sought; or unspecified credit where the learning is broadly relevant to the Master of Health Science and can be determined to be equivalent to NZQF Level 8.

Academic credit may only be awarded at NZQF Level 8.

A maximum of 120 credits may be awarded, including a maximum of 90 unspecified credits, with the remainder specified. Any unspecified credit awarded must contribute directly to the Master of Health Science Graduate Profile.

A recognition of prior learning/entry with credit application pack is available on enrolment. It is recommended that applications for recognition of prior learning/entry with credit are made as part of an initial application.

For further information please contact the Postgraduate Programmes Administrator, Stacey Wong, on 06 830 1507.

### Assessments

Assessments are dependent on course learning outcomes and described fully in the course materials. Assessments may take the form of written assignments, presentations, portfolios and journalling exercises.

## Facilities

EIT | Te Pūkenga offers online learning facilities such as library access, library learning advisors, email and support in learning technology and academic performance.

For more information visit [myeit.eit.ac.nz](https://myeit.eit.ac.nz)

## EIT is now part of Te Pūkenga

Te Pūkenga brings together New Zealand's Institutes of Technology, Polytechnics, and Industry Training Organisations to build a network of on job, on-campus and online learning. The services we offer not only remain, they are strengthened by being part of the extensive Te Pūkenga network around the country. Your enrolment for study in 2024 will see you enrolling with Te Pūkenga and becoming part of the extensive Te Pūkenga network around the country.

## The experience you need & the support to succeed

When you study at EIT | Te Pūkenga you'll get the kind of experiences that will help you gain the knowledge and skills to get ahead.

You'll also be supported by lecturers and tutors who are here for you, within a learning environment where you are treated as an individual, not just a number. They'll know your name and you'll receive one-on-one attention to make sure you get the support to succeed.

## Experienced lecturers

At EIT | Te Pūkenga, you can be confident in the quality of our teaching and your learning experience.

EIT | Te Pūkenga is highly regarded in New Zealand for research excellence due to the quality of our community centred research, our publications and our external grant income provided by funding institutions who have confidence in our research capability. You can be confident your lecturers use the latest knowledge and research in their field of expertise to inform their teaching, and many are at the forefront of knowledge creation within their discipline area.

Education is facilitated by lecturers with advanced academic qualifications and specific clinical expertise. We value our partnership with learners and aim to provide high quality education in a supportive environment, encouraging personal growth and professional development.

Name	Qualification
Associate Professor <b>Anita Jagroop-Dearing</b> <i>Programme Coordinator</i>	PhD (Health Science), MPhil (Medicine), BSc (Honours) (Pharmacology), FRSPH

## Course descriptions

Courses offered may change subject to enquiries and enrolment numbers. Please consult with the Programme Coordinator in regard to course choices.

### Level 8 courses

Course no.	Course title	NZQA level	No. of credits
MHS8.424	Global Health	8	30
MHS8.432	Health Promotion	8	30
MHS8.433	Exercise for Special Populations	8	30
MHS8.434	Health and Public Policy	8	30
MHS8.435	Māori and Indigenous Health	8	30
MHS8.437	Health Management	8	30
MHS8.438	Health Psychology	8	30
MHS8.440	Health Communities	8	30
MHS8.442	Applied Nutrition	8	30
MHS8.443	Health in Aotearoa New Zealand	8	30



Course no.	Course title	NZQA level	No. of credits
MN8.402	Advanced Pathophysiology for Health Professionals	8	30
MN8.405	Ethical Concepts and Legal Issues for Advanced Practice	8	30
MN8.407	Human Lactation, Breastfeeding and Infant Nutrition	8	30
MN8.408	Health Services Management	8	30
MN8.411	Advanced Practice to Support Elder Health	8	30
MN8.417	Advanced Diabetes Nursing	8	30
MN8.418	Advanced Primary Health Care	8	30
MNSC8.003	Infectious and Communicable Diseases	8	30
PGDA8.100	Data Analytics and Visualisation	8	15
PGMS8.415	He Hokinga Mahara (Māori Research Methodologies and Proposal)	8	30
PGRM8.100	Applied Research Methods	8	15
PGRP8.100	Research Proposal	8	15
PGST8.100	Special Topic I	8	15
PGWIL8.100	Work Integrated Learning	8	15

#### Level 9 courses

Course no.	Course title	NZQA level	No. of credits
MHSC9.001	Global Health Case Studies	9	15
MN9.490	Masterate Research Thesis	9	90
MPP9.480	Te Aka Niwhaniwha: Community Work-based Project	9	60
PGAC9.300	Applied Capstone	9	15
PGARD9.700	Applied Research Dissertation	9	60
PGARR9.500	Applied Research Report	9	45
PGART9.900	Applied Research Thesis	9	90
PGCCC9.200	Communicating Complex Concepts	9	15
PGEIP9.800	Extended Integrated Project	9	60
PGIP9.600	Integrated Project	9	45
PGISP9.400	Independent Scholarly Project	9	30
PGST9.100	Special Topic II	9	15



# How to enrol

There is an easy 3-step process to follow when enrolling at EIT | Te Pūkenga.

## Step 1

Check out [eit.ac.nz](http://eit.ac.nz) to see the programmes available for you to study. A copy of the course information for each programme is available on our website.

## Step 2

You can now use your RealMe verified identity to apply for study at EIT | Te Pūkenga. If you use your RealMe verified identity you will no longer be sent a copy of your application form to sign. You also will not need to provide us with a copy of your primary ID.

If you apply online without using RealMe then you will be sent a summary of your enrolment to check and sign. It will also include course selection forms which you need to complete and return. Your enrolment cannot progress until you have sent the summary and forms back to us.

You can also apply using a paper enrolment form. Please call us on 0800 22 55 348 and we will send you one out.

You will receive an acceptance letter from your Faculty with programme information. This will include the start date of your study and any special information regarding your programme. Depending on your chosen programme of study, you may be invited to attend an interview before you are accepted.

## Step 3

Arrangement for full payment of enrolment fees must be made before the start of your programme. You will receive an invoice with payment details.

**Fees-free government scheme:** Tertiary education is fees-free for eligible domestic tertiary students. To check if you are eligible, go to [FeesFree.govt.nz](http://FeesFree.govt.nz) and enter your National Student Number (NSN). If you are not eligible you will be responsible for paying your fees.

**Scholarships and grants:** Scholarships and grants make life easier by helping to cover your fees, other costs and living expenses while you study. You don't always need to be an academic high-flyer to qualify. You can find out more about scholarships and other options for paying your fees at [eit.ac.nz](http://eit.ac.nz).

**StudyLink:** If you need to pay for your own study you can choose to apply for your Student Loan and Student Allowance with StudyLink. You should do this early, even if you haven't yet been accepted on your programme. You can change your details later if anything changes. Visit [studylink.govt.nz](http://studylink.govt.nz) to find out more about StudyLink.

## Student services levy

The student services levy is a compulsory non-tuition fee that is charged to students enrolled at EIT | Te Pūkenga. The levy is to contribute to the provision of quality student services that support learning. The funds received by EIT | Te Pūkenga from the levy are ring-fenced, meaning they can only be spent on student services.

## Student loans and allowances

StudyLink is a service of the Ministry of Social Development. Apply well before your programme begins (even if you haven't been accepted yet) so you'll be ready to get your payments when you need them most.

Check out what you qualify for at [studylink.govt.nz](http://studylink.govt.nz).



Disclaimer: The Eastern Institute of Technology Limited is a business division of Te Pūkenga - New Zealand Institute of Skills and Technology. All information in this publication pertains to New Zealand Citizens or Permanent Residents, and is correct at the time of printing but is subject to change. EIT | Te Pūkenga reserves the right to amend/withdraw programmes or courses. From 2023 programmes may be subject to review as part of the Reform of Vocational Education and Training. As the review is ongoing, this document is correct at the time of publishing but the courses outlined may change over time. For full programme entry requirements visit [eit.ac.nz](http://eit.ac.nz).





## Master of Health Science

### Important - please note

We urge you to enrol as soon as possible, but no later than:

- **Monday, 22 January 2024** for 2024 full year or first semester courses

and

- **Monday, 24 June 2024** for 2024 second semester courses.

In the past people have delayed enrolling or re-enrolling and have subsequently missed out on being able to enrol in their chosen course/s because it has either been full or has been cancelled due to low enrolments.

By enrolling early it allows us to manage this and if necessary, offer you suitable alternative options for you to consider in a timely manner.

Any applications after closing date will only be considered if vacancies still exist within your chosen course.

All efforts will be made in the first instance to enrol you into your chosen courses.







## Master of Health Science

### 2024 postgraduate nursing and health science programmes Hawke's Bay campus

Please find enclosed enrolment information for our postgraduate courses offered in 2024. The following website link will take you to the programme timetable, showing in which semester each course is offered, and whether there are any compulsory study days that are applicable:

- 2024 Timetable: <https://www2.eit.ac.nz/library/Documents/PGNTimetable2024.pdf>

The majority of courses are offered in an online delivery mode, meaning there will be no requirement for you to physically attend classes. Other courses are available through flexible (blended/online) delivery, meaning that some of the courses do require you to attend workshops. Unless specified, face-to-face classes are held at the EIT | Te Pūkenga Hawke's Bay campus in Taradale, and the rest of your learning is carried out online. You will be notified of dates and venues prior to the commencement of your course.

Please note, for your study purposes, each 30 credit course requires 56 contact hours (i.e. equivalent to eight study days of release time). Registered nurse applicants are strongly advised to refer to their local Te Whatu Ora Postgraduate Funding Coordinator, should they require information about Health Workforce postgraduate nursing education funding.

For those of you who are new to online study, we will be offering an "Orientation to Online Learning", which will be held online. Participation is highly recommended. Please note that enrolling in a postgraduate course with an online component assumes that you have at least some basic computer knowledge and skills and your own computer or laptop (or access to one) and high speed internet access. The Orientation involves a combination of self-directed activities and various Zoom sessions. You will be notified of dates and further details prior to the start of the semester.

Please refer to the previous page for enrolment close-off dates.

**Applying for academic credit:** There is a separate application for this.

**New learners:** It may be possible for us to consider credit of previous formal postgraduate study from another institution, or some recognition of prior learning. Please request an application pack from us.

**EIT | Te Pūkenga returning learners:** If you have previously completed a postgraduate health science qualification at EIT | Te Pūkenga and are progressing onto further study after a period of five years or more, you may wish to apply for credit. We recommend that you do this at time of enrolment into the new programme. Please request an application pack from us.

Existing EIT | Te Pūkenga learners who have progressed onto further study after a break of fewer than five years are not required to apply.

If you have any queries, please do not hesitate to contact Stacey Wong, Postgraduate Programmes Administrator on 06 8301507, or email [swong@eit.ac.nz](mailto:swong@eit.ac.nz).





# Master of Health Science

## 2024 enrolment documentation checklist

Please enclose the following required documentation with your enrolment form. An incomplete application will delay the enrolment process.

Applicant name: .....

Address: .....

Email: .....

Phone: Day ..... Night .....

Professional qualification: .....

Academic qualification: .....

Current role: .....

### Checklist ✓

#### All enrolments:

- EIT | Te Pūkenga enrolment form or re-enrolment form (with these forms attached)
- Course selection form
- For nurses, evidence of your current Annual Practising Certificate, or your Nursing Council of New Zealand Registration number and expiry date: .....
- Postgraduate programmes learning plan

#### Plus:

Include the following, if this is your first enrolment into a **postgraduate** programme at EIT | Te Pūkenga:

- Verified copy of your academic record(s) for relevant qualifications, showing grades for all courses\*
- Verified copy of birth certificate or passport\*
- Verified copy of deed poll certificate or marriage certificate (if applicable)\*
- Curriculum vitae

\*A verified copy is a copy that has been signed by a Justice of the Peace, Court Registrar or EIT | Te Pūkenga Faculty/Administration staff member. This person must have seen the original document.

You will be notified by email confirming your enrolment acceptance.



Course selection for: \_\_\_\_\_

(please print your name clearly)

**Semester 1**

Course code and name	Course fee	Delivery method	Dates and other details	Please indicate your course selection from the following Programmes			
<b>MN8.401 Advanced Clinical Assessment &amp; Diagnostic Reasoning</b> (NB: current Annual practising certificate required)	TBC	Blended/ Online	Commences: 19 February to – 27 June 2024 <b>Compulsory 2-day contact sessions:</b> Day one, online Thursday, 29 February 2024 Day two, on campus Friday, 1 March 2024 Commences: 19 February to – 27 June 2024	PGCerTHS <input type="checkbox"/> MNSc <input type="checkbox"/>	PGDipHS <input type="checkbox"/> MN <input type="checkbox"/>	<input type="checkbox"/>	<input type="checkbox"/>
<b>MN8.402 Advanced Pathophysiology for Health Professionals</b>	TBC	Online	Commences: 19 February to – 27 June 2024	PGCerTHS <input type="checkbox"/> MNSc <input type="checkbox"/>	PGDipHS <input type="checkbox"/> MN <input type="checkbox"/>	<input type="checkbox"/>	MHSc <input type="checkbox"/>
<b>MN8.409 Pharmacotherapeutics for Advanced Nursing/Midwifery Practice</b> (NB: current Annual practising certificate required)	TBC	Online	Commences: 19 February to – 27 June 2024	PGCerTHS <input type="checkbox"/> MNSc <input type="checkbox"/>	PGDipHS <input type="checkbox"/> MN <input type="checkbox"/>	<input type="checkbox"/>	<input type="checkbox"/>
<b>MN8.424 Registered Nurse Prescribing Practicum</b> (NB: current Annual practising certificate required)	TBC	Blended/ Online	Commences: 19 February to – 27 June 2024 <b>Compulsory workshop and online tutorials:</b> Friday, 9 February 2024. 3x 3-hour online tutorials – TBC Commences: 19 February to 29 November 2024	MNSc <input type="checkbox"/>	PGDipHS <input type="checkbox"/> MN <input type="checkbox"/>	<input type="checkbox"/>	CoP <input type="checkbox"/>
<b>MN8.427 Advanced Practice for Nurse Practitioner</b> (60 credits/year-long course)	TBC	Blended/ Online	<b>Compulsory contact sessions x 6:</b> Thursday 22 & Friday 23 February; Fridays: 12 April, 14 June, 9 August, 20 September.2024	MNSc <input type="checkbox"/>	MN <input type="checkbox"/>	<input type="checkbox"/>	CoP <input type="checkbox"/>
<b>MNSC8.001 Nursing Education and Curricula</b>	TBC	Online	Commences: 19 February to – 27 June 2024	PGCerTHS <input type="checkbox"/> MNSc <input type="checkbox"/>	PGDipHS <input type="checkbox"/>	<input type="checkbox"/>	<input type="checkbox"/>
<b>MNSC8.002 Research Paradigms for Nursing Science</b>	TBC	Online	Commences: 19 February to – 27 June 2024	PGCerTHS <input type="checkbox"/> MNSc <input type="checkbox"/>	PGDipHS <input type="checkbox"/>	<input type="checkbox"/>	<input type="checkbox"/>
<b>MNSC8.003 Infectious &amp; Communicable Diseases</b>	TBC	Online	Commences: 19 February to – 27 June 2024	PGCerTHS <input type="checkbox"/> MNSc <input type="checkbox"/>	PGDipHS <input type="checkbox"/>	<input type="checkbox"/>	MHSc <input type="checkbox"/>
<b>MHS8.432 Health Promotion</b>	TBC	Online	Commences: 19 February to – 27 June 2024	PGCerTHS <input type="checkbox"/> MNSc <input type="checkbox"/>	PGDipHS <input type="checkbox"/>	<input type="checkbox"/>	MHSc <input type="checkbox"/>
<b>MHS8.443 Health in Aotearoa New Zealand</b>	TBC	Online	Commences: 19 February to – 27 June 2024	PGCerTHS <input type="checkbox"/> MNSc <input type="checkbox"/>	PGDipHS <input type="checkbox"/>	<input type="checkbox"/>	MHSc <input type="checkbox"/>
<b>PGRM8.100 Applied Research Methods</b>	TBC	Blended/ Online	Commences: Term 1: 12 February – 12 April 2024 (dates subject to change)	<input type="checkbox"/>	PGDipHS <input type="checkbox"/>	<input type="checkbox"/>	<input type="checkbox"/>
<b>PGARR9.500 Applied Research Report</b>	TBC	Blended/ Online	Commences: 19 February to – 27 June 2024	<input type="checkbox"/>	<input type="checkbox"/>	<input type="checkbox"/>	MHSc <input type="checkbox"/>
<b>PGST8.100 Special Topic 1</b>	TBC	Online	Commences: 19 February to – 12 April 2024	<input type="checkbox"/>	PGDipHS <input type="checkbox"/>	<input type="checkbox"/>	MHSc <input type="checkbox"/>
<b>PGST9.100 Special Topic 2</b>	TBC	Online	Commences: 19 February to – 27 June 2024	<input type="checkbox"/>	<input type="checkbox"/>	<input type="checkbox"/>	MHSc <input type="checkbox"/>
<b>MNSC9.001 Critical Inquiry for Nursing Practice</b> (Registered Nurses only)	TBC	Blended/ Online	Commences: 19 February to – 27 June 2024 <b>Compulsory workshop:</b> Tuesday, 20 February 2024 (0900-1530hrs)	MNSc <input type="checkbox"/>	MN <input type="checkbox"/>	<input type="checkbox"/>	<input type="checkbox"/>
<b>MNSC9.002 Research Project</b> (Registered Nurses only)	TBC	Blended/ Online	Commences: 19 February to – 27 June 2024 <b>Compulsory workshop:</b> Wednesday, 21 February.2024	MNSc <input type="checkbox"/>	MN <input type="checkbox"/>	<input type="checkbox"/>	<input type="checkbox"/>
<b>MN9.490 Masterate Research Thesis</b> (Please note this is a 90 credit course) (Registered Nurses only)	TBC	Blended/ Online	Commences: 19 February to 29 November 2024 (Course runs a full academic year, 12 - 18 months) <b>Contact Sessions:</b> Held at EIT Hawke's Bay campus. Dates: TBC	MNSc <input type="checkbox"/>	MN <input type="checkbox"/>	<input type="checkbox"/>	<input type="checkbox"/>



Course selection for: \_\_\_\_\_ (please print your name clearly)

**Semester 2**

Course code and name	Course fee	Delivery method	Dates and other details	Please indicate your course selection from the following Programmes	
<b>MN8.401 Advanced Clinical Assessment &amp; Diagnostic Reasoning</b> (NB: current Annual practising certificate required)	TBC	Blended/ Online	Commences: 22 July to 29 November 2024 <b>Compulsory 2-day contact sessions:</b> Day one, online Thursday, 25 July 2024 Day two, on campus Friday, 26 July 2024	PGCertHS <input type="checkbox"/> MNSC <input type="checkbox"/>	PGDipHS <input type="checkbox"/> MN <input type="checkbox"/>
<b>MN8.402 Advanced Pathophysiology for Health Professionals</b>	TBC	Online	Commences: 22 July to 29 November 2024	PGCertHS <input type="checkbox"/> MNSC <input type="checkbox"/>	PGDipHS <input type="checkbox"/> MN <input type="checkbox"/> MHSc <input type="checkbox"/>
<b>MN8.405 Ethical Concepts and Legal Issue for Advanced Practice</b>	TBC	Online	Commences: 22 July to 29 November 2024	PGCertHS <input type="checkbox"/> MNSC <input type="checkbox"/>	PGDipHS <input type="checkbox"/> MHSc <input type="checkbox"/>
<b>MN8.409 Pharmacotherapeutics for Advanced Nursing/Midwifery Practice</b> (NB: current Annual practising certificate required)	TBC	Online	Commences: 22 July to 29 November 2024	PGCertHS <input type="checkbox"/> MNSC <input type="checkbox"/>	PGDipHS <input type="checkbox"/> MN <input type="checkbox"/>
<b>MN8.410 Advancing Specialty Practice</b>	TBC	Blended/ Online	Commences: 22 July to 29 November 2024 <b>One on-campus study day: TBC</b>	PGCertHS <input type="checkbox"/> MNSC <input type="checkbox"/>	PGDipHS <input type="checkbox"/> MHSc <input type="checkbox"/>
<b>MN8.411 Advanced Practice to Support Elder Health</b>	TBC	Online	Commences: 22 July to 29 November 2024	PGCertHS <input type="checkbox"/> MNSC <input type="checkbox"/>	PGDipHS <input type="checkbox"/> MHSc <input type="checkbox"/>
<b>MN8.424 Registered Nurse Prescribing Practicum</b> (NB: current Annual practising certificate required)	TBC	Blended/ Online	Commences: 22 July to 29 November 2024 <b>Compulsory workshop and online tutorials: TBC</b>	MNSC <input type="checkbox"/>	PGDipHS <input type="checkbox"/> CoP <input type="checkbox"/>
<b>MNSC8.002 Research Paradigms for Nursing Science</b>	TBC	Online	Commences: 22 July to 29 November 2024	PGCertHS <input type="checkbox"/> MNSC <input type="checkbox"/>	PGDipHS <input type="checkbox"/>
<b>MHS8.424 Global Health</b>	TBC	Online	Commences: 22 July to 29 November 2024	PGCertHS <input type="checkbox"/> MNSC <input type="checkbox"/>	PGDipHS <input type="checkbox"/> MHSc <input type="checkbox"/>
<b>PGRM8.100 Applied Research Methods</b>	TBC	Blended/ Online	Commences: Term 3: 22 July – 20 September 2024 (subject to change)		PGDipHS <input type="checkbox"/> MHSc <input type="checkbox"/>
<b>PGARR9.500 Applied Research Report</b>	TBC	Blended/ Online	Commences: 22 July to 29 November 2024		MHSc <input type="checkbox"/>
<b>PGST8.100 Special Topic 1</b>	TBC	Online	Commences: 22 July to 27 September 2024		PGDipHS <input type="checkbox"/> MHSc <input type="checkbox"/>
<b>PGST9.100 Special Topic 2</b>	TBC	Online	Commences: 22 July to 29 November 2024		PGDipHS <input type="checkbox"/> MHSc <input type="checkbox"/>
<b>MNSC9.001 Critical Inquiry for Nursing Practice</b> (Registered Nurses only)	TBC	Blended/ Online	Commences: 22 July to 29 November 2024 <b>Compulsory workshop: Tuesday, 23 July 2024 (0900-1530hrs)</b>	MNSC <input type="checkbox"/>	MN <input type="checkbox"/>
<b>MNSC9.002 Research Project</b> (Registered Nurses only)	TBC	Blended/ Online	Commences: 22 July to 29 November 2024 <b>Compulsory 2-day workshop dates: TBC</b>	MNSC <input type="checkbox"/>	MN <input type="checkbox"/>

**IMPORTANT NOTES**

Blended delivery indicates that face to face sessions may be held on campus regularly or by block course. Online delivery may be web-based or through video conferencing. You will be notified of contact dates and venues prior to your course commencing.

For postgraduate funding and study purposes, each 30 credit course requires 56 contact hours (i.e. equivalent to 8 study days of professional development release time).

**INTERNATIONAL STUDENTS will be advised separately of regularly scheduled face-to-face tutorials. Course fees listed here and delivery method relate to Domestic students only**  
Courses offered are subject to sufficient numbers enrolling and staff availability. Please check with the Programme Administrator for more details. TBC=to be confirmed.



# Master of Health Science

## 2024 postgraduate programmes learning plan

Please complete this form as best you are able to, and return it with your enrolment application.

Applicant name: .....

EIT | Te Pūkenga Student ID: ..... (if applicable)

Area of practice: .....

Geographic location: .....

Employer (if relevant): .....

Date of first enrolment: .....

Please tick the programme you wish to enrol in:

- Postgraduate Certificate in Health Science
- Postgraduate Diploma in Health Science
- Master of Health Science
- Master of Nursing Science
- Master of Nursing

Please tick the study option you wish to enrol in:

- Part-time
- Full-time

Nursing applicants only, are you considering one of the following professional pathways?

- Registered Nurse Prescribing
- Nurse Practitioner

### Intended plan of study

Please complete this section with the courses you intend to enrol into. If you are unsure of what you want to study, please indicate this.

Year	Semester 1	Semester 2
1		
2		
3		
4		
5		
6		

