

For New Zealand Citizens  
& Permanent Residents



## Te Hono ki Toi (Poutiriao) Master of Professional Creative Practice [Level 9]

Te Hono ki Toi (Poutiriao) / Master of Professional Creative Practice is collaboratively offered by EIT's two iconic creative practice schools: ideaschool and Toihoukura. It offers a unique perspective from both the European and Māori creative culture allowing a wide selection of media to be advanced. The programme enables the student to further their creative practice through guided reflection, research and professional practice. Toihoukura off Te Hono ki Toi with a specific matauranga Māori focus.

**Campus** EIT Tairāwhiti, EIT Hawke's Bay - online, compulsory wānanga, and face-to-face

**Starts** February

**Contact** Toihoukura - Steve Gibbs Phone: 06 869 0847. Email: [sgibbs@eit.ac.nz](mailto:sgibbs@eit.ac.nz)  
Toihoukura - Emma Marino Phone: 06 869 3134. Email: [emarino@eit.ac.nz](mailto:emarino@eit.ac.nz)  
Hawke's Bay - Mandy Rudge Phone: 06 830 1362. Email: [mrudge@eit.ac.nz](mailto:mrudge@eit.ac.nz)  
Hawke's Bay - Victoria Nicolle Phone: 06 830 1119. Email: [victoriais@eit.ac.nz](mailto:victoriais@eit.ac.nz)

EASTERN INSTITUTE OF TECHNOLOGY

[eit.ac.nz](http://eit.ac.nz) | 0800 22 55 348 |   

Te Aho a Māui



# Pursue a creative career

Delivery of the programme is "blended" – that is, it is a combination of on-line study, wānanga and research by creative practice. Students may be "based" at either ideaschool or Toihoukura but will have opportunities to engage with staff and students based at both schools and students who may be practicing throughout Aotearoa and indeed the world.

Master of Professional Creative Practice is a 180 credit programme with full-time study for one and 1/2 years at Level 9, consisting of four

compulsory courses that provides the students the opportunity to create a body of creative work to a standard that develops, extends and refines prior professional practices, processes and knowledge. This will be done through research and critical evaluation to strengthen their creative practice while contextualizing their practice in relation to relevant communities, contemporary concepts, models theory, technologies and professional practice management techniques.

## YOUR FUTURE CAREER AND STUDY OPPORTUNITIES

Advancement in creative practice/creative industries; self-employment/entrepreneurship; academic positions in creative practice; gallery owner; curator.

## WHAT YOU NEED TO KNOW

### Te Hono ki Toi (Poutiriao) / Master of Professional Creative Practice

Level	Level 9	Credits	180
Length	18 months full-time or four years part-time	Fee	MPP8.101 and MPP8.102 \$1,840 each (approx) MPP8.200 and MPP9.300 \$3,670 (approx)

This is a guide only based on the previous year. All costs quoted include GST and student services levy. Fees apply to New Zealand citizens and New Zealand permanent residents only.

## KEY DATES

Programme starts	Monday, 18 February	Year ends	Friday, 29 November
------------------	---------------------	-----------	---------------------

## EIT TERM / SEMESTER HOLIDAYS

15 April - 26 April	1 July - 19 July	30 September - 11 October
---------------------	------------------	---------------------------

## WORLD CLASS TEACHING STAFF

The Tertiary Education Commission rates EIT as one of New Zealand's top two institutes of technology and polytechnics for research. Our highly-qualified academics are leaders in their subjects, delivering the most up-to-date and relevant information to certificate, diploma, degree and postgraduate students. Attuned to ever-changing technologies, our tutors bring extensive work experience to teaching EIT's certificate and other industry-tailored programmes.

The Programme Coordinator for the Bachelor of Creative Practice (Honours) Tairāwhiti is Steve Gibbs who has been a practicing Artist / Art Educator since graduating from Ilam School of Fine Arts, Canterbury University for the past 40 years.

### TAIRĀWHITI

Assoc Prof Steve Gibbs	Senior Academic Staff member	Visual Arts/Painter/Scultor
Dr Brett Graham	Academic Staff member	Visual Arts/Sculptor

## TIMETABLE

Your study time will be made up of contact time (class times, tutorials, industry-based learning) and non-contact time (your own individual study time, online learning).

## CONTACT TIME

Full time workload; primarily self directed with Te Hono ki Toi facilitated classes on Tuesdays.

## NON-CONTACT TIME

Students should plan to spend 1464 hours of independent study.

## ENTRY CRITERIA

- ▶ An undergraduate degree in a creative practice with a B average or better; or,
- ▶ B average in a postgraduate qualification (Level 8) in a creative practice field.
- ▶ Where the applicant does not meet the entry criteria above, the applicant may be admitted to Bachelor of Professional Creative Practice (Honours) / Te Hono ki Toi (Poutiri-ā-rangi) [Level 8], and upon successful completion of two courses (B average) from the schedule to the Regulations of Bachelor of Professional Creative Practice (Honours) / Te Hono ki Toi (Poutiri-ā-rangi) [Level 8], gain admission to Master of Professional Creative Practice / Te Hono ki Toi (Poutiriao) [Level 9].

## MĀORI/ENGLISH LANGUAGE REQUIREMENT

Applicants will need to demonstrate fluency, at a level sufficient to academically succeed in the course, in either Te Reo Māori or English.

Applicants who have the language fluency to support it may complete their assessments in Te Reo Māori.

Applicants from countries in which English is not a primary spoken language, who propose to complete their assessments in English, must have an acceptable level of English language fluency prior to enrolment in the programme. This may be demonstrated in a variety of ways, including successful study of a programme in which English was the language of instruction, completion of a New Zealand Certificate in English language (Level 4 Academic), approved scores on IELTS tests (6.0 Academic with no band score lower than 5.5), or completion of either an EIT assessment or accepted international equivalents.

Standard discretionary entrance guidelines will apply.

## COURSE DESCRIPTIONS

- ▶ P=Pre-requisite - courses that must be successfully completed before the next course can be taken.

COURSE NO.	BRIEF DESCRIPTION	NO. OF CREDITS	NZQA LEVEL
<b>MPP8.101</b>	<b>Tiki-Taketake: Critical Reflection and Evaluation of Practice</b> This course enables students, through research and critical reflection, to strengthen their creative professional practice. Students will contextualise their practice in relation to relevant communities, contemporary concepts, models, theory, technologies and professional practice management techniques.	30	8
<b>MPP8.102</b>	<b>Tiki-Tohua: Proposal - P: MPP8.101</b> This course enables students to develop a proposal for a body of professional creative work, based on in-depth and broad research that they can implement in MPP8.200 Creative Professional Project 1.	30	8
<b>MPP8.200</b>	<b>Tiki-Kapakapa: Creative Professional Project 1 - P:MPP8.102</b> This course enables students to implement the proposal they created in MPP8.102 by creating an effective and professional body of creative work, making it publically available and speaking professionally about that work.	60	8
<b>MPP9.300</b>	<b>Tiki-Whakaea Ki Te Ao Mārama: Creative Professional Project 2 - P:MPP8.200</b> This course enables students to create a body of creative work that develops, extends and refines prior professional practices, processes and knowledge.	60	9

## TRANSFERS/CROSS CREDITS

Applicants may be admitted with credit transfer or Recognition of Prior Learning.

The Postgraduate Programmes Cluster Committee shall have discretion in the granting of academic credit.

Academic credit may be awarded as:

- ▶ Recognition of prior learning (RPL) at Level 8 and/or Cross Credit of course(s) (specified credit) at NZQA Level 8 which are relevant to Bachelor of Professional Creative Practice (Honours) / Te Hono ki Toi (Poutiri-ā-rangi) [Level 8] and Master of Professional Creative Practice / Te Hono ki Toi (Poutiriao) [Level 9].
- ▶ The Postgraduate Programmes Cluster Committee may grant credit, however, credit granted shall not be for courses completed as part of an undergraduate degree.
- ▶ Persons with a relevant postgraduate qualification, equivalent to NZQA Level 8 may be admitted to the Master of Professional Creative Practice/ Te Hono ki Toi (Poutiriao) [Level 9], (MPCP) programme. Credit towards the MPCP up to a maximum of 120 credits may be granted.
- ▶ No credits at Level 9 may be awarded on the basis of previous study.
- ▶ Where the applicant did not previously meet the MPCP entry criteria and has successfully completed the EIT Bachelor of Professional Creative Practice (Honours) / Te Hono ki Toi (Poutiri-ā-rangi) [Level 8] up to 120 credits towards the MPCP may be approved. Normally such credit will be granted where the applicant has achieved not less than a B in the course(s) for which credit is applied.

## FACILITIES

Students on both campuses have full-time access to the Te Hono ki Toi Presentation / Communication room. They can work in provided studio spaces or use their own studio.

Extensive studios and workshops on either campus can be accessed on an 'as available' basis, after health and safety clearance.

## ASSESSMENTS

Assessments may include presentation, documentation of the creative process including research and critical evaluation, group activities, creative research proposals and creative bodies of work.

## BLENDED LEARNING

Lecturers are available to students via the EIT on-line courses sites, virtual classrooms, video conference, skype, face-to-face classes.

## TECHNOLOGY SUPPORT

Students need to have a computer with internet access.

## THE EXPERIENCE YOU NEED & THE SUPPORT TO SUCCEED

When you study at EIT you'll get the kind of experiences that will help you gain the knowledge and skills to get ahead.

You'll also be supported by lecturers and tutors who are here for you, within a learning environment where you are treated as an individual, not just a number. They'll know your name and you'll receive one-on-one attention to make sure you get the support to succeed.

# ENROLMENT INFORMATION

## HOW TO ENROL

### STEP 1

Complete the enrolment form that is included with this info pack or apply online [www.eit.ac.nz](http://www.eit.ac.nz)

You can apply to StudyLink now if you need help to pay your fees, course related costs or living costs. You can do this even if you haven't been accepted on to your programme yet.

Visit [www.studylink.govt.nz](http://www.studylink.govt.nz) to apply.

### STEP 2

If you apply online you will be sent a form to check, sign and return to EIT along with any required supporting documents.

If you are applying by paper enrolment form, you will need to complete this and send back to EIT with any required supporting documents.

### STEP 3

You will receive an acceptance letter with programme information including your start date.

You may also receive course selection forms. You need to complete these quickly and return them to us so we can finalise your enrolment. If you do not send these back to us we are not able to give Studylink the information they need to finalise your student finance.

### STEP 4

You will receive an invoice with payment details.

You must arrange for full payment of your enrolment fees before the start of your programme.

Contact us if you have any questions.

## SCHOLARSHIPS AND GRANTS

Scholarships and grants make life easier by helping to cover your fees, other costs and living expenses while you study. You don't always need to be an academic high-flyer to qualify.

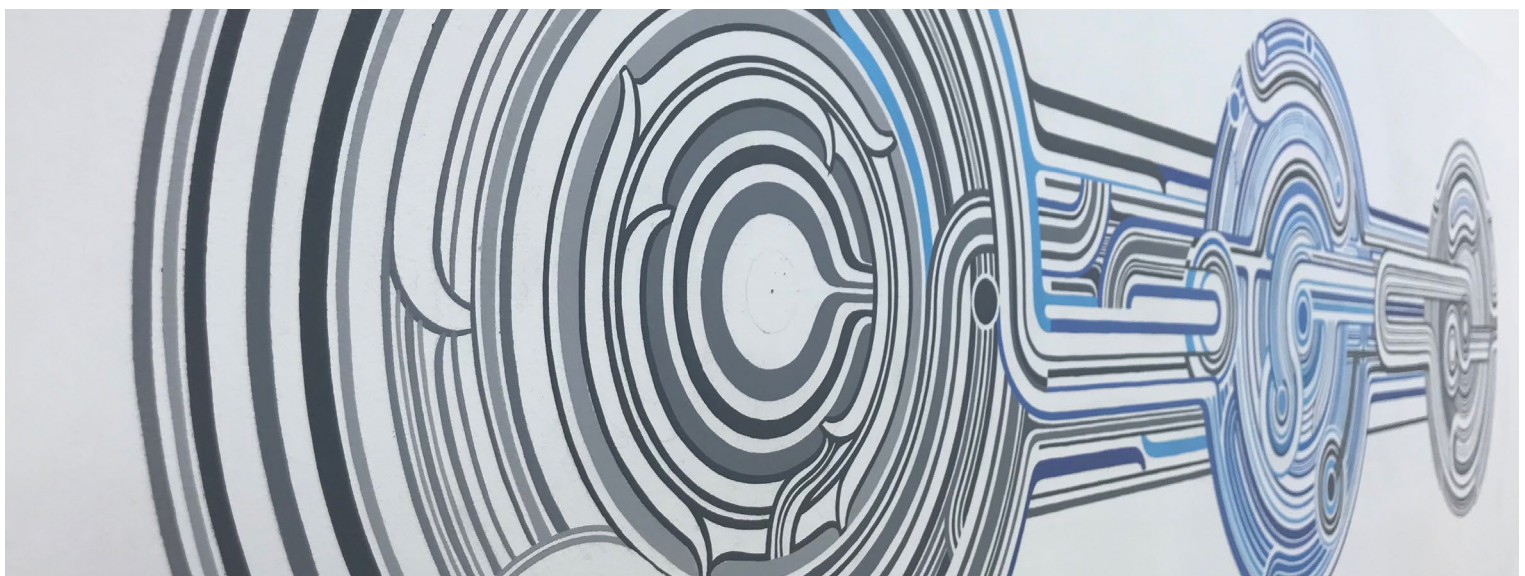
EIT has a long list of scholarships for which you can apply. So if you would like to get financial help with your study, take a look at our website to see what's available. You can also take a look online at the [givME](http://givME) database available at EIT. It lists every scholarship and grant available in New Zealand.

## STUDENT SERVICES LEVY

The Student Services Levy is a compulsory non-tuition fee that is charged to students enrolled at EIT. The levy is to contribute to the provision of quality student services that support learning. The funds received by EIT from the levy are ring-fenced, meaning they can only be spent on student services.

## STUDENT LOANS AND ALLOWANCES

StudyLink is a service of the Ministry of Social Development. Apply well before your programme begins (even if you haven't been accepted yet) so you'll be ready to get your payments when you need them most. Check out [studylink.govt.nz](http://studylink.govt.nz) or phone 0800 88 99 00. A Student Allowance is a weekly payment to help you with living expenses. It doesn't have to be paid back. A Student Loan is made up of three parts – compulsory fees, course-related costs and living costs. You have to pay these back.



THE EXPERIENCE YOU NEED  
& THE SUPPORT TO SUCCEED



EASTERN INSTITUTE OF TECHNOLOGY