

# Te Hono ki Toi (Poutiriao / Poutiritāeo)

## Master of Professional Creative Practice

Two programme options available to choose from:

- ▶ 180 credit programme (18 months full-time)
- ▶ 240 credit programme (2 years full-time)\*



Te Hono ki Toi (Poutiriao / Poutiritāeo) | Master of Professional Creative Practice is collaboratively offered by the EIT | Te Pūkenga two iconic creative practice schools: Toihoukura and IDEAschool. It offers a unique perspective from both the European and Māori creative culture allowing a wide selection of media to be advanced. The programme enables you to further your creative practice through guided reflection, research and professional practice.

Toihoukura offer Te Hono ki Toi (Poutiriao / Poutiritāeo) with a specific matakauranga Māori focus. The programme is delivered online, through compulsory wānanga, and face-to-face.

<b>LOCATION</b>	Toihoukura (Tairāwhiti) and IDEAschool (Hawke's Bay - see separate Application Pack)
<b>START</b>	February
<b>LENGTH</b>	18 or 24 months full-time (depending upon qualification chosen)**
<b>CONTACT</b>	Emma Marino   Phone: 06 869 0847   Email: <a href="mailto:toihou@eit.ac.nz">toihou@eit.ac.nz</a>

\* 240 credit programme subject to approval and accreditation.

\*\* Part-time study available.



TE AHO A MĀUI



Te Pūkenga

For NZ Citizens and Permanent Residents

EASTERN INSTITUTE OF TECHNOLOGY

[eit.ac.nz](http://eit.ac.nz) | 0800 22 55 348 | [f](#) [@](#) [in](#)

# Cement your creative career

Delivery of Te Hono ki Toi (Poutiriao / Poutiritāeo) is “blended”, meaning it is a combination of online study, wānanga and research by creative practice.

You may be “based” at either Toihoukura or IDEAschool but will have opportunities to engage with staff and students based at both schools and students who may be practicing throughout Aotearoa and indeed the world.

Te Hono ki Toi (Poutiriao / Poutiritāeo) is a Level 9 programme of 180 or 240 credits with full-time study for up to two years. The programme

consists of four compulsory courses that provide you with the opportunity to create a body of creative work to a standard that develops, extends and refines prior professional practices, processes and knowledge.

This will be done through research and critical evaluation to strengthen your creative practice while contextualizing your practice in relation to relevant communities, contemporary concepts, models theory, technologies and professional practice management techniques.

## YOUR FUTURE CAREER OPPORTUNITIES

Advancement in creative practice/creative industries; self-employment/entrepreneurship; academic positions in creative practice; gallery owner; curator.

## WHAT YOU NEED TO KNOW

[Te Hono ki Toi \(Poutiriao\) | Master of Professional Creative Practice](#)

[Te Hono ki Toi \(Poutiritāeo\) | Master of Professional Creative Practice](#)

<b>LEVEL</b>	9	<b>CREDITS</b>	180 or 240
<b>LENGTH</b>	18 or 24 months full-time (depending upon qualification chosen)	<b>FEE*</b>	\$7,600 approximately per year

\* This is a guide only based on the previous year. All costs quoted include GST and student services levy. Fees apply to New Zealand citizens and New Zealand permanent residents only.

**Please note:** It takes 18 months to do Te Hono ki Toi (Poutiriao) 180 credit programme after completing a Bachelor's degree in a creative practice or 6 months (60 credits) to do this programme after completing an Honours Bachelor's degree in a creative arts field. It takes 24 months to do Te Hono ki Toi (Poutiritāeo) 240 credit programme after completing a Bachelor's degree in a creative practice or 12 months (120 credits) to do this programme after completing an Honours Bachelor's degree in a creative arts field.

## KEY DATES

### PROGRAMME STARTS

Monday, 13 February

### YEAR ENDS

Friday, 24 November

### SEMESTER HOLIDAYS

10 April - 21 April

26 June - 14 July

25 September - 6 October

## TIMETABLE

Your study time will be made up of contact time (class times, tutorials, industry-based learning) and non-contact time (your own individually-directed time, online learning).

### Contact Time

On-campus classes operate in wānanga mode at Toihoukura and are scheduled between 1.00pm - 3.00pm (Poutiriao) or 1.00pm - 4.00pm (Poutiritāeo) on Tuesdays at IDEAschool.

### Non-contact Time

You should plan to spend 28.7 hours of individual-directed time per week.

## ENTRY CRITERIA

- ▶ An NZQF-listed Bachelor's or higher level degree (or equivalent) in a creative practice field with a minimum of the equivalent to a B average as per the EIT | Te Pūkenga-specified 11-point achievement-based grading system; or
- ▶ In the absence of the above, provisional admission on the basis of an evaluation of a portfolio of work; or
- ▶ At the Dean's discretion, where an applicant's situation is compelling but not covered by the requirements listed above.

## MĀORI/ENGLISH LANGUAGE ENTRY REQUIREMENTS

Applicants will need to demonstrate fluency, at a level sufficient to academically succeed in the course, in either Te Reo Māori or English.

Applicants who have the language fluency to support it may complete their assessments in Te Reo Māori.

Applicants from countries in which English is not the primary spoken language must demonstrate an acceptable level of English language fluency prior to acceptance in the programme. Ways in which English language fluency may be demonstrated include (i) completion of a programme of study in which English was the language of instruction (conditions apply\*), and (ii) approved scores on IELTS tests, namely an Academic score of 6.5 with no band lower than 6 (or accepted international equivalents).

Standard discretionary entrance guidelines will apply.

## ENTRY WITH CREDIT

Applicants may be admitted with credit transfer or recognition of prior learning.

The Postgraduate Programmes Cluster Committee shall have discretion in the granting of academic credit.

For more information on entry with credit please contact the Programme Administrator, Emma Marino on 06 869 0847 or [toihou@eit.ac.nz](mailto:toihou@eit.ac.nz).

## BLENDED LEARNING

Lecturers are available to students via the EIT | Te Pūkenga on-line courses sites, virtual classrooms, video conference, Zoom, face-to-face classes.

## TECHNOLOGY SUPPORT

You need to have a computer with internet access.

## FACILITIES

Students on both campuses have full-time access to Te Hono ki Toi Presentation / Communication room. You can work in provided studio spaces or use your own studio.

Extensive studios and workshops on either campus can be accessed on an 'as available' basis, after health and safety clearance.

## ASSESSMENTS

Assessments may include presentations, documentation of the creative process including research and critical evaluation, group activities, creative research proposals and creative bodies of work.

## EIT IS NOW PART OF TE PŪKENGA

Te Pūkenga will bring together New Zealand's Institutes of Technology, Polytechnics, and Industry Training Organisations to build a network of on job, on campus and online

learning. The services we offer will not only remain, they will be strengthened by being part of the extensive Te Pūkenga network around the country. Your enrolment for study in 2023 will see you enrolling with Te Pūkenga and becoming part of the extensive Te Pūkenga network around the country.

## THE EXPERIENCE YOU NEED & THE SUPPORT TO SUCCEED

When you study at EIT | Te Pūkenga you'll get the kind of experiences that will help you gain the knowledge and skills to get ahead.

You'll also be supported by lecturers and tutors who are here for you, within a learning environment where you are treated as an individual, not just a number. They'll know your name and you'll receive one-on-one attention to make sure you get the support to succeed.

## EXPERIENCED LECTURERS

At EIT | Te Pūkenga, you can be confident in the quality of our teaching and your learning experience.

EIT | Te Pūkenga is highly regarded in New Zealand for research excellence due to the quality of our community centred research, our publications and our external grant income provided by funding institutions who have confidence in our research capability. You can be confident your lecturers use the latest knowledge and research in their field of expertise to inform their teaching, and many are at the forefront of knowledge creation within their discipline area.

The Programme Coordinator for the Te Hono ki Toi (Poutiriao / Poutiritāeo) at Toihoukura in Tairāwhiti is Associate Professor Steve Gibbs who has been a practicing Artist / Art Educator, since graduating from Ilam School of Fine Arts, Canterbury University for the past 40 years.

The remaining teaching staff bring generalised knowledge of visual arts and design theory and practice, with specialised knowledge in particular media areas. A list of current staff members is outlined below.

NAME	POSITION	CREATIVE FIELD
<b>Toihoukura / TAIRĀWHITI</b>		
Associate Professor Steve Gibbs	Programme Coordinator (Tairāwhiti)	Visual Arts / Painter / Sculptor
Tawera Tahuri	Academic Staff member	
Emma Marino	Programme Administrator	Raranga / Graphic Design
<b>IDEAschool / HAWKE'S BAY</b>		
TBC	Programme Coordinator (Hawke's Bay)	
Dr Bridget Sutherland	Academic Staff member	Visual Arts and Design / Moving Image
Dr Mazin Bahho	Senior Academic Staff member	Design / Spatial
Peter Baker	Academic Staff member	Visual Arts / 3D Design
Wellesley Binding	Senior Academic Staff member	Visual Arts / Painting
Anthony Chiappin	Academic Staff member	Design / Graphics and Illustration
Michael Hawsworth	Academic Staff member	Visual Arts / Drawing / Digital Media
Chris Bryant-Toi	Academic Staff member	Whakairo / Visual Arts
Tom Pierard	Academic Staff member	Music
Cheryl Downie	Discipline Leader	Fashion
Gianluca Castaldo	Academic Staff member	Screen Production
Tessa Tylee	Academic Staff member	Screen Production
Irina Konig	Programme Administrator	



# How to Enrol

There is an easy 3-step process to follow when enrolling at EIT.

## Step 1

Check out the programmes online at [eit.ac.nz](http://eit.ac.nz) to see the programmes available for you to study. A copy of the course information for each programme is available online.

## Step 2

You can now use your RealMe verified identity to apply for study at EIT. If you use your RealMe verified identity you will no longer be sent a copy of your application form to sign. You also will not need to provide us with a copy of your primary ID.

If you apply online without using RealMe then you will be sent a summary of your enrolment to check and sign. It will also include course selection forms which you need to complete and return. Your enrolment cannot progress until you have sent the summary and forms back to us.

You can also apply using a paper enrolment form. Please call us on **0800 22 55 348** and we will send you one out.

You will receive an acceptance letter from your Faculty with programme information. This will include the start date of your

study and any special information regarding your programme. Depending on your chosen programme of study, you may be invited to attend an interview before you are accepted.

## Step 3

Arrangement for full payment of enrolment fees must be made before the start of your programme. You will receive an invoice with payment details.

**Fees-Free government scheme:** Tertiary education is fees-free for eligible domestic tertiary students. To check if you are eligible, go to [FeesFree.govt.nz](http://FeesFree.govt.nz) and enter your National Student Number (NSN). If you are not eligible you will be responsible for paying your fees.

**Scholarships and grants:** Scholarships and grants make life easier by helping to cover your fees, other costs and living expenses while you study. You don't always need to be an academic high-flyer to qualify. You can find out more about scholarships and other options for paying your fees at [eit.ac.nz](http://eit.ac.nz).

**StudyLink:** If you need to pay for your own study you can choose to apply for your Student Loan and Student Allowance with StudyLink. You should do this early, even if you haven't yet been accepted on your programme. You can change your details later if anything changes. Visit [studylink.govt.nz](http://studylink.govt.nz) to find out more about StudyLink.

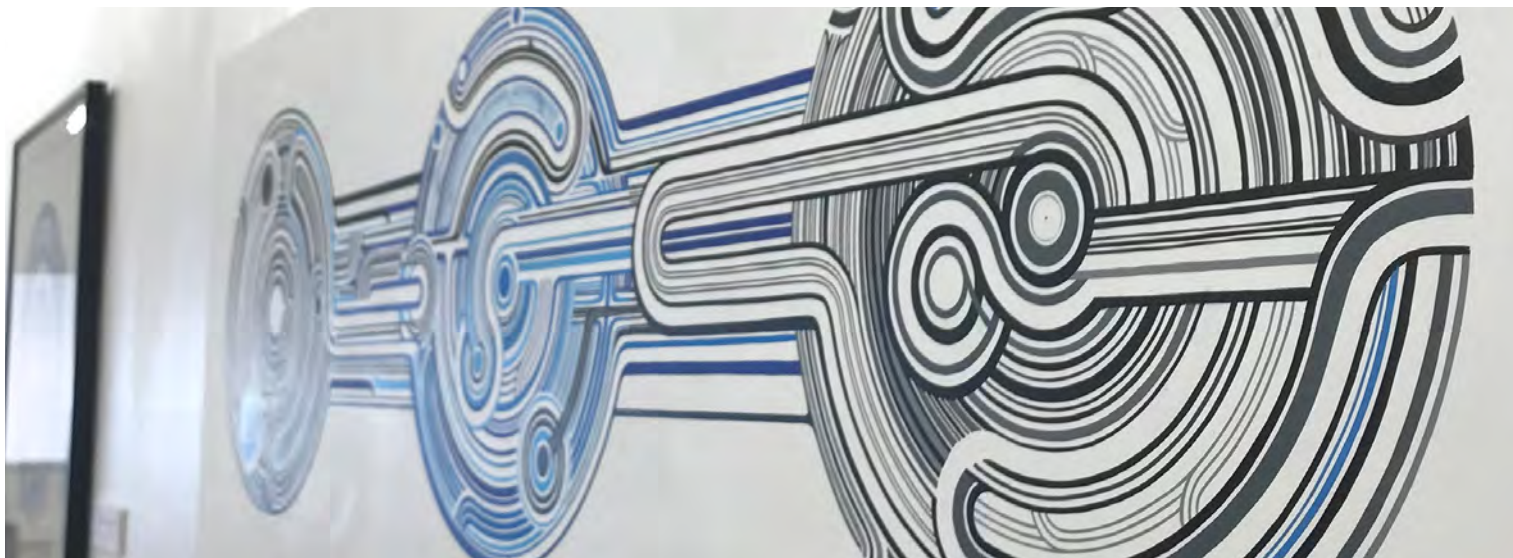
## Student Services Levy

The Student Services Levy is a compulsory non-tuition fee that is charged to students enrolled at EIT. The levy is to contribute to the provision of quality student services that support learning. The funds received by EIT from the levy are ring-fenced, meaning they can only be spent on student services.

## Student Loans and Allowances

StudyLink is a service of the Ministry of Social Development. Apply well before your programme begins (even if you haven't been accepted yet) so you'll be ready to get your payments when you need them most.

Check out what you qualify for at [studylink.govt.nz](http://studylink.govt.nz).



## EIT is now part of Te Pūkenga

Te Pūkenga will bring together New Zealand's Institutes of Technology, Polytechnics, and Industry Training Organisations to build a network of on job, on campus and online learning. The services we offer will not only remain, they will be strengthened by being part of the extensive Te Pūkenga network around the country. Your enrolment for study in 2023 will see you enrolling with Te Pūkenga and becoming part of the extensive Te Pūkenga network around the country.



## COURSE DESCRIPTIONS

► Pre-requisite = courses that must be successfully completed before the next course can be taken.

COURSE NO.	BRIEF DESCRIPTION	NO. OF CREDITS	NZQA LEVEL	YEAR / TERM OFFERED
MPCP8.101	<p><b>Tiki-Taketake: Critical Reflection and Evaluation of Practice</b></p> <p>This course enables students, through research and critical reflection, to strengthen their creative professional practice. Students will contextualise their practice in relation to relevant communities, contemporary concepts, models, theory, technologies and professional practice management techniques.</p>	30	8	Year 1 Term 1
MPCP8.102	<p><b>Tiki-Tohua: Proposal</b></p> <p>This course enables students to develop a proposal for a body of professional creative work, based on in-depth and broad research that they can implement in MPCP8.200 Creative Professional Project 1.</p> <p><i>Pre-requisite:</i> MPCP8.101</p>	30	8	Year 1 Term 2
MPCP8.200	<p><b>Tiki-Kapakapa: Creative Professional Project 1</b></p> <p>This course enables students to implement the proposal they created in MPCP8.102 by creating an effective and professional body of creative work, making it publicly available and speaking professionally about that work.</p> <p><i>Pre-requisite:</i> MPCP8.102</p>	60	8	Year 1 Term 3 & 4
MPCP9.300	<p><b>Tiki-Whakaea ki te Ao Mārama: Creative Professional Project 2</b></p> <p>This course enables students to create a body of creative work that develops, extends and refines prior professional practices, processes and knowledge.</p> <p><i>Pre-requisite:</i> MPCP8.200</p>	60	8	Year 2 Term 1 & 2
MPCP9.400	<p><b>Tiki-Whakaea ki te Ao Mārama: Creative Professional Project 3</b></p> <p>This course enables students to further develop new understanding, new advanced knowledge and perspectives required of a professional creative performing at an advanced level.</p> <p><i>Pre-requisite:</i> MPCP8.200</p>	120	9	Year 2 Full Year

