

TE AHO A MĀUI

RĀRANGI AKORANGA

PROSPECTUS

2027



© Eastern Institute of Technology

Disclaimer: All information in this publication pertains to New Zealand Citizens or Permanent Residents, and is correct at the time of printing but is subject to change.

EIT reserves the right to amend/withdraw programmes or courses.

Fees for 2027 will be set by November 2026 and are subject to change. For the latest information, or for full programme entry requirements visit eit.ac.nz or phone 0800 22 55 348.

Cover photo:

From Left: **Joe Tangira** NZ Certificate in Exercise (Level 4) Student, **Natalya Williams** Bachelor of Social Work Graduate, **Caleb Nant** NZ Certificate in Automotive Engineering (Level 4) Student, **Nathanael Elliott** Bachelor of Social Work Student and **Ami Hokianga** Bachelor of Social Work Graduate

Inside cover photo:

From Left: **Quinn Sidney** Bachelor of Nursing Student, **Natalya Williams** Bachelor of Social Work Graduate and **Nathanael Elliott** Bachelor of Social Work Student



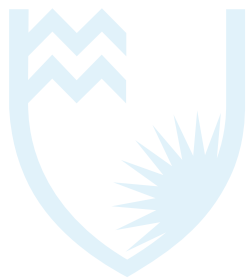


CONTENTS

Ngā Kiko o Roto

School Leaver Scholarships <i>Karahipi Ākonga Wehekura</i>	1
Welcome <i>Whakataua</i>	2
How to Enrol <i>Me Pēhea te Whakauru Mai</i>	3
Campuses Built For Your Needs <i>Papa Mātauranga Hāngai ki Ō Ingoingo</i>	4
Student Support <i>Te Tautoko Ākonga</i>	5
What Should I Study? <i>Me Ako Au i te Aha?</i>	9
Understanding Qualifications <i>Te Whai Māramatanga ki Ngā Tohu</i>	10
Animal Management and Veterinary Nursing <i>Te Tiekī me te Tapuhi Kararehe</i>	11
Beauty <i>Te Whakarākei</i>	12
Business <i>Te Pakihi</i>	13
Computing <i>Te Mahi Rorohiko</i>	14
English Language <i>Te Reo Pākehā</i>	15
Hairdressing and Barbering <i>Te Kutikuti Makawe</i>	16
Health and Sport Science <i>Te Hauora me te Mātai Hākinakina</i>	17
Hospitality <i>Te Manaaki Tangata</i>	19
Creative Practice <i>Te Hanga Mahi Auaha</i>	20
Māori Studies <i>Te Ao Māori</i>	21
Nursing and Health Science <i>Te Tapuhi me te Mātai Hauora</i>	22
Primary Industries <i>Te Ahumahi Mātāmua</i>	23
Social Work <i>Te Mahi Pāpori</i>	25
Teaching <i>Te Whakaakoako</i>	26
Toi Houkura <i>Creative Māori Arts</i>	27
Tourism and Travel <i>Te Tāpoi me te Tipiwhenua</i>	28
Trades and Technology <i>Te Ringarehe me te Hangarau</i>	29
Viticulture and Wine Science <i>Te Mātai Wāina</i>	31
Postgraduate Study <i>Akoranga Tohu Paerunga</i>	32

NEW
FOR 2027



SCHOOL LEAVER SCHOLARSHIPS

Karahipi Ākonga Wehekura

Applications open Wednesday, 1 July 2026

EIT is proud to support local school leavers who are passionate about their community and committed to shaping the future of our region.

Apply for one of ten \$5,000 School Leavers Scholarships for degree study at EIT Hawke's Bay or Tairāwhiti.

We're looking for students who:

- Are actively involved in their community – through volunteering, church, cultural groups, sport, youth leadership or service
- Are already contributing and keen to keep giving back
- Have a genuine love for our region and a desire to see it thrive
- Show commitment, initiative and community spirit alongside their studies

If you're a local school leaver who believes in staying connected, supporting others, and making a difference close to home, this scholarship is for you.

Love local? So do we!

Because strong communities grow from local people who care.



WELCOME

WHAKATAU

Nau mai! Haere mai! Welcome to EIT. Thinking about study can bring excitement, questions, and uncertainty, but you don't have to navigate it alone. At EIT, learning is about more than gaining a qualification, it's about building confidence, growing your skills, and preparing for what comes next. Whether you're taking your first step into study, returning after a break, or changing direction, you'll find a place where you're supported and encouraged to succeed.

From day one, you'll be part of a friendly, welcoming learning community. Our lecturers and tutors are experienced professionals who bring real-world insight into the classroom and take the time to get to know you, your goals, and how you learn best. With EIT's strong connections to industry across New Zealand, your learning stays relevant, practical, and focused on your future.

Many of our programmes include hands-on learning and real-world experience, so you can put theory into practice, develop practical skills, and start building industry connections while you study. These experiences can make a real difference as you move towards employment.

You can study at our modern, well-equipped campuses, regional learning centres, or pop-up locations, with flexible options including full-time, part-time, and online study. We also offer scholarships and free programme opportunities to help make study more accessible.

Most importantly, at EIT, you're not just a number. You'll learn in supportive, right-sized classes where your success genuinely matters. From planning your study right through to preparing for work after graduation, we're here to help every step of the way.

If you're ready to invest in your future, we'd love to welcome you to EIT.



HOW TO ENROL

Me Pēhea te Whakauru Mai

There is an easy 3-step process to follow when enrolling at EIT

01

Find Your Programme

Go online to eit.ac.nz to see the programmes available for you to study at EIT. Once you find a programme you are interested in, you can download course information to find out more.

02

Apply Online

Applying online at eit.ac.nz is the quickest way to apply to study at EIT. Once you have submitted your application we will let you know if we need a copy of your primary ID or any further documentation from you.

Apply Using RealMe

You can use your *RealMe* verified identity to apply for study at EIT. If you use your *RealMe* verified identity you won't need to provide us a copy of your primary ID (unless you are on a visa from Immigration NZ to be in New Zealand).

Applying by post

You can also apply using a paper enrolment form. Please email us at info@eit.ac.nz and we will send one out to you.

Applying in person

You can return your enrolment form with any additional documentation and your identification to any of EIT's Regional Learning Centres, or at the Hawke's Bay or Tairāwhiti Campus.

Next Steps

Once your application has been processed, you will be contacted by your programme's administrative team.

They will provide you with programme information including the start date of your study and any special information regarding your programme. You may also be sent course selection forms which you need to complete and return to us. Depending on your chosen programme of study, you may be invited to attend an interview before you are fully enrolled.

03

Arrange Payment

Full payment of enrolment fees must be arranged before the start of your programme. You will receive an invoice with payment details.

Scholarships

There is information about a range of scholarships on our website eit.ac.nz/students/scholarships.

Student Loans and Allowances

If you need to pay for your own study you can choose to apply for a Student Loan and/or Student Allowance with StudyLink. StudyLink is a service of the Ministry of Social Development.

Apply well before your programme begins (even if you haven't been accepted yet) so you will be ready to get your payments when you need them most. Check out what you qualify for at studylink.govt.nz.

Student Services Levy

The Student Services Levy is a compulsory, non-tuition fee that is charged to students enrolled at EIT. The levy is to contribute to the provision of quality student services that support learning.

The funds received by EIT from the levy are ring-fenced, meaning they can only be spent on student services.

CAMPUSES BUILT FOR YOUR NEEDS

Papa Mātauranga Hāngai ki Ō Ingoingo

EIT offers qualifications from certificate through to postgraduate level, with campuses in Hawke's Bay, Tairāwhiti (Gisborne), and Auckland (international students only). You can also study closer to home at one of our Regional Learning Centres in Hastings, Maraenui, Ruatoria, Waipukurau, and Wairoa, as well as other pop-up learning centres across the region.

Our post-Cyclone Gabrielle rebuild is nearing completion and our ground-level buildings have been refreshed. This redevelopment has allowed us to rethink the Taradale campus to better meet the needs of today's learners through more flexible, modern learning spaces.

EIT Tairāwhiti and our Rural Studies Unit are centrally located in the heart of Gisborne near the Taruheru River, while EIT Auckland is ideally positioned on Queen Street.

Our Regional Learning Centres are conveniently located, easy to access, and close to public transport where possible. Each centre is tailored to support the needs of both students and staff, providing welcoming and practical learning environments.

Across our campuses, you'll find high-quality facilities purpose-built for EIT programmes, including high-tech trades workshops, professional-standard training kitchens, and fully equipped wine science and viticulture laboratories.

Students benefit from free campus-wide Wi-Fi and access to professional printing services through our fully equipped reprographics team, which offers everything from large-format printing to document binding — all at affordable student-friendly prices.

When it's time to take a break, enjoy our lively campus cafés and student training cafés, perfect for catching up with friends over coffee or lunch in a relaxed, social setting.

Accommodation while you study

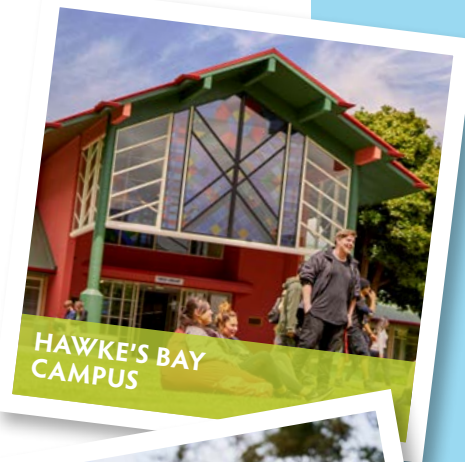
Accommodation is available at the EIT Student Village, located directly opposite the Hawke's Bay Campus.

The Student Village is a self-catered complex made up of 12 villas, each shared by six students. New Zealand and international students live together in a mixed-gender environment, creating a friendly and inclusive community. Each student has their own furnished bedroom and shares comfortable communal spaces, including a lounge, kitchen, dining area, laundry, and bathroom facilities.

Rooms are in high demand and fill quickly, so we recommend enquiring early.

Contact:

accommodation@eit.ac.nz or download an application form at eit.ac.nz/students/student-accommodation.



STUDENT SUPPORT

Te Tautoko Ākonga

Starting your studies at EIT may be your first time away from home, or your first experience of studying at this level. It can all feel a bit new and that's completely normal. With study taking up much of your time, you might need support with other aspects of life as well.

To help you get the most out of your time at EIT, we offer a wide range of student support services. Whether you need help choosing the right subjects, planning your study, or getting guidance on the best pathway into your chosen career, there's always someone available to help.

Te Pae Hono is EIT's student support hub, conveniently located in the heart of Hawke's Bay Campus in Taradale.

In Te Tairāwhiti, the Ākonga Support Services are the first faces you see as you enter the Tairāwhiti Campus, with services located between the main reception and library spaces.

This is your go-to place for support, whether you need to book a study room, access advice and services, or simply take a break, relax, and enjoy a cuppa. Here, you'll find disability and cultural support services, the MPTT training scheme, Youth Guarantee, and StudyLink services.

You'll also have access to personal, one-on-one support from friendly, experienced staff who are dedicated to helping students succeed. They're on campus to provide advice, information, and guidance whenever you need it.

We want your time at EIT to be exciting, productive, and successful, so be sure to make the most of the support available to you.



As a student at EIT, you can get support to help you focus on what really matters – your studies and your future.

Academic Learning Services

You can get help and advice with all aspects of your study, from developing study skills and planning your time, to writing assignments, academic writing, computing, and maths support.

Child Care

Otātara Children's Centre at EIT Hawke's Bay and Manaaki Tamariki Childcare Centre at EIT Tairāwhiti are available, giving you peace of mind that your children are in safe hands while you study. Bookings are essential.

Disability Support

Support is available for students with physical, sensory, intellectual, and learning disabilities — including dyslexia, dyspraxia, and other neurodiversities — as well as mental health conditions. Our services are designed to provide equitable opportunities and are available to students with both permanent and temporary disabilities or health conditions, including those recovering from injury or surgery.

Support is tailored to your individual needs and may include information and advice, assistive technology solutions, and alternative arrangements for tests and examinations.

At the Hawke's Bay Campus, students can also connect with our disability peer support group, Te Rōpū Āwhina, which meets regularly to share kai, connection, and wellbeing in a supportive environment.

For more information or to access support:
Hawke's Bay Campus: (06) 974 8000
Tairāwhiti Campus: (06) 869 0810



WHAT SHOULD I STUDY?

Me Ako Au i te Aha?

Deciding what to study can be a bit overwhelming and we understand that choosing the right programme isn't always easy. Choosing between a certificate, diploma, degree or even postgraduate study - the decision can be a little daunting.

We are here to help though, our Engagement Team is available to talk you, to provide guidance on entry requirements and support when working through the application process.

You may have already seen us out and about as our Engagement Team connects with schools, community organisations and other social agencies to showcase EIT and the many programmes we have available.

We can:

- Arrange a campus tour for you
- Connect you with the right person for programme specific queries
- Introduce you to the Student Support Team
- Refer you to potential scholarship opportunities

If you would like more information or help please scan the QR code or email engagement@eit.ac.nz.



 **SCAN ME**

For more information or help deciding what to study.



From Left: **Cameron Akuhata** Engagement Advisor (Tairāwhiti), **Leanne Harkness** Events and Engagement Manager, **Josie Morris and Analeah Taufale** Engagement Advisors (Hawke's Bay)

We're here to make things clearer

You'll find straightforward explanations of how qualifications work, what the levels mean, and how they can help you reach your study or career goals. Whether you're beginning your journey or figuring out your next move, you don't have to navigate it alone.

Programmes and Courses

A programme results in a qualification and consists of a number of courses. Some programmes consist of compulsory courses while others have a selection of elective courses or a combination of both compulsory and elective courses.

Credits

Courses consist of credits, and when a course is successfully completed, the credits will be counted towards the qualification. One credit usually equals 10-12 hours of learning.

Levels

Levels indicate the depth of knowledge and complexity of skills required. The higher the level, the more complex the concepts and skill-sets. In New Zealand, the levels progress from Level 1 to Level 10.

Entry Criteria

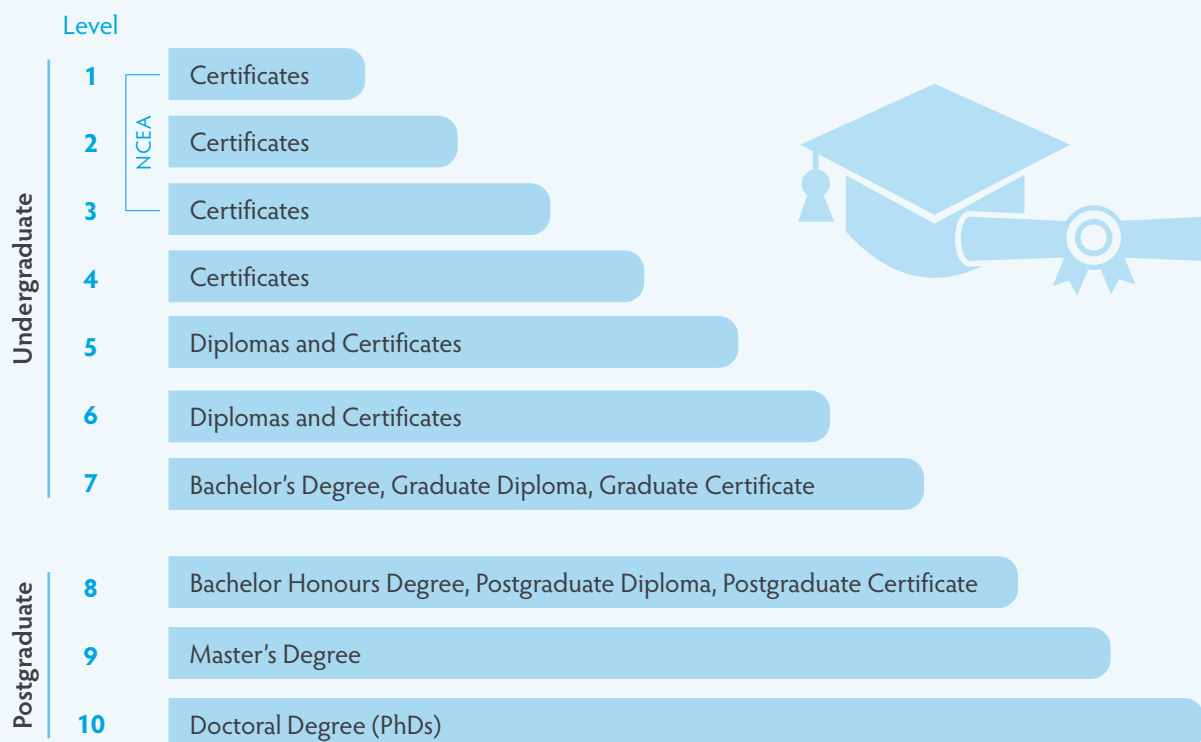
See below for general entry criteria, however most programmes have further entry requirements. Please check the specific entry criteria in the relevant programme information at eit.ac.nz.

Short Courses

Do not generally result in formal qualifications.

UNDERSTANDING QUALIFICATIONS

Te Whai Māramatanga ki Ngā Tohu



Credentials	Level	Credits	Duration*	Entry Criteria
Certificate: Provides an introduction to a subject and may be a pathway to higher level study. (Level 1-3 are equal to NCEA level 1-3)	1-4	60-120	6 months-1 year	Most are open entry
Diploma	4-6	120-240	1-2 years	NCEA Level 2 or Level 3
Bachelor's Degree	7	360	3-4 years	University Entrance
Graduate Certificate, Graduate Diploma: This allows a degree graduate to study further courses at the same level as their degree but in a different or additional specialisation.	7	60 120	6 months-2 years	Bachelor's Degree
Honours	8	480	4 years	University Entrance
Postgraduate Certificate, Postgraduate Diploma: Postgraduate study extends knowledge and skills after completing a Bachelor's Degree, and prepares students for independent research.	8	60 120	6 months-1 year	Bachelor's Degree in a related field
Master Degree: A Master's Degree qualifies individuals who apply an advanced body of knowledge in a range of contexts for research, a pathway for further learning and professional practice.	Level 9 and above	180-240	1.5-2 years	

*Based on full-time study.

ANIMAL MANAGEMENT AND VETERINARY NURSING

Te Tieki me te Tapuhi Kararehe

Are you passionate about the care and welfare of animals?

Here's your chance to learn about this exciting world from animal care to anatomy and first aid. Plus, you will be responsible for the residents of the animal facility at EIT.

You will gain the skills necessary to assist veterinarians or help manage an animal facility.

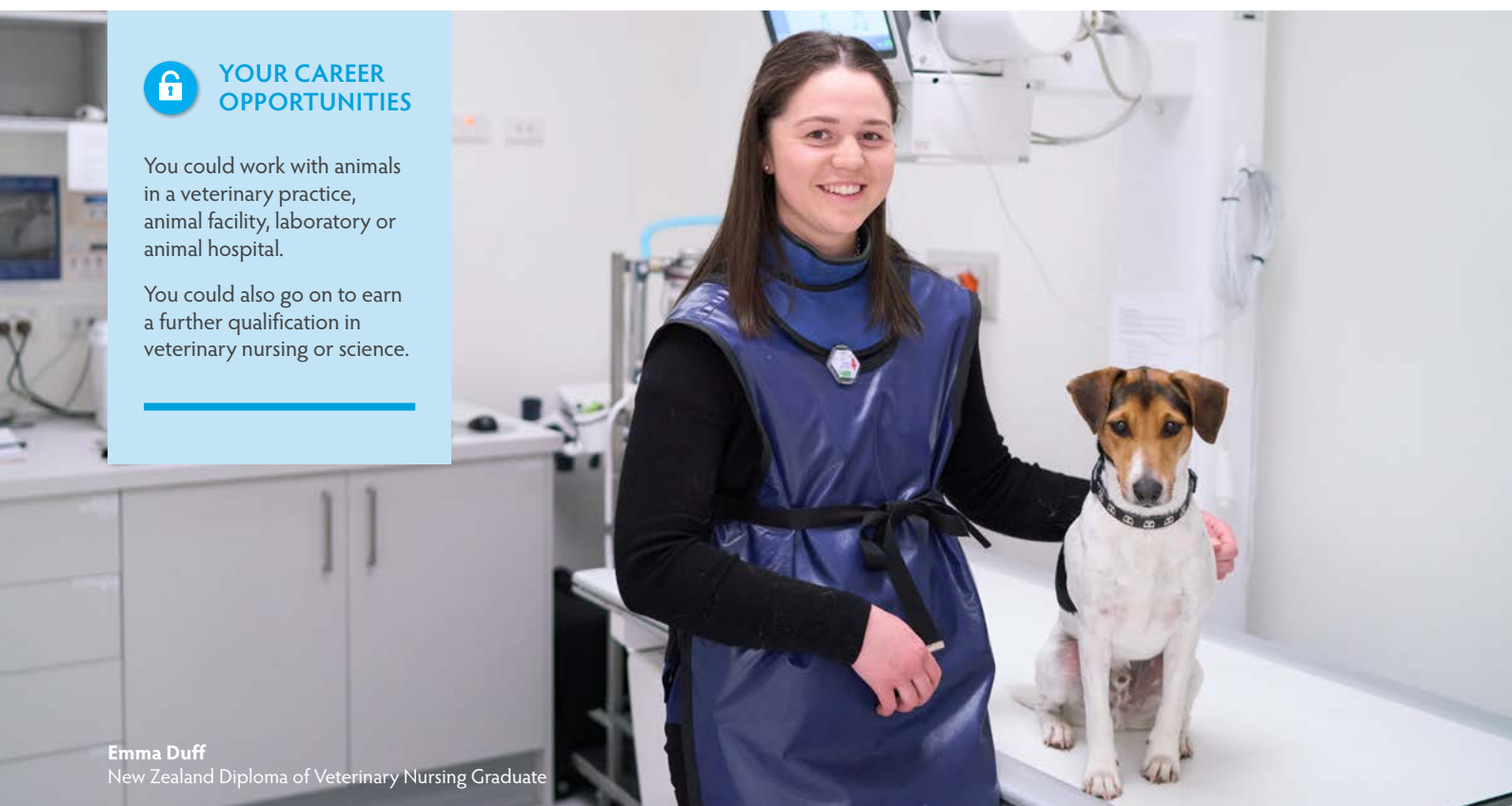
Offered in Hawke's Bay only for face to face teachings, as well as online for some courses.



YOUR CAREER OPPORTUNITIES

You could work with animals in a veterinary practice, animal facility, laboratory or animal hospital.

You could also go on to earn a further qualification in veterinary nursing or science.



Emma Duff
New Zealand Diploma of Veterinary Nursing Graduate

2027 Qualifications*

To find out more check out vetnursing.eit.ac.nz

Credentials	Programme	Level	Duration	Start
Degree	Veterinary Nursing	7	3 years full-time	February
Diploma	Veterinary Nursing (Companion Animal Strand)	6	2 years full-time	
Certificate	Animal Care (Companion Animal strand)	3	21 weeks full-time	February and July
	Animal Healthcare Assisting (Companion Animal)	4	36 weeks full-time	
	Study and Employment Pathways	4	19 weeks full-time	
Study and Employment Pathways	3			

*Part-time study may be available. Intakes may vary depending on location. All information is correct at time of print but subject to change without notice. Conditions apply.

BEAUTY



Te Whakarākei

In today's busy, stressful world, beauty therapists have people's happiness and wellbeing in their hands. Our programmes will give you all the skills you need for a rewarding career in the beauty industry.

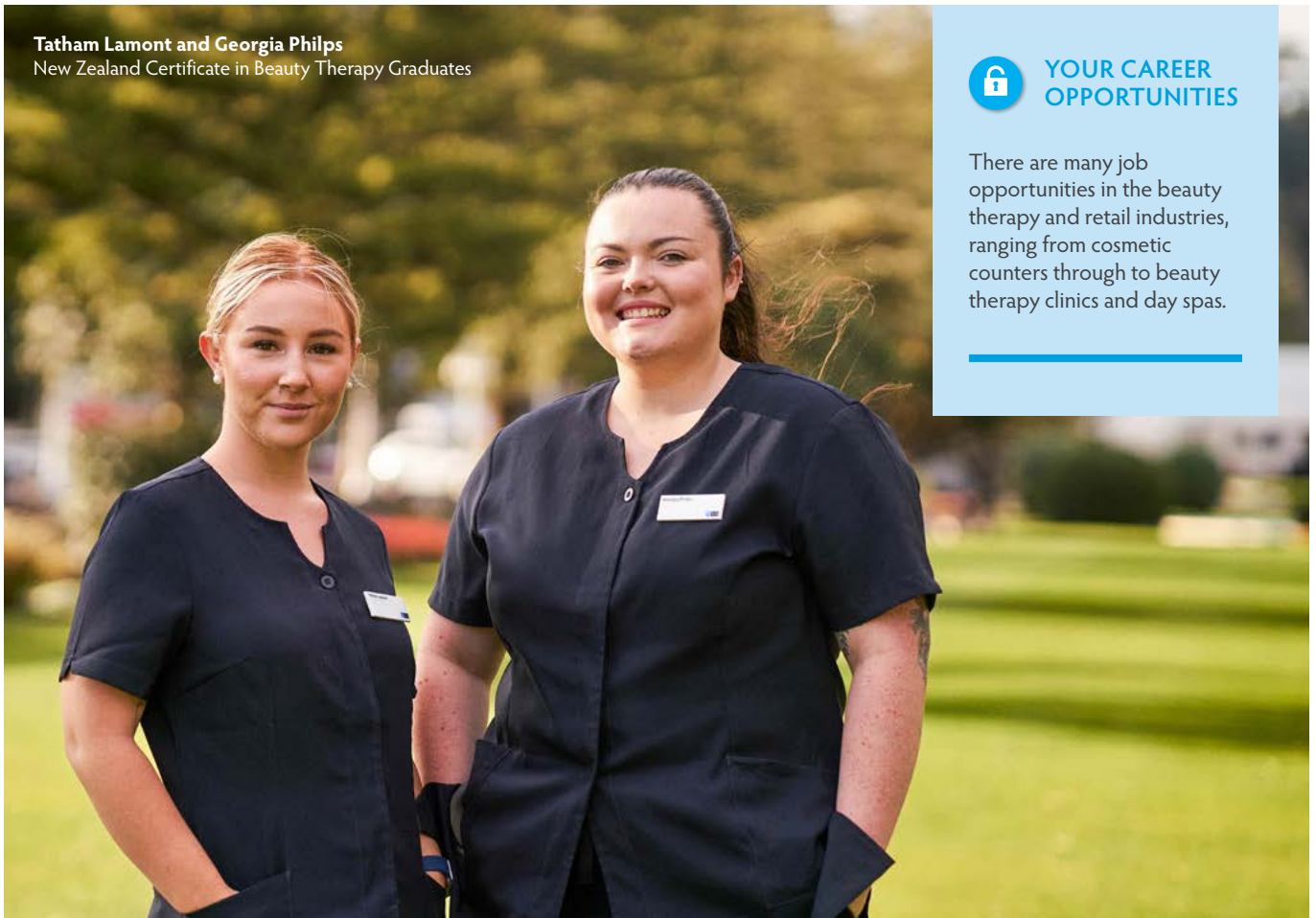
You'll get hands-on experience looking after real clients using the latest equipment in our beauty therapy clinic 'Refresh', which is strategically located in Napier's CBD to ensure a flow of customers and clients from the public, and to provide realistic work place experience.

We have qualifications at all levels, to suit all students.

Programmes cover varied beauty therapy treatments, including eyelash tinting, spray tanning, nail treatments and facials.

Advance to the diploma and gain skills in advanced treatments – skincare, spa treatments and electrolysis.

Offered in Hawke's Bay only.



Tatham Lamont and Georgia Philps
New Zealand Certificate in Beauty Therapy Graduates

YOUR CAREER OPPORTUNITIES

There are many job opportunities in the beauty therapy and retail industries, ranging from cosmetic counters through to beauty therapy clinics and day spas.

2027 Qualifications*

To find out more check out beauty.eit.ac.nz

Credentials	Programme	Level	Duration	Start	Fees Free
Diploma	Beauty Therapy	5	1 year full-time	February and July	
Certificate	Beauty Therapy	4			
	Skin Care and Cosmetics	3	17 weeks full-time		
	Foundation Skills (Hair and Beauty)	2			
					✓**

*Part-time study may be available. Intakes may vary depending on location.

All information is correct at time of print but subject to change without notice. Conditions apply.

**This programme was fee free in 2026 but is subject to review in 2027. Refer to eit.ac.nz for updated information.

BUSINESS

Te Pakihi

Accounting | Sales and Marketing | Digital Business | Operational Management | Logistics and Supply Chain Management | Human Resources | Business Analytics | Entrepreneurship

Join the School of Business for a qualification that can lead to employment locally, nationally or internationally.

At EIT you'll receive a strong foundation in all aspects of business with theory and practical experience.

Your study will also focus on an internship where you can put theory into action to impress a prospective employer.

You'll be taught by expert lecturers in classes which are exactly

the right size to ensure collaboration and involvement.

Our programmes are closely connected to the business and wider community so they are relevant and will help you build your networks for the future.

You may even find that you have knowledge, skills or previous achievements that can count towards your qualification.

Offered in Hawke's Bay and Tairāwhiti.



Chantel Delpont
Bachelor of Accounting Student



YOUR CAREER OPPORTUNITIES

In this highly competitive world, businesses and organisations need people with skills and knowledge that can give them an edge. Opportunities for qualified business people include starting your own business, or working in private companies, government and non-profit sectors.

2027 Qualifications*

Credentials	Programme	Level	Duration	Start
Postgraduate Certificate, Diploma or Master	Digital Business	8-9	6-24 months full-time	February, April, July, October
	Applied Management	8-9		
	Logistics and Supply Chain Management	8-9		
	Business Analytics	8-9	6 months full-time	
Graduate Diploma	Business	7	1 year full-time	February and July
Degree	Accounting	7	3 year full-time	
	Business Studies	7		
Diploma	Business	5	1 year full-time	
Certificate	Business (Accounting Support Services) <i>(Subject to Confirmation)</i>	4	6 months full-time	
	Business (Administration and Technology)	3		

*Part-time study may be available. Intakes and delivery methods may vary depending on location. All information is correct at time of print but subject to change without notice. Conditions apply.

To find out more check out business.eit.ac.nz

COMPUTING

Te Mahi Rorohiko

Software | Infrastructure | Analytics and Information | Machine Learning and Automation

At EIT you can gain a practical hands-on qualification that is designed to help you gain employment in the IT industry.

All courses include real-world examples and case studies.

The Bachelor of Computing Systems includes an internship or project, which ensures that all graduates are work-ready for demanding technology positions.

Part-time study options are available to provide you with the flexibility for upskilling or to cater for those wanting to gain a qualification whilst working.

Many Bachelor of Computing Systems students have managed to secure their first professional graduate IT role during their compulsory internship, through the relationships they built by studying locally, and engaging with industry.

As an in-demand IT graduate you can take your skills anywhere in the world, be well paid and work in a fast-paced and constantly evolving industry.

There's a huge variety of jobs, so take your pick.

Offered in Hawke's Bay and Tairāwhiti.

2027 Qualifications*

Credentials	Programme	Level	Duration	Start
Postgraduate Certificate, Diploma or Master	Applied Data Analytics <i>(Pending Approval)</i>	8-9	6-24 months full-time	October
	Information Technology	8-9		February, April, July, October
Degree	Computing Systems	7	3 year full-time	February and July
Diploma	Information Systems	5	1 year full-time	
Certificate	Information Technology Essentials	4	6 months full-time	
	Business (Administration and Technology)	3		

*Part-time study may be available. Intakes may vary depending on location. All information is correct at time of print but subject to change without notice. Conditions apply.

To find out more check out computing.eit.ac.nz

Terrence Masiwa Charamba
Bachelor of Computing Systems Student



YOUR CAREER OPPORTUNITIES

There is a huge variety of jobs depending on your specialisation and passion, including business/ systems analyst, data and business intelligence analyst, programmer/developer, database specialist, helpdesk and IT support, systems and network administrator, Internet of Things and automation support.

ENGLISH LANGUAGE

Te Reo Pākehā

Learning English can open doors to work, study and friendship.

At EIT you'll be able to improve your English in well-equipped classrooms, where the focus is on interaction and conversation.

You'll learn to 'live the language' as you develop your skills, taught by highly qualified and experienced teachers.

You can also make full use of specific English Language software to extend your learning.

EIT is a PELT (Pre-purchased English Language Tuition) approved provider.

Offered in Hawke's Bay only.



YOUR CAREER OPPORTUNITIES

Reading, writing, listening to and speaking English effectively and confidently benefits you, no matter what your job or career. Being proficient in English helps create opportunities. In any workplace it's important to communicate, and having a good command of the English language will help you, now and in the future.



Jiamin Zhang and Jinjiang Chen
English Language Students

2027 Qualifications*

Credentials	Programme	Level	Duration	Start	Fees Free
Certificate	English Language (NZCEL)	5	16 weeks per qualification full-time	February and July	
		4			
		3			
	English Language (NZCEL)	2	16 weeks per qualification full-time		
		1			
General English Short Courses		Varied (full and part-time options)	Flexible start dates		

*Part-time study may be available. Fees Free may be available.

All information is correct at time of print but subject to change without notice. Conditions apply.

**This programme was fee free in 2026 but is subject to review in 2027. Refer to eit.ac.nz for updated information.

To find out more check out english.eit.ac.nz

HAIRDRESSING AND BARBERING

Te Kutikuti Makawe



Hairdressing

Here's your chance to earn a qualification that will help you get ahead in hairdressing. You'll start by learning skills for hair styling, colouring, cutting, shampoo techniques and more.

With our New Zealand Certificate in Hairdressing Level 3 you'll demand attention with your advanced fundamental creative skills in colouring, long and short hairstyling, haircutting techniques, perming and lots more. You'll train in our commercial training salon 'Elite', where you will gain skills working with real clients under the guidance of expert lecturers.

Offered in Hawke's Bay only.

Barbering

From modern fades to beard trims to the classic short cuts, our Certificate in Commercial Barbering will see you become fully qualified in one year.

Learn barbering practice and theory from skilled professionals. Sharpen your barbering skills under supervision in our commercial barber shop FadeIT.

Open up your career opportunities in this exciting, creative industry.

Offered in Hawke's Bay only.

2027 Qualifications*

To find out more check out hair.eit.ac.nz

Credentials	Programme	Level	Duration	Start	Fees Free
Hairdressing					
Certificate	Hairdressing	3	1 year full-time	February and July	
	Foundation Skills (Hair and Beauty)	2	17 weeks full-time		✓**
Barbering					
Certificate	Commercial Barbering	4	1 year full-time	February	

*Intakes may vary depending on location. Fees Free may be available.

All information is correct at time of print but subject to change without notice. Conditions apply.

**This programme was fee free in 2026 but is subject to review in 2027. Refer to eit.ac.nz for updated information.



Vanessa Hopping
New Zealand Certificate in Hairdressing Graduate



YOUR CAREER OPPORTUNITIES

Hairdressing: Get practical skills backed up by theoretical knowledge using project-based learning. From simple blow waves to fashion-focused colouring techniques, you can get creative! Your career opportunities could include you working in hair artistry, working as a stylist, or becoming a superstar in hair salons or retail sales.

Barbering: The New Zealand Certificate in Commercial Barbering is intended as a stand-alone qualification in Barbering. Upon graduating the world will be your oyster, and career opportunities include: Barbershop support and Barbershop reception, at home or around the world.

HEALTH AND SPORT SCIENCE

Te Hauora me te Mātai Hākinakina

Health and Wellbeing | Mental Health | Health Science |
Relaxation and Remedial Massage | Sport, Recreation and Exercise Science

Qualified health and sport professionals make a positive difference in New Zealand.

You can study general health, disability and aged support, work and life skills (supported learning), mental health and addiction support.

The health and wellbeing programmes at EIT mix study, practical experience and theory. You'll study on campus, and also get experience through work placement or work experience in a wide range of community organisations.

You may want to prepare for a career in the sport, exercise and recreation industries. Sport and exercise programmes at EIT are designed for people aiming to become highly qualified professionals in sport and exercise science, sport coaching, sport and recreation management, and leaders in the health and wellness industry. Alternatively, an outdoor adventure programme might set you on the path to a career in the adventure tourism industry.

Get first-hand experience with relaxation and remedial massage programmes. You can enter the Wellness and Relaxation Massage programme to learn the foundation skills of massage therapy.

You can then progress into the New Zealand Diploma in Remedial Massage and learn specialist techniques including neuromuscular therapy, trigger point massage, identifying dysfunction in clients and more.

The EIT Institute of Sport and Health provides staff and students with access to cutting-edge facilities. It also provides an educational experience within an enthusiastic and supportive environment.

You'll also get experience in the superb Pettigrew Green Arena in Hawke's Bay and in YMCA facilities in Tairāwhiti. The Pettigrew Green Arena has a modern exercise science laboratory, lecture theatre, stadium, gym and massage clinic.

Offered in Hawke's Bay and Tairāwhiti.



YOUR CAREER OPPORTUNITIES

Across the health and sport science landscape, you can explore a variety of career options. From a career in the sport, exercise and recreation industry, explore the health and wellbeing space or make your move into relaxation and remedial massage. The choice is yours.

Matiu Spring
New Zealand Diploma of Sport and Exercise Science (Multi-sector) Graduate

To find out more check out sport.eit.ac.nz | health.eit.ac.nz | massage.eit.ac.nz

2027 Qualifications*

Credentials	Programme	Level	Duration	Start	Fees Free
Health and Community Wellness					
Diploma	Health and Wellbeing (Applied Practice)	5	1 year full-time	TBC	
Certificate	Health and Wellbeing – (Social and Community Services) (Mental Health and Addiction Support Strand)	4		February	
	Health and Wellbeing – (Advanced Care and Support)	4	34 weeks full-time (1 day per week on campus)	February	
	Health and Wellbeing – Support Work	3	3 days per week (over 17 weeks)	February and July	
	Skills for Learning and Working	1	2 years full-time	February	✓**
Relaxation and Remedial Massage					
Diploma	Remedial Massage	6	1 year full-time	TBC	
	Wellness and Relaxation Massage	5	1 year full-time	February	
Sport and Exercise Science Health Science					
Postgraduate Certificate, Diploma or Master	Health Science	8-9	6 months-18 months full-time	February and July	
Degree	Sport and Exercise Science	7	3 year full-time		
Diploma	Sport, Recreation and Exercise	5	1 year full-time		
Certificate	Exercise	5	17 weeks full-time		
	Exercise	4	19 weeks full-time		
	Outdoor and Adventure Education	4			
	Outdoor Experiences	3	14 weeks full-time	TBC	
	Sport, Recreation and Exercise	3	19 weeks part-time	February	
	Sport Coaching	3	12-20 weeks part-time	Various	
	Foundation Skills (Exercise and Wellbeing)	2	19 weeks full-time	February	✓**
	Foundation Skills (Outdoor Recreation)	2		TBC	

*Part-time study may be available. Intakes may vary depending on location.

All information is correct at time of print but subject to change without notice. Conditions apply.

**This programme was fee free in 2026 but is subject to review in 2027. Refer to eit.ac.nz for updated information.

Te Manaaki Tangata



EIT can equip you to become a hospitality professional, ready to take on a variety of roles. You'll be given plenty of experience in our superb modern training and production kitchens. You'll work in fully licensed training restaurants and cafés, where you'll gain invaluable experience preparing and serving lunch and dinner for paying diners.

To find out more check out hospitality.eit.ac.nz

Offered in Hawke's Bay and Tairāwhiti.



YOUR CAREER OPPORTUNITIES

You could become a barista, café owner, wait staff in a five-star hotel, or manage front of house operations.

How about training to be a qualified chef and working in a top restaurant, hotel or catering establishment?

There are many exciting job and career opportunities, whether you choose to work close to home or overseas.



Renowned Chef Peter Gordon (middle) with EIT Chef Tutor Amanda Libeau (left), Mark Caves (back right) and Korey Field (right), New Zealand Certificate in Cookery (Level 4) students Crystal Wallis and Arty Rickard

2027 Qualifications*

Credentials	Programme	Level	Duration	Start
-------------	-----------	-------	----------	-------

Micro-Credentials/Shortcourses

Visit our website for our full list of short courses available: shortcourses.eit.ac.nz

Food and Beverage

Certificate	Food and Beverage Service (Café Services)	3	15 weeks full-time	February and July
	Food and Beverage Service (Café and Restaurant Services)	3	18 weeks full-time	February and July

Cookery and Bakery

Diploma	Cookery (Advanced) with strands in Cookery or Patisserie	5	1 year full-time	February
Certificate	Cookery	4	1 year full-time	
	Cookery (Advanced) <i>Managed Traineeship / In-work Learning**</i> (Subject to Confirmation)	4	2 years part-time	February and July
	Baking (Generalist)	4	1 year full-time	February
	Baking	3	18 weeks full-time	
	Cookery	3		February and July

*Part-time study may be available.

**Intakes may vary depending on location.

IDEAschool

CREATIVE PRACTICE

Te Hanga Mahi Auaha

IDEAschool educates imaginations. We embrace creativity in all its forms and teach qualifications across a range of creative disciplines including visual art, design, music, fashion and screen production.

Our programmes offer you a unique environment that brings together studio-based practical learning with critical thinking and professional skills.

At IDEAschool, you become part of a creative community that nurtures you to become the artist, the designer, the musician, the filmmaker or the fashion extraordinaire that you were meant to be.

Offered in Hawke's Bay and Tairāwhiti.

YOUR CAREER OPPORTUNITIES

You could work as a graphic designer, art director, musician, artist, photographer, filmmaker, fashion designer, or use your transferable critical and creative thinking skills to pursue any career of your choice.

Our project-based programmes prepare you for real-world careers.



Artist: Chris Kilgour
Bachelor of Creative Practice Graduate

2027 Qualifications*

To find out more check out ideaschool.eit.ac.nz

Credentials	Programme	Level	Duration	Start	Fees Free
Master	Professional Creative Practice <i>Te Hono ki Toi (Poutiriao)</i>	9	18 months full-time	February and July	
Degree	Creative Practice	7	3 years full-time	February	
Diploma	Arts and Design	6	1 year full-time		
	Arts and Design	5			
	Fashion	5			
	Music	5			
	Screen Production	5			
Certificate	Arts and Design	4	17 weeks full-time	July	
	Content Creation	4			
	Fashion	4			
	Arts and Design	3		February	✓**

*Part-time study may be available. Intakes may vary depending on location.

All information is correct at time of print but subject to change without notice. Conditions apply.

**This programme was fee free in 2026 but is subject to review in 2027. Refer to eit.ac.nz for updated information.

MĀORI STUDIES

Te Ao Māori

"Piki ake, kake ake i te toi huarewa, te ara o Tāwhaki, i piki ai ki runga." *The need to learn and speak the Māori language is greater than ever before.*

Māori language is vital to New Zealand, and our identity. As Māori language becomes more widely used through Kōhanga reo, primary schools and Kura Kaupapa Māori, a new generation is embracing te reo Māori and ensuring that this special taonga is shared and treasured.

At Te Ūranga Waka in Hawke's Bay and Te Whatukura in Te Tairāwhiti, our te reo studies offer qualifications from basic introductory level learning through to a specialised masters programme, and gives you the opportunity to become proficient in Māori customs, culture and research.

Offered in Hawke's Bay and Tairāwhiti.

2027 Qualifications*

To find out more check out maori.eit.ac.nz

Credentials	Programme	Level	Duration	Start	Fees Free
Master	Professional Practice <i>Te Tohu Paerua mō Te Aka Whakaaroaro</i>	9	2 years full-time	February	
Postgraduate Diploma	Professional Practice <i>Te Tohu Titohu mō Te Aka Whakaaroaro</i>	8	1 year full-time		
Degree	Arts (Māori) (Honours) <i>Te Pikitanga ki Awarua</i>	7		3 years full-time	February and July
	Arts (Māori) <i>Te Whakangungutanga ki Ngā Tāiro a Kupe</i>	7			
Diploma	Te Reo Māori (Immersion) <i>Te Pōkairua Reo (Rumaki)</i>	5	1 year full-time	February	**
Certificate	Te Reo me Ngā Tikanga <i>Te Tohu Tauihu</i>	4			
	Tikanga (Waka Ama) <i>Te Pōkaitahi Tikanga (Waka Ama)</i>	4			
	Tikanga (Waka Ama) <i>Te Pōkaitahi Tikanga (Waka Ama)</i>	3		July	
	Te Reo Māori <i>Te Pōkaitahi Reo Māori (Reo Rua)</i>	3		February and July	
	Tikanga (Mātauranga Māori) <i>Te Pōkaitahi Tikanga (Mātauranga Māori)</i>	3		July	
Te Reo Māori <i>Te Pōkaitahi Reo Māori (Reo Rua)</i>	2	February and July			

*Part-time study may be available. Intakes may vary depending on location.

**This programme was fee free in 2026 but is subject to review in 2027. Refer to eit.ac.nz for updated information.



YOUR CAREER OPPORTUNITIES

You can work in government departments, hospital boards, teaching (kōhanga, primary, secondary and tertiary), or work with local iwi as a liaison or policy advisor.

You could work in television and radio as a reporter, scriptwriter, announcer or bilingual researcher. You can also take on key roles at your own marae and within your whānau, hapū and iwi.



Aaliyah Hutana
Bachelor of Arts (Māori) Graduate

NURSING AND HEALTH SCIENCE

Te Tapuhi me te Mātai Hauora

Nursing is one of the most exciting and rewarding study areas available. You can study at EIT to become a registered nurse, and choose to go on to our postgraduate programmes.

EIT offers a range of postgraduate nursing programmes, including the Postgraduate Diploma in Health Science (Registered Nurse Prescribing), Master of Nursing Science and the Master of Nursing (Nurse Practitioner Pathway).

Supportive and expert lecturers will help you gain knowledge and skills to become a registered or advanced nurse. You'll study at some of the best nursing teaching facilities in New Zealand, and you'll use state-of-the-art technology as part of your studies, including well-equipped clinical simulation laboratories. Nursing graduates are highly sought after by employers.

Offered in Hawke's Bay and Tairāwhiti.

2027 Qualifications*

To find out more check out nursing.eit.ac.nz

Credentials	Programme	Level	Duration	Start
Micro-Credentials/Shortcourses				
Visit our website for our full list of short courses available: shortcourses.eit.ac.nz				
Master ¹	Nursing Science	9	18 months full-time	February and July
	Nursing (Nurse Practitioner)	9	3-6 years	
Postgraduate Certificate	Health Science	8	6 months full-time	
	Health Science (Registered Nurse Prescribing)		2-4 years part-time	
Postgraduate Diploma	Health Science	8	1 year full-time	
Degree	Nursing	7	3 years full-time	
Diploma	Enrolled Nursing	5	18 months full-time	
Certificate	Study and Employment pathways	4	19 weeks full-time	
	Study and Employment pathways	3		

*Part-time study may be available. Intakes may vary depending on location. All information is correct at time of print but subject to change without notice. Conditions apply.

¹Subject to confirmation

YOUR CAREER OPPORTUNITIES

As a registered nurse, clinical nurse specialist, registered nurse prescriber or nurse practitioner your career will be highly rewarding, you'll experience challenges and variety as you make a positive difference in people's lives.

Katie Rongonui

Master of Nursing Science Graduate and EIT Assistant Head of School (Nursing)

Kya Joe

Bachelor of Nursing Student



PRIMARY INDUSTRIES

Te Ahumahi Mātāmua

Agriculture | Horticulture | Environment

The Primary Industries sector is one of New Zealand's largest economic drivers and provides employment to over 350,000 people. EIT offers programmes to meet the industry demand and make you highly sought after in the industry.

EIT delivers a range of qualifications targeted at the Food and Fibre Sector. In our agriculture programmes you will gain hands-on skills in stock handling, farm operations, vehicles and machinery, fencing, soils and pastures.

Demand for roles in the environmental sector are growing as people's awareness of environmental challenges and sustainability increases. Our environmental programmes allow you to progress to degree level, and the Graduate Diploma provides a pathway for learners who already hold a recognised degree to obtain a qualification in Environmental Studies.

In our horticulture programmes you can choose from a wide range of qualifications. Learn all about soil types, plant science, propagation, pest and disease management, irrigation and harvesting. Gain an understanding of horticultural technology and management.

You'll have access to horticulture laboratories, greenhouses, propagation facilities and garden plots.

EIT has a managed apprenticeship programme for those employed in the fruit industry. The apprentices work in Tairāwhiti and Hawke's Bay's biggest industry and gain qualifications and experience at the same time.

There are also diploma level horticulture programmes in fruit production and post-harvest. These are designed for those working in industry who want to further their knowledge and careers.

Offered in Hawke's Bay and Tairāwhiti.



Kere Pomana
Bachelor of Environmental
Studies Student



YOUR CAREER OPPORTUNITIES

Environmental Studies: Increase your knowledge and understanding of the ever-expanding world of environmental management and sustainability. There are a range of careers in the environmental space including Park Ranger, Environmental Consultant/Technician, Conservation Officer, Environmental Researcher and Resource Management Adviser/Consultant just to name a few.

Agriculture: Working outdoors is not for everyone, but if you like the sun on your back, working with sheep and cattle and like the idea of having a working dog by your side then this might be the career for you. As a qualified graduate you will be recognised as a skilled individual who has industry relevant skills. Our qualifications are designed to provide pathways irrespective of your initial skill level or knowledge. This could be as a farm assistant or contractor, through to a management or supervisory role across a variety of agricultural careers.

Horticulture: The horticulture industry continues to expand and a wide range of careers are available for qualified employees. The industry is using more and more technology and expensive equipment, and highly skilled employees are needed to manage and run them. Careers can range from on-orchard managers and technical staff to those in the post-harvest industry who are essential for maintaining the quality of our local and export produce.

Credentials	Programme	Level	Duration	Start	Fees Free	
Environmental Studies						
Degree	Environmental Studies	7	3 years full-time or part-time	February and July		
Graduate Diploma	Environmental Studies	7	1 year full-time			
	Environmental Management	5				
Certificate	Māori Environment Practices Te Hiringa o te Taiao	4				
Agriculture						
Certificate	Primary Industry Operational Skills	3	12-18 weeks full-time	Various	✓**	
	Primary Industry Skills (Agriculture)	2	14 weeks full-time			
Farming Workplace Operations						
Certificate	Agriculture (Farming Systems)	3	1 year full-time	February		
	Primary Industry Operational Skills	3				
	Growing Future Farmers	3	2 years full-time	Mid-January		
	Growing Future Farmers	2				
	Primary Industry Skills (Agriculture / Ecology)	2	12-14 weeks full-time	Various		✓**
Mahinga Kai						
Certificate	Māori Food Production, Harvest and Management	3	full-time and part-time	Various		
Horticulture						
Diploma	Horticulture Production (Fruit Production strand)	5	2-4 years part-time	Various		
	Horticulture Production (Post Harvest strand)	5				
Certificate	Horticulture Apprenticeship Programme	4	2-3 years part-time	Various	✓**	
	Horticulture Apprenticeship Programme	3				
	Land-Based Sustainability Practices	3	12 weeks full-time			September
	Primary Industry Operational Skills	3	12-18 weeks full-time			Various
	Primary Industry Skills (Horticulture)	2	12-16 weeks full-time or part-time			
	Horticulture Skills	2	24 weeks full-time			

*Part-time study may be available. Intakes may vary depending on location.

All information is correct at time of print but subject to change without notice. Conditions apply.

**This programme was fee free in 2026 but is subject to review in 2027. Refer to eit.ac.nz for updated information.

SOCIAL WORK

Te Mahi Pāpori

Social workers are an integral part of today's society and you could find yourself assisting in a range of areas from supporting individuals and communities, promoting social change and wellbeing, to working with government agencies at a policy level.

Our social work degrees will provide you with the knowledge, skills and attributes required for social work practice in a variety of settings such as schools, hospitals, community groups or government agencies.

Offered in Hawke's Bay and Tairāwhiti.



YOUR CAREER OPPORTUNITIES

Social work is challenging and offers plenty of variety, and as a qualified social worker you'll be taking on a career that is rewarding and fulfilling.



Nathanael Elliott
Bachelor of Social Work Student

2027 Qualifications*

To find out more check out socialwork.eit.ac.nz

Credentials	Programme	Level	Duration	Start
Master	Professional Practice	9	up to 2 years full-time	February
Postgraduate Diploma	Professional Practice	8		
Postgraduate Certificate	Professional Supervision	8	1 year part-time	
Degree	Social Work	7	3 years full-time	February and July
Certificate	Study and Employment Pathways	4	19 weeks full-time	
	Study and Employment Pathways	3		

*Part-time study may be available. Intakes may vary depending on location. All information is correct at time of print but subject to change without notice. Conditions apply.

TEACHING

Te Whakaakoako

Learn to become a great teacher. EIT teacher education perfectly balances theory, research and practice.

As you study, you'll work alongside experienced teachers in local early childhood settings or primary schools as part of the programme.

Teaching is a rewarding career, and our quality education programmes will help you develop your knowledge and skills for teaching.

Bachelor of Teaching (Primary)

Become a primary teacher and help New Zealand children get off to a great start in life. This degree works in close partnership with primary schools to give you a balance of theory, self-directed learning and practical experience.

As a candidate teacher, you'll experience two days a week in a school. On-campus, for two days a week you'll learn the theory and current practice underpinning teaching subjects, such as learning languages and literacy, mathematics, science, social studies, art, technology, health and physical education.

Bachelor of Teaching (Early Childhood Education)

A passionate, skilled and qualified early childhood teacher has an important role in the learning and development of infants, toddlers and young children. The early years of a young child's life lay the foundation for life-long learning.

This programme enables you to undertake study two days a week on-campus to attain a teaching qualification while being employed or working voluntarily two days a week in an early childhood setting.

On completion of the Bachelor of Teaching (Early Childhood Education) you will be ready to apply for registration as a provisionally certificated ECE teacher with the Teaching Council of Aotearoa New Zealand.

Offered in Hawke's Bay and Tairāwhiti.



YOUR CAREER OPPORTUNITIES

When you complete your primary teaching degree or early childhood education at EIT you can apply for registration with the Teaching Council of Aotearoa New Zealand as a provisionally certified teacher.



Ella Ralph
Bachelor of Teaching (Primary) Graduate

2027 Qualifications*

To find out more check out teaching.eit.ac.nz

Credentials	Programme	Level	Duration	Start
Master	Professional Practice	9	up to 2 years full-time	February
Postgraduate Diploma	Professional Practice	8		
Postgraduate Certificate	Professional Supervision	8	1 year part-time	
Degree	Teaching (Early Childhood Education)	7	3 years full-time	
	Teaching (Primary)	7		
Diploma	Early Childhood Education and Care	5	1 year full-time	
Certificate	Study and Employment Pathways	4	19 weeks full-time	February and July
	Study and Employment Pathways	3		

*Part-time study may be available. Intakes may vary depending on location. All information is correct at time of print but subject to change without notice. Conditions apply.

TOIHOUKURA

Toihouora! Toihoutangata! Toihoukura!
Toihoukura—Enriching Lives!

Creative Māori Arts

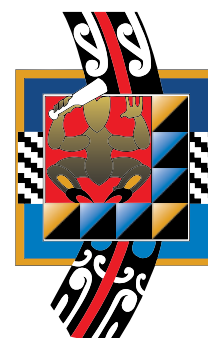
Contemporary Māori visual arts looks to the past to shape the future of Toi Māori across Aotearoa and other First Nations.

You will be encouraged to be an independent artist, guided by your own environmental context and your own creative insights.

All students will work in individual and collaborative art projects. Wānanga based learning is unique to Toihoukura. Students will be able to curate exhibitions on a regular basis. Studying at Toihoukura is a holistic experience in learning to create art

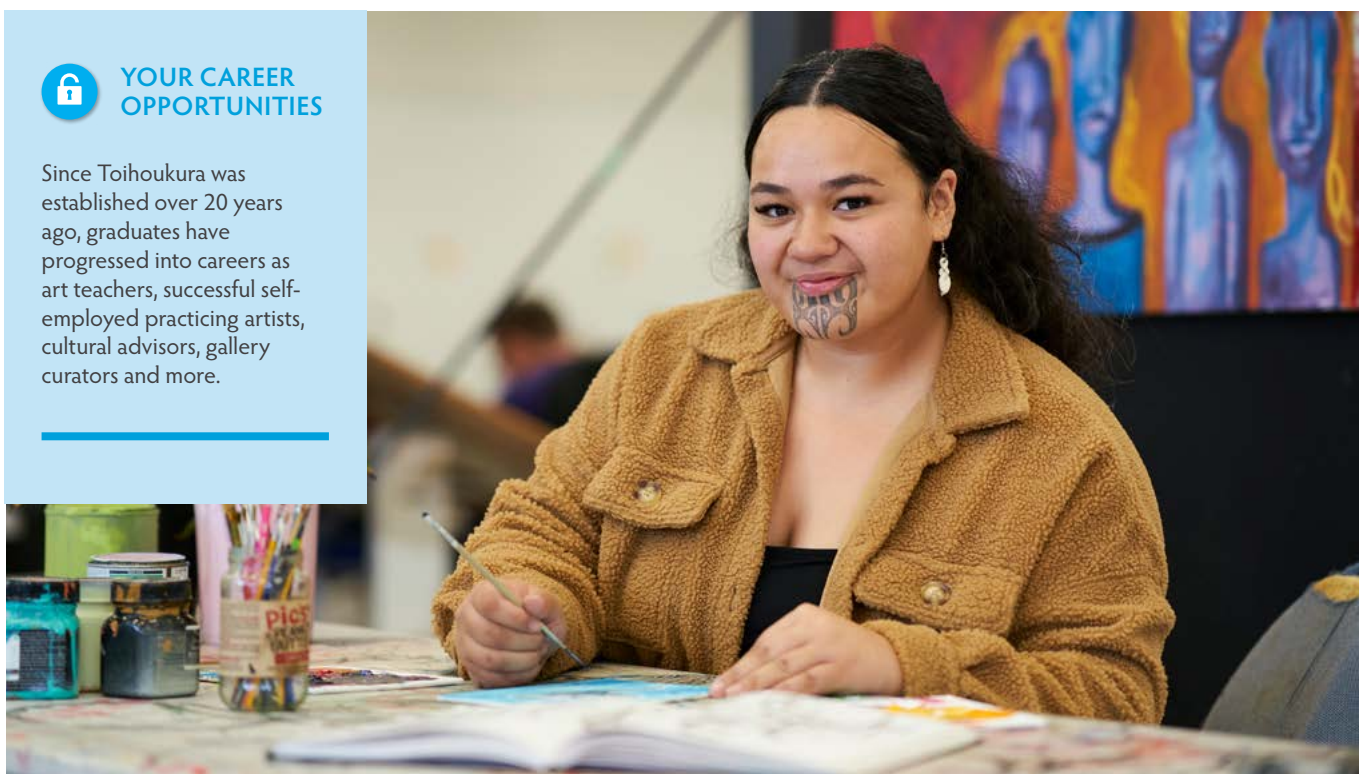
that finds its origins in Te Ao Māori through mātauranga and contemporary art techniques that will contribute to shaping the future of Toi Māori.

Toihoukura runs its unique, world-class programmes primarily from our Tairāwhiti Campus.



YOUR CAREER OPPORTUNITIES

Since Toihoukura was established over 20 years ago, graduates have progressed into careers as art teachers, successful self-employed practicing artists, cultural advisors, gallery curators and more.



Kamoe Aniva Mili Paki

Bachelor of Māori Visual Arts (Te Toi o Ngā Rangi) Graduate, Toihoukura

2027 Qualifications*

Credentials	Programme	Level	Duration	Start
Master	Professional Creative Practice (180 credits) <i>Te Hono ki Toi (Poutiriao)</i>	9	18 months	February
	Professional Creative Practice (240 credits) <i>Te Hono ki Toi (Poutiritāeo)</i>	9	2 years full-time	
Degree	Professional Creative Practice (Honours) <i>Te Hono ki Toi (Poutiri-ā-rangi)</i>	7	1 year full-time	
	Māori Visual Arts <i>Te Toi o Ngā Rangi</i>	7	3 years full-time	
Diploma	Ngā Toi <i>Te Pitau a Manaia</i>	5	1 year full-time	
Certificate	Ngā Toi <i>Ka Tipu te Whaihanga</i> <i>(Subject to Confirmation)</i>	4		

*All information is correct at time of print but subject to change without notice. Conditions apply.

To find out more check out toihoukura.eit.ac.nz

TOURISM AND TRAVEL

Te Tāpoi me te Tipiwhenua

By studying with EIT you can take a big step towards working in one of the world's biggest industries. If you love tourism, and want to help others explore our beautiful country, then study for a qualification that can really take you places.

Close links with industry partners provide you with hands-on experience in a work environment.

Offered in Hawke's Bay and Tairāwhiti.



YOUR CAREER OPPORTUNITIES

Graduates can gain employment in the exciting world of tourism in a variety of roles. These could be as a travel consultant, iSite employee, flight attendant, attractions guide, tour guide, airline ground staff or hotel reception.

2027 Qualifications*

Credentials	Programme	Level	Duration	Start
Diploma	Tourism and Travel	5	1 year full-time	February
Certificate	Tourism ²	4	19 weeks full-time	July
	Tourism	3		February

*All information is correct at time of print but subject to change without notice. Conditions apply.

²Offered in Hawke's Bay only

To find out more check out tourism.eit.ac.nz



TRADES AND TECHNOLOGY

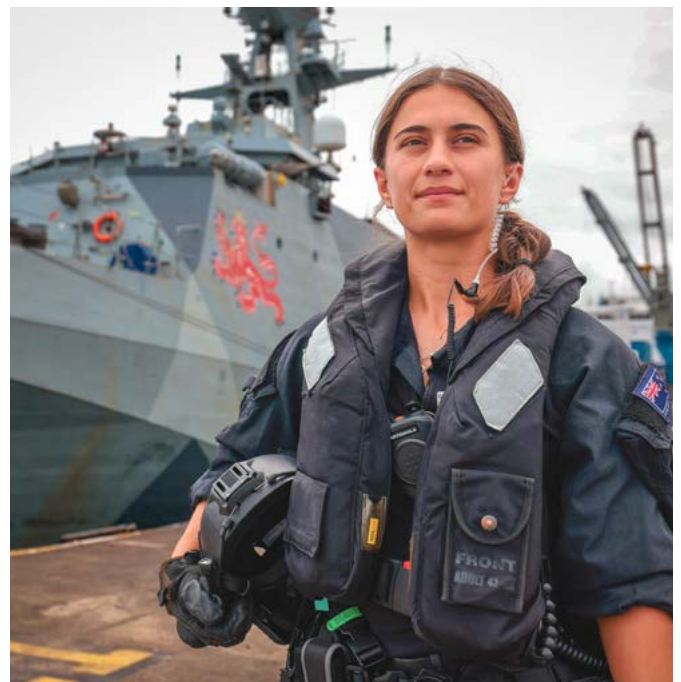
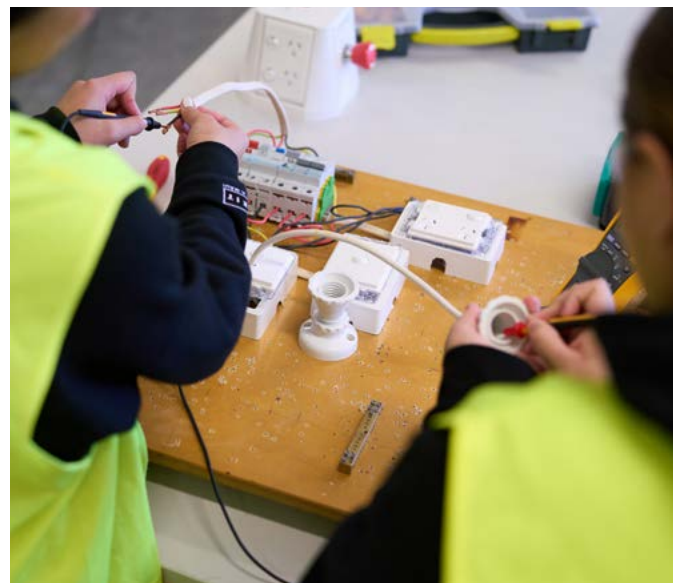
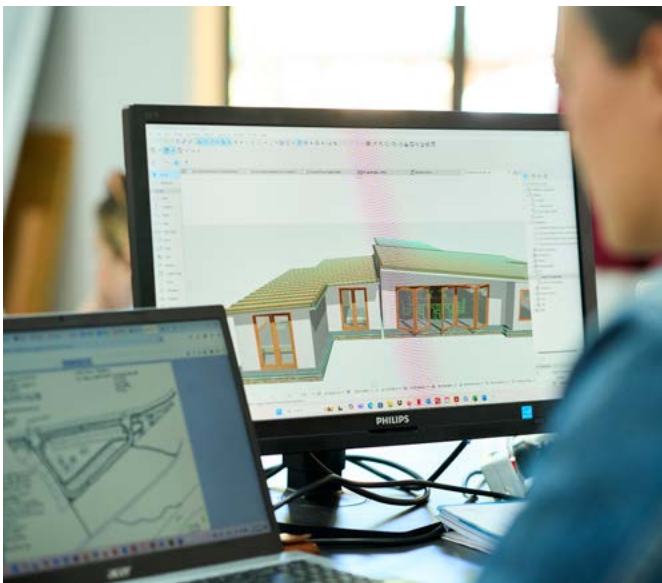
Te Ringarehe me te Hangarau

EIT's Trades and Technology qualifications are all about giving you hands-on, job-ready skills and turning your passion into a meaningful career. Designed with industry in mind, our courses blend practical, real-world learning with essential theory, delivered by experienced tutors in state-of-the-art facilities.

From construction, carpentry, electrical, plumbing, automotive, engineering and architectural technology, through to services pathway which prepares you for training or employment with the New Zealand Police, Armed Forces or Correction Services, EIT offers opportunities to suit a wide range of career goals.

With a strong focus on real-world readiness and personal development, EIT graduates leave confident, capable and ready to step into careers that matter - locally, nationally and beyond. Get involved in real projects such as constructing a building, wiring a house or repairing a vehicle, and graduate with the practical experience employers value.

Offered in Hawke's Bay and Tairāwhiti.



Ishaan Prasaad
New Zealand Certificate in Mechanical Engineering
Graduate

Mya Wells
New Zealand Certificate in Study and Employment Pathways
(Services Pathway) Graduate

2027 Qualifications*

To find out more check out trades.eit.ac.nz

Credentials	Programme	Level	Duration	Start	Fees Free
Diploma	Architectural Technology	6	2 years full-time part-time available	February	
	Construction Management	6	3-4 years part-time		✓**
Certificate	Electric Vehicle Automotive Engineering Industry based	5	18 months part-time	January and May	
	Study and Employment Pathways (Services Pathway)	3	19 weeks full-time	February and July	
	Construction Trade Skills (Carpentry)	3	1 year full-time		
	Electrical Pre-trade	3			
	Automotive Engineering	3			
	Mechanical Engineering	3			
	Infrastructure Works Industry based	3	18-34 weeks part-time	Anytime	
	Plumbing, Gasfitting and Drainlaying (Pre-apprenticeship)	3	24 weeks full-time	February	
	Allied Trades (Roofing, Painting)	3	19 weeks full-time	July	
	Building, Construction & Allied Trades Skills	3	15 weeks full-time	May	
	Building, Construction & Allied Trades Skills	2		February	✓**
	Foundation Skills (Automotive and Engineering)	2	19 weeks full-time	February and July	✓**
	Foundation Skills (Construction)	2			

Apprenticeship Programmes³ (Anytime Enrolment)

Certificate	Light Automotive Engineering	4	3 years part-time	Anytime	
	Heavy Automotive Engineering (Road Transport strand)	4	4 years part-time		
	Automotive Electrical Engineering	4	3 years full-time		
	Carpentry	4	3.5 years part-time		

*Part-time study may be available. Intakes may vary depending on location.
All information is correct at time of print but subject to change without notice. Conditions apply.
**This programme was fee free in 2026 but is subject to review in 2027. Refer to eit.ac.nz for updated information.

³To be accepted into one of the Apprenticeship Programmes, applicants need to be currently working in the industry.



YOUR CAREER OPPORTUNITIES

Qualified, professional tradespeople are always in demand.

You could score a great career in architecture, carpentry, electrical engineering, automotive, plumbing and gasfitting or engineering, including machining, welding and fabrication.



VITICULTURE AND WINE SCIENCE



Te Mātai Wāina

Here's your chance to study viticulture and wine science in the heart of a premium New Zealand wine region. Hawke's Bay is an official 'Great Wine Capital'.

You can choose from a range of practical grapegrowing and winemaking programmes taught flexibly to suit your individual needs. All viticulture and wine science programmes are offered both on campus and online.

You will learn from highly qualified and experienced lecturers, and gain invaluable experience at our superb teaching and research winery, vineyard, wine sensory and science laboratories.

As part of your programme you will be exposed to a wide range of commercial vineyards, winery operations and industry professionals, adding authentic learning opportunities to your study.

On campus study offered in Hawke's Bay

2027 Qualifications*

To find out more check out wine.eit.ac.nz

Credentials	Programme	Level	Duration	Start
Master	Wine Business and Innovation (On campus and online)	9	6-24 months full-time or 1-4 years part-time	January and July
Postgraduate Diploma	Wine Business and Innovation (On campus and online)	8		
Postgraduate Certificate	Wine Business and Innovation (On campus and online)	8		
Graduate Diploma	Wine Science (On campus and online)	7	1 year full-time or 2 years part-time	January
	Viticulture Science (On campus and online)	7		
Degree	Viticulture and Wine Science (On campus and online)	7	3 years full-time or 6 years part-time	January and July
Certificate	Winegrowing ⁴ (On campus and online)	4	1 year part-time	May and September

*Part-time study may be available. Intakes may vary depending on location. All information is correct at time of print but subject to change without notice. Conditions apply.

⁴This qualification's official name is the New Zealand Certificate in Horticulture Production (Winegrowing strand)



YOUR CAREER OPPORTUNITIES

We pride ourselves on our strong connections with the local wine industry, which means you'll be in a superb position to find employment once you graduate.

Our programmes have an excellent global reputation, providing further opportunities to work in some of the world's great wine regions.

Alena Kamper
Bachelor of Viticulture and Wine Science Graduate



POSTGRADUATE STUDY

Akoranga Tohu Paerunga

Advance your career with postgraduate study at EIT.

EIT's postgraduate programmes combine practical learning, applied research, and industry-connected teaching designed to deepen expertise. You'll study in small, supportive classes, work with experienced academics and practitioners, and gain skills you can apply immediately in the workplace. With flexible study options and a strong focus on real-world impact, postgraduate study at EIT helps you future-proof your career and make a meaningful difference in your field.

Check out postgraduate.eit.ac.nz for more information.



Enrol Now!

WE HAVE OPTIONS FOR POSTGRADUATE STUDY IN THE FOLLOWING AREAS:

- Business
 - Computing
 - Creative Arts
 - Environmental Studies
 - Māori Studies
 - Nursing and Health Science
 - Social Work
 - Teaching
 - Toihoukura
 - Viticulture and Wine Science
 - Wine Business and Innovation
-

EIT CAMPUSES LOCATIONS

NGĀ TAUWĀHI O TE AHO A MĀUI



REGIONAL LEARNING CENTRES

**Central
Hawke's Bay**
53 Russell Street
Waipukurau
(06) 858 7009

Hastings
416 Heretaunga
Street West
Hastings
(06) 974 8936

Maraenui
18-20 Bledisloe Road
Maraenui
Napier
(06) 830 1575

Wairoa
6 Paul Street
Wairoa
(06) 838 7349

Ruatoria
12 Hekiera Road
Ruatoria
(06) 864 8063