

# National Certificate in Forestry (Generic Skills Workplace Safety and Operations) [Level 2] 2016

For New Zealand Citizens & Permanent Residents



The National Certificate in Forestry provides entry level skills in health, safety, environmental and operational knowledge for the forestry industry including chainsaw use and safe operation of an ATV.

Subject areas include:

- Principles of Commercial Forestry
- Chainsaw Safety, Maintenance and Operating
- Hazard Identification and Management
- Forestry Foundation Skills
- Vegetation Fire Fighting

You will also have the opportunity to experience a wide range of commercial forestry operations around the district.

### Your career opportunities

Once you have completed this qualification, students who continue can progress to the

National Certificate in Forest Operations [Level 3] with strands in:

- Establishment
- Thinning to Waste (Small Trees)
- Thinning to Waste (Large Trees)
- Tree Felling - Basic Techniques
- Thinning for Extraction
- Breaking Out for Ground Based Harvesting
- Breaking Out for Cable Harvesting
- Landing Operations
- Mensuration

If students already hold some of the Unit Standards required to complete the National Certificate in Forestry (Generic Skills - Workplace Safety and Operations) [Level 2], a tailor made course will be designed for students to complete the certificate.

## EIT Hawke's Bay and EIT Tairāwhiti - Stout Street

Level 2 | September | 48 credits | 14 weeks | Full-time

Fee FREE

This is a guide only. All costs quoted include GST. Fees apply to NZ Citizens and New Zealand Permanent Residents only.

### Programme Contact:

**Tairāwhiti - Stout Street.** Phillipa Huberts Phone: 06 869 0810 ext 7600. Email: [phuberts@eit.ac.nz](mailto:phuberts@eit.ac.nz)

**Hawke's Bay.** Denise Davis Phone: 06 974 8000 ext 6043. Email: [ddavis@eit.ac.nz](mailto:ddavis@eit.ac.nz)



EASTERN INSTITUTE OF TECHNOLOGY  
0800 22 55 348 | [eit.ac.nz](http://eit.ac.nz)

Te Aho a Māui



## Intake Four

## Hawke's Bay and Tairāwhiti

|                  |                           |
|------------------|---------------------------|
| Programme Starts | Monday, 12 September 2016 |
| Programme Ends   | Friday, 16 December 2016  |

### ENTRY CRITERIA

The National Certificate in Forestry (Generic Skills) [Level 2] is an open entry programme which means no formal academic qualifications are required. Students must be aged 16 years and over. A

- A drug test will be conducted during the programme to enable your access to logging operations and work placements as per individual company policy.

### Class times

Can vary between 8.30am to 5.00pm Monday to Friday.

### Individual study hours

Varies depending on courses selected.

### Literacy and Numeracy Skills

A literacy and numeracy assessment is part of the preparation for all levels one to three programmes. This is a national requirement from the Tertiary Education Commission (TEC). This information gives your tutors information on what you already know to help them provide the help that you may need in your studies.

There are two assessments. The first assessment will take place within the first three weeks of the programme. The second will be a week or two before you finish the programme. This final assessment will

show how you have improved with your Literacy and Numeracy skills.

There will always be a tutor to help you when doing the assessment. The most important thing to know about this assessment is that you CANNOT fail. You will merely get information on your literacy and numeracy skills. The result will NOT have an impact on any of your assessment marks in your course work.

### WORLD CLASS 'A' RATED LECTURERS

EIT lecturers have the latest knowledge and research in their field of expertise, and are able to attract all-important research grants. For you, it means highly qualified academics who have the most up-to-date learning available.

EIT is rated one of the top two institutes of technology and polytechnics in New Zealand for research excellence by the Tertiary Education Commission. This helps EIT secure funding through the Government's performance-based research fund. Government funding helps EIT continue to play a leading role in research in New Zealand.

Our lecturers are in demand to work closely on research projects with universities, polytechnics, businesses and organisations at regional, national and international levels. They pass on their knowledge to you via their teaching. When you study at EIT, you will be at an institute that is highly rated for quality academic research.



## Student Finance - STUDYLINK

StudyLink is a service of the Ministry of Social Development. It administers Student Allowances and Student Loans as well as other forms of financial assistance for students.

The StudyLink website provides tools, calculators and information to help students who are thinking about

study to plan their finances and only borrow what they need.

Use StudyLink's 'What You Can Get' eligibility test to find out what you may be eligible for.

**STUDYLINK on 0800 88 99 00 or online at [www.studylink.govt.nz](http://www.studylink.govt.nz)**

## COURSE DESCRIPTIONS

| Compulsory Course No | Brief Description - The units may change for 2016                                           | No. of Credits | NZQA Level |
|----------------------|---------------------------------------------------------------------------------------------|----------------|------------|
| 17769                | Demonstrate knowledge of general health, safety, and environmental requirements in forestry | 6              | 2          |

### Health, Health Studies, First Aid

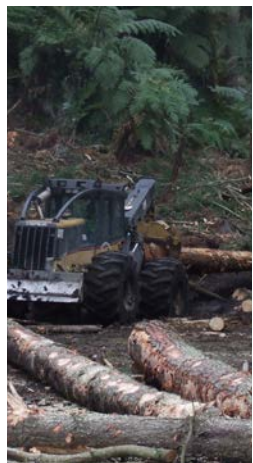
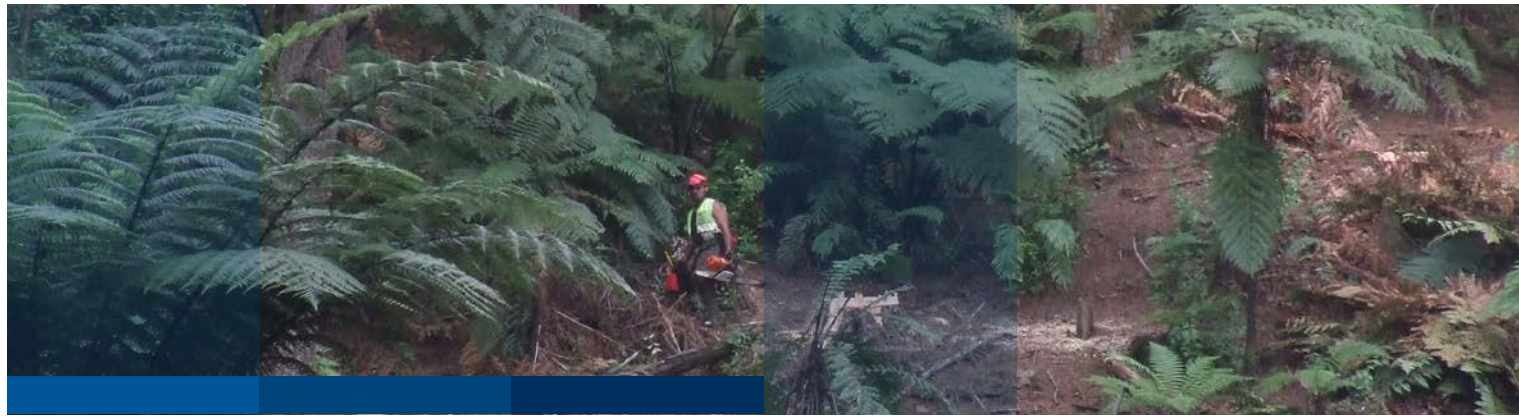
|       |                                                                                 |   |   |
|-------|---------------------------------------------------------------------------------|---|---|
| 26551 | Provide first aid for life threatening conditions                               | 1 | 2 |
| 26552 | Demonstrate knowledge of common first aid conditions and how to respond to them | 1 | 2 |

### Health, Occupational Health and Safety, Occupational Health and Safety Practice

| Elective A Course No | Brief Description - The elective units may change for 2016                  | No. of Credits | NZQA Level |
|----------------------|-----------------------------------------------------------------------------|----------------|------------|
| 17593                | Apply safe work practices in the workplace                                  | 4              | 2          |
| 17602                | Apply hazard identification and risk assessment procedures in the workplace | 4              | 3          |
| 24557                | Demonstrate knowledge of the safe operation of a quad bike                  | 3              | 2          |
| 24559                | Ride a quad bike on hilly terrain                                           | 4              | 3          |
| 3285                 | Demonstrate knowledge of protection of personal safety at vegetation fire   | 3              | 3          |

| Elective B Course No | Brief Description - The elective units may change for 2016                       | No. of Credits | NZQA Level |
|----------------------|----------------------------------------------------------------------------------|----------------|------------|
| 6916                 | Demonstrate knowledge of the Approved Code of Practice relating to chainsaw use  | 5              | 2          |
| 6917                 | Demonstrate basic chainsaw operation                                             | 8              | 2          |
| 22994                | Demonstrate knowledge of factors that affect the performance of forestry workers | 10             | 2          |





## HOW TO ENROL

### STEP 1

Request an Application Pack.  
This includes detailed programme information, entry requirements, and an enrolment form.  
0800 22 55 348  
eit.ac.nz  
info@eit.ac.nz  
Complete and return the enrolment form and all supporting documents outlined in your Application Pack.

### STEP 2

You may be contacted and invited to an interview.  
You will receive an acceptance letter with programme information including your programme start date.  
Your acceptance letter may also include course selection forms, you need to complete and return them.

### STEP 3

You or your employer will receive an invoice.  
Organise payment of your fees.

## THE EXPERIENCE YOU NEED & THE SUPPORT TO SUCCEED



DISCLAIMER: There is a nationwide transition to new New Zealand qualifications at Levels 1-6. Information contained in this publication is correct at the time of printing, but may be subject to change. Whilst all reasonable efforts will be made to ensure listed programmes are offered and regulations are current, EIT reserves the right to change content, method of delivery, to withdraw any programme or course of study, or impose limitations on enrolment. Some programmes mentioned in this publication are subject to final approval and accreditation or sufficient enrolments being received. Fees for 2016 will be set by EIT Council by November 2015 and are subject to change. Check eit.ac.nz for the latest information or phone 0800 22 55 348.



EIT