

2024



# NZ Diploma in Music

## Level 5

During this diploma you will be developing your practical skills in performance, composition, songwriting and audio production.

Individual and group projects will prepare you for a diverse and exciting career in the music industry.

With your diploma completed successfully you can continue on to the second year of the Bachelor of Creative Practice.

Location	IDEASchool Hawke's Bay
Start	February
Length	One year full-time
Contact	Irina Konig Phone: 06 830 5021 Email: <a href="mailto:ikonig@eit.ac.nz">ikonig@eit.ac.nz</a>

IDEASchool  
TE KURA AHU TAONGA



TE AHO A MĀUI



Te Pūkenga

# Do you want a career in the music industry?

This one year (34-week) project based programme studies popular music with an emphasis on advanced performance practice, composition and audio engineering. The practical component will be underpinned by a sound theoretical knowledge of contemporary music.

## What you will learn:

- Incorporating Ableton Live and other software into performance.
- Advanced performance and recording methods specific to your instrument.
- Multi-tracking and live recording in a professional studio environment.
- Audio engineering and editing in Pro Tools and other software.
- Writing and arranging music for small to large bands.
- Finding out which funding bodies apply to you and creating usable grant/scholarship applications.
- The ins and outs of writing music professionally.
- Utilising social media and other online platforms to boost your professional profile and market your events.
- Collaboration with Screen Production, Fashion and Visual Arts learners.

## Career and study opportunities

You will gain a broad introduction and understanding of the different aspects of the industry which will prepare you for employment or to go on to further study at diploma or degree level. Possible jobs and career opportunities can include:

- Music performer
- Music producer
- Commercial composer
- Session musician
- Specialist instrument tutor
- Assistant recording engineer
- Assistant performance engineer

Continue your study pathway with the Bachelor of Creative Practice followed by the Bachelor of Professional Creative Practice (Honours) degree or a Masters degree available across the Te Pūkenga network.



## NZ Diploma in Music Level 5, 120 credits

 IDEASchool Hawke's Bay

 Full-time: 1 year

 Fee: Visit [fees.eit.ac.nz](https://fees.eit.ac.nz) to see the fees for this programme

### Timetable

Your study time will be made up of contact time (class times, tutorials, industry-based learning) and non-contact time (your own self-directed time).

### Contact time

On-campus classes are usually scheduled between 9.00am-3.00pm, Monday to Friday which equates to approximately 20 hours per week.

### Non-contact time

You should plan to spend 17.5 hours per week on self-directed time.

### Entry requirements

#### Academic requirement

The academic entry requirement for the NZ Diploma in Music is either:

- University Entrance, as defined by the NZQA; or
- Evidence regarded as sufficient by the Discipline Leader of the capability to undertake and complete the programme of study; or
- At the discretion of EIT | Te Pūkenga, where the applicant is over 20 years of age and demonstrates the capability to undertake and complete the programme of study.

**All applicants will be required to attend an interview/audition with Discipline Leader. Applicants must be able to play a musical instrument and/or sing confidently in front of others. Applicants who have experience with music-making software will also be considered. A short written questionnaire will determine computer literacy at the time of the audition.**

### English language entry requirements

All applicants must demonstrate an acceptable level of English language fluency prior to acceptance in the programme.

For international applicants, ways in which English language fluency may be demonstrated include the following:

- Successful study of a programme in which English was the language of instruction (subject to the conditions in the EIT | Te Pūkenga Database for English Language Proficiency (DELP)).
- Completion of a New Zealand Certificate in English Language (Level 4 with any endorsement).

## 2024 Key dates

**Programme starts** Monday, 19 February

**Programme ends** Friday, 29 November

**Semester breaks** 15-26 April  
1-19 July  
30 September-11 October

- IELTS Academic score of 6, with no band score lower than 5.5, achieved in a single test within the two years preceding enrolment.
- Accepted international equivalents to the above IELTS scores, achieved in a single test within the two years preceding enrolment (see equivalency tables in the DELP).

### Entry with credit

For information and enquiries about Recognition of Prior Learning and Cross Credit please contact Svetlana Eliason, Discipline Leader, on 06 830 1183, [seliason@eit.ac.nz](mailto:seliason@eit.ac.nz).

### Assessments

Each course will be assessed for the required NZQA graduate outcomes so that you will have fulfilled all these by the completion of all courses.

### Facilities

IDEASchool's music department offers two rehearsal rooms which can be converted into live recording studios. Each rehearsal room has backline equipment including drum kits, bass and guitar amps and a full PA system. Also available is an acoustically treated recording space that houses a 32-channel Audient mixing desk, allowing students to record and mix at a professional level. Students will have access to a range of microphones and hardware as well industry standard recording software, specifically Pro Tools and Ableton Live.



## Year 13 scholarship

EIT | Te Pūkenga offers a limited number of Year 13 Scholarships to eligible Taupō, Hawke's Bay and Tairāwhiti (Gisborne) learners who are beginning an undergraduate degree in 2024. You can study any one of our 13 degrees or selected level 5 certificate and diploma programmes that pathway into a degree.

If you live outside the Taupō, Hawke's Bay or Tairāwhiti regions there are scholarships available nationwide for a selected few programmes. Go to [scholarships.eit.ac.nz](https://scholarships.eit.ac.nz) to find out which programmes you can apply for.

For full information about the Year 13 Scholarship check out [scholarships.eit.ac.nz](https://scholarships.eit.ac.nz), email [scholarships@eit.ac.nz](mailto:scholarships@eit.ac.nz) or text your name, address and the word YR13 to 4631 and we will send you a Year 13 Scholarship pack.

## EIT is now part of Te Pūkenga

Te Pūkenga brings together New Zealand's Institutes of Technology, Polytechnics, and Industry Training Organisations to build a network of on job, on-campus and online learning. The services we offer not only

remain, they are strengthened by being part of the extensive Te Pūkenga network around the country. Your enrolment for study in 2024 will see you enrolling with Te Pūkenga and becoming part of the extensive Te Pūkenga network around the country.

## The experience you need & the support to succeed

When you study at EIT | Te Pūkenga you'll get the kind of experiences that will help you gain the knowledge and skills to get ahead.

You'll also be supported by lecturers and tutors who are here for you, within a learning environment where you are treated as an individual, not just a number.

They'll know your name and you'll receive one-on-one attention to make sure you get the support to succeed.

## Experienced lecturers

At EIT | Te Pūkenga, you can be confident in the quality of our teaching and your learning experience.

EIT | Te Pūkenga is highly regarded in New Zealand for research excellence due to the quality of our community centred research, our publications and our external grant income provided by funding institutions who have confidence in our research capability. You can be confident your lecturers use the latest knowledge and research in their field of expertise to inform their teaching, and many are at the forefront of knowledge creation within their discipline area.

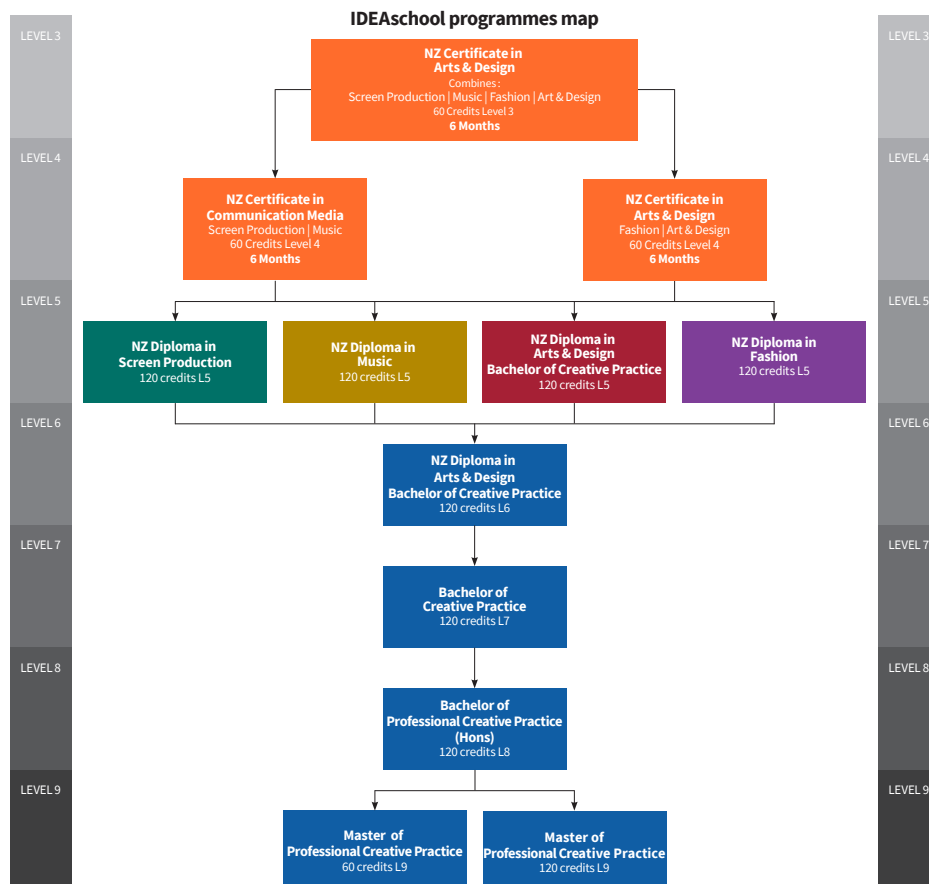
We value our partnership with learners and aim to provide quality education in a supportive environment, encouraging personal growth and professional development. Learners will be encouraged to assist in local music productions as opportunities arise.

Name	Creative background
<b>Svetlana Eliason</b> <i>Fellow of the HEA, MMus (Popular Music Performance), PG Cert Tchg &amp; Lning Discipline Leader</i>	Svetlana recently relocated to Hawke's Bay from the UK, where she was a Course Leader of the BMus Popular Music Performance programme at BIMM London. Svetlana is a professional musician and educator with over 20 years experience in performance and tertiary education. As a touring bass player for Moby, Svetlana travelled around the planet several times; her personal highlight being Moby's Glastonbury 2003 Pyramid Stage headline.
<b>Christopher Beernink</b> <i>MMus, BMus (Hons) Lecturer</i>	Chris' teaching practice has a focus on music technology, guitar and bass. He is also an active composer in the jazz and extreme metal spheres. Chris is a member of the Royal New Zealand Air Force Band, playing both double and electric bass in the main concert band and jazz orchestra. He also plays electric guitar for the RNZAF's covers band which plays in various styles including funk, rock and jazz.
<b>Part-time and guest lecturers</b>	Winston Pitt and guest lecturers from the music industry will also make presentations two to three times per year.
<b>Laura Parsons</b>	Music Technician
<b>Victoria Nicolle</b>	Programme Administrator

## Course descriptions

Course no.	Brief description	NZQA level	No. of credits
	<b>Single Release</b>		
DM5.10	This project is an introduction to both composition and the software we specialize in – Pro Tools and Ableton Live. Through the use of these programmes, learners will develop the basic knowledge and skills required to record and release a piece of music.	5	15
	<b>Career Plan</b>		
DM5.50	This project contains core skills which develop the knowledge and skills required to explore options for an individual career plan.	5	15
	<b>Covers Performance</b>		
DM5.60	This project aims to allow learners to develop the knowledge and skills to produce and deliver a high quality performance of multi-genre cover material. The performance will be staged in front of a live audience and demands a high level of stagecraft.	5	15
	<b>Transcription</b>		
DM5.30	By completing this project, learners will develop the advanced technical skills required to create notated transcriptions and reproduce music while gaining a comprehensive understanding of relevant copyright legislation.	5	15
	<b>Studio Performance</b>		
DM5.40	Through the production of this performance, learners will develop the knowledge and skills required to collaboratively create, coordinate and mix a complete studio performance using advanced Pro Tools techniques.	5	15
	<b>EP Package</b>		
DM5.80	The EP Package project extends the skills learned in DM5.10 and provides the skills required to produce an extended play (EP) of original music at an intermediate level. The works will contain both sequenced and live recorded audio.	5	30
	<b>Original Performance</b>		
DM5.90	By completing this project, learners will develop the knowledge and skills to (i) analyse their own and others' compositions and (ii) collaboratively produce and deliver a high-quality performance of original material in collaboration with other musicians.	5	15

## Programme pathway



# How to enrol

There is an easy 3-step process to follow when enrolling at EIT | Te Pūkenga.

## Step 1

Check out [eit.ac.nz](http://eit.ac.nz) to see the programmes available for you to study. A copy of the course information for each programme is available on our website.

## Step 2

You can now use your RealMe verified identity to apply for study at EIT | Te Pūkenga. If you use your RealMe verified identity you will no longer be sent a copy of your application form to sign. You also will not need to provide us with a copy of your primary ID.

If you apply online without using RealMe then you will be sent a summary of your enrolment to check and sign. It will also include course selection forms which you need to complete and return. Your enrolment cannot progress until you have sent the summary and forms back to us.

You can also apply using a paper enrolment form. Please call us on **0800 22 55 348** and we will send you one out.

You will receive an acceptance letter from your Faculty with programme information. This will include the start date of your study and any special information regarding your programme. Depending on your chosen programme of study, you may be invited to attend an interview before you are accepted.

## Step 3

Arrangement for full payment of enrolment fees must be made before the start of your programme. You will receive an invoice with payment details.

**Fees-free government scheme:** Tertiary education is fees-free for eligible domestic tertiary students. To check if you are eligible, go to [FeesFree.govt.nz](http://FeesFree.govt.nz) and enter your National Student Number (NSN). If you are not eligible you will be responsible for paying your fees.

**Scholarships and grants:** Scholarships and grants make life easier by helping to cover your fees, other costs and living expenses while you study. You don't always need to be an academic high-flyer to qualify. You can find out more about scholarships and other options for paying your fees at [eit.ac.nz](http://eit.ac.nz).

**StudyLink:** If you need to pay for your own study you can choose to apply for your Student Loan and Student Allowance with StudyLink. You should do this early, even if you haven't yet been accepted on your programme. You can change your details later if anything changes. Visit [studylink.govt.nz](http://studylink.govt.nz) to find out more about StudyLink.

## Student services levy

The student services levy is a compulsory non-tuition fee that is charged to students enrolled at EIT | Te Pūkenga. The levy is to contribute to the provision of quality student services that support learning. The funds received by EIT | Te Pūkenga from the levy are ring-fenced, meaning they can only be spent on student services.

## Student loans and allowances

StudyLink is a service of the Ministry of Social Development. Apply well before your programme begins (even if you haven't been accepted yet) so you'll be ready to get your payments when you need them most.

Check out what you qualify for at [studylink.govt.nz](http://studylink.govt.nz).



Disclaimer: The Eastern Institute of Technology Limited is a business division of Te Pūkenga - New Zealand Institute of Skills and Technology. All information in this publication pertains to New Zealand Citizens or Permanent Residents, and is correct at the time of printing but is subject to change. EIT | Te Pūkenga reserves the right to amend/withdraw programmes or courses. From 2023 programmes may be subject to review as part of the Reform of Vocational Education and Training. As the review is ongoing, this document is correct at the time of publishing but the courses outlined may change over time. For full programme entry requirements visit [eit.ac.nz](http://eit.ac.nz).