

# Diploma in Video & Electronic Media 2010

Faculty of Arts & Social Sciences  
Te Manga Pūtaiao-Toi

The EIT Diploma in Video & Electronic Media is a full-time, two year programme that offers stimulating and practical Level 6 studies and provides a pathway to a professional qualification in the field of video, film and multimedia production.

The EIT Diploma in Video & Electronic Media enables graduates to become independent producers of video material to broadcast, or to electronic multimedia publishing, standards. In particular, the programme is designed to:

- give practical / technical skills in all facets of video production
- create understanding of the language of light, vision and sound, as used in the industry
- give organisational and management skills to complete audio-visual projects
- teach script writing of a short video
- create an independent producer of audio visual (av) material
- teach working ethics, standards and regulations of the industry
- create effective, team working professionals.

There is one entry point per year:

- February

You are welcome to make an appointment to discuss your study options with our staff and to view our facilities.

If you have any questions please feel free to contact us.

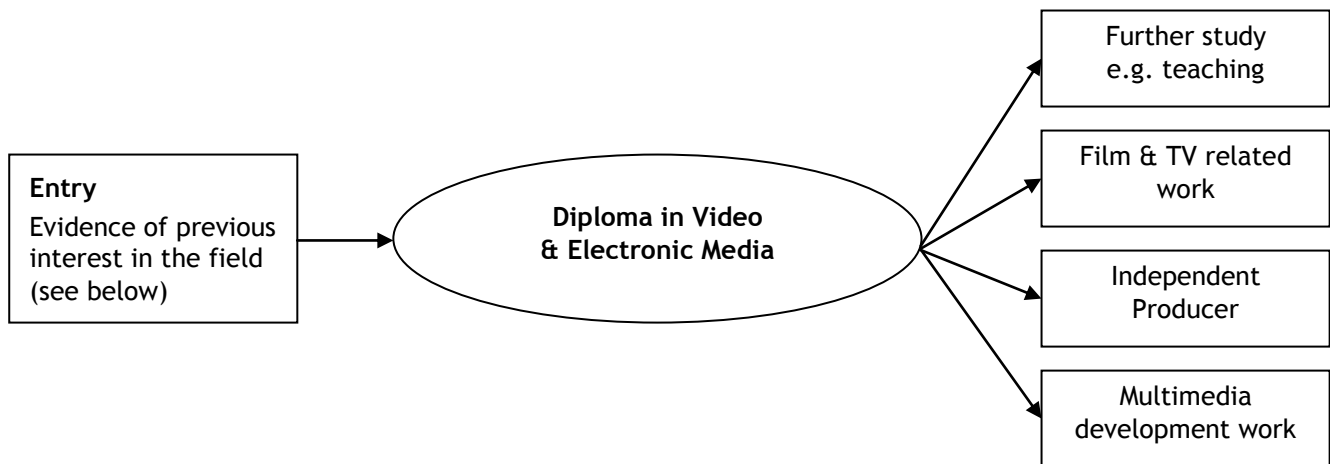
Adele Mareikura, School of Arts & Design  
Faculty of Arts & Social Sciences  
Phone: (06) 974 8000, ext 5019  
Email: [adelem@eit.ac.nz](mailto:adelem@eit.ac.nz)



*Te Whare Takiura o Kahungunu*

## FUTURE PATHWAYS/EMPLOYMENT OPPORTUNITIES

---



Graduates will be able to produce their own programmes for TV broadcasting, DVD, and CD-ROM, to publishing standards.

## PROGRAMME SUMMARY

---

Qualification	EIT Diploma
Programme Level	6
Length	2 years
Study Options	Full-time
Hours of Study / Class Times	Classes are scheduled between 9am and 3pm, Monday - Thursday
Total Number of Credits	240 Credits

## PROGRAMME LENGTH

The Diploma in Video & Electronic Media commences on 15 February 2010 and concludes on 12 November 2010.

Classes are scheduled between 9am and 3pm, Monday through Thursday.

Timetables will be available on the EIT website [www.eit.ac.nz](http://www.eit.ac.nz) from September/October, 2009. If you require a paper copy to be sent out to you please contact the secretary.

SEMESTER 1		SEMESTER 2	
<b>PROGRAMME STARTS</b>	Monday, 15 February	<b>Classes Start</b>	Monday, 12 July
<b>Easter Holiday</b>	Good Friday, 2 April Easter Monday, 5 April	<b>Mid-Semester Holidays (Term 3)</b>	Monday, 20 September - Friday, 1 October
<b>Mid-Semester Holidays (Term 1)</b>	Monday, 5 April - Friday, 16 April	<b>Term 4 starts</b>	Monday, 4 October
<b>Term 2 starts</b>	Monday, 19 April	<b>Hawke's Bay Anniversary Day</b>	Friday, 22 October
<b>Queen's Birthday</b>	Monday, 7 June	<b>Labour Day</b>	Monday, 25 October
<b>Semester 1 Ends (Term 2)</b>	Friday, 25 June	<b>PROGRAMME ENDS</b>	Friday, 12 November
<b>Mid-Year Holidays</b>	Monday, 28 June - Friday, 9 July		

## STUDENT WORK COMMITMENTS

Duration	33 weeks
Hours per week	21 hours
Individual Study hours	15 hours per week
Credits per semester -full-time students	120
One credit generally equals	10 student learning hours. Learning hours include both classroom and study hours.

This programme of study includes holiday or study breaks during which there are no scheduled classes. These breaks usually align with school holidays, but this may not always be the case. Students may find it necessary to spend time during non-teaching weeks working on assignments and other study-related tasks set during the teaching weeks.

## ENTRY REQUIREMENTS

---

All applicants will have some evidence of prior interest in the field such as: (either/or) photography, computer graphics, video, audio or stage management. All applicants are required to attend a compulsory information evening (see below).

### **Standard Entry:**

All applicants will have evidence of:

- NCEA Level 2 or
- Successful completion of a bridging programme.

### **Non-standard Entry:**

- If you do not meet the criteria above, but present evidence of ability to succeed (e.g. maturity, life experience, work experience and/or other study) you may apply for non-standard entry.
- You must be aged 20 years or more by March 1 of the first year of enrolment in the programme.
- If you do not meet the standard entry criteria and are not aged 20 years or more by March 1 of the first year of enrolment in the programme, you may still apply, but your position on the programme will be at the discretion of the Programme Co-ordinator.

**Year One Applicants** - Please complete the attached "Additional Information Sheet" and return this together with your enrolment form and a witnessed copy of your passport or birth certificate (i.e. photocopies must be signed by a JP or an EIT Faculty/Registry administration staff member stating that the original Certified Birth Certificate / Passport has been sighted).

**Information evening** - This will be held in November 2009 (date to be announced). Attendance is compulsory.

### **English Language Entry Requirement**

Students are required to have attained an acceptable level of English language fluency. This may be demonstrated in a variety of ways, including successful study in English, approved scores on IELTS (5.5 Academic) tests, completion of accepted international equivalents, or completion of an EIT Hawke's Bay assessment.

### **Entry With Credit**

You may already have some knowledge or skills that can be recognised as part of your intended study. This may take a number of different forms including study while at high school, study at a private training establishment, workplace training, other tertiary study, life experiences or voluntary work. If you think you may qualify, you may want to apply for Cross Credit or Recognition of Prior Learning.

- Cross Credit is based on the equivalency of courses or qualifications. You would apply for Cross Credit if you have passed a very similar course at the same level.
- Recognition of Prior Learning (RPL) is based on the assessment of your current knowledge and skills. You would apply for RPL if you had gained the relevant knowledge and skills through life experiences and informal learning situations.

You will be asked to provide details of anything that you would like to be considered as credit toward your intended programme of study, as part of your application.

**You must apply prior to enrolment.** RPL and Cross Credit cannot be awarded for a course if you are already enrolled in that course. An original transcript or notice of results from the Institution at which you previously studied (or verified copies) will be required for all applications.

For further information and enquiries about RPL and Cross Credit please contact Trent Mabbett, telephone (06) 974 8000, ext 5004.

## ACADEMIC STAFF

---

Our lecturers are highly trained professionals with particular areas of expertise in film, video and multimedia production. Staff also maintain contact with other professionals through organisations such as local and national film and video producers.

Staff Member	Academic Qualifications
Chris Verburg	Diploma in Adult Education, Workplace Assessor. Chris has lifelong experience in film, video, audio and photography, including feature film and TV, Sound Mixer at the National Film Unit, Audio Visual Operator at the DSIR and Professional Photographer.
Wayne Dobson	Diploma in Adult Education, practising professional Producer, Videographer and Editor for Hawke's Bay TV market.
Claire McCormack	BA Honours Film Study, practising Scriptwriter, Oral Historian and Electronic Media Artist for Earthbound.
Jonathan Rodgers	Design Production. BA Visual Arts, years of Feature Film experience. Worked on Lord of the Rings, King Kong, Frighteners.
Peter Janes	Lighting, Camera, Directing. Over 20 years of experience as DOP, Camera Op. in TV and Film, (Xena, Jacksons Wharf, Mercy Peak, The Tribe Pio, The Topp Twins, Shortland Street); recently worked on TV series shot in 35mm (The Power Rangers).

Guest lecturers from the TV / film industry will also make presentations (2-3 per year).

We value our partnership with students and aim to provide quality education in a supportive environment, encouraging personal growth and professional development. Students will be encouraged to assist in local films and TV productions as opportunities arise.

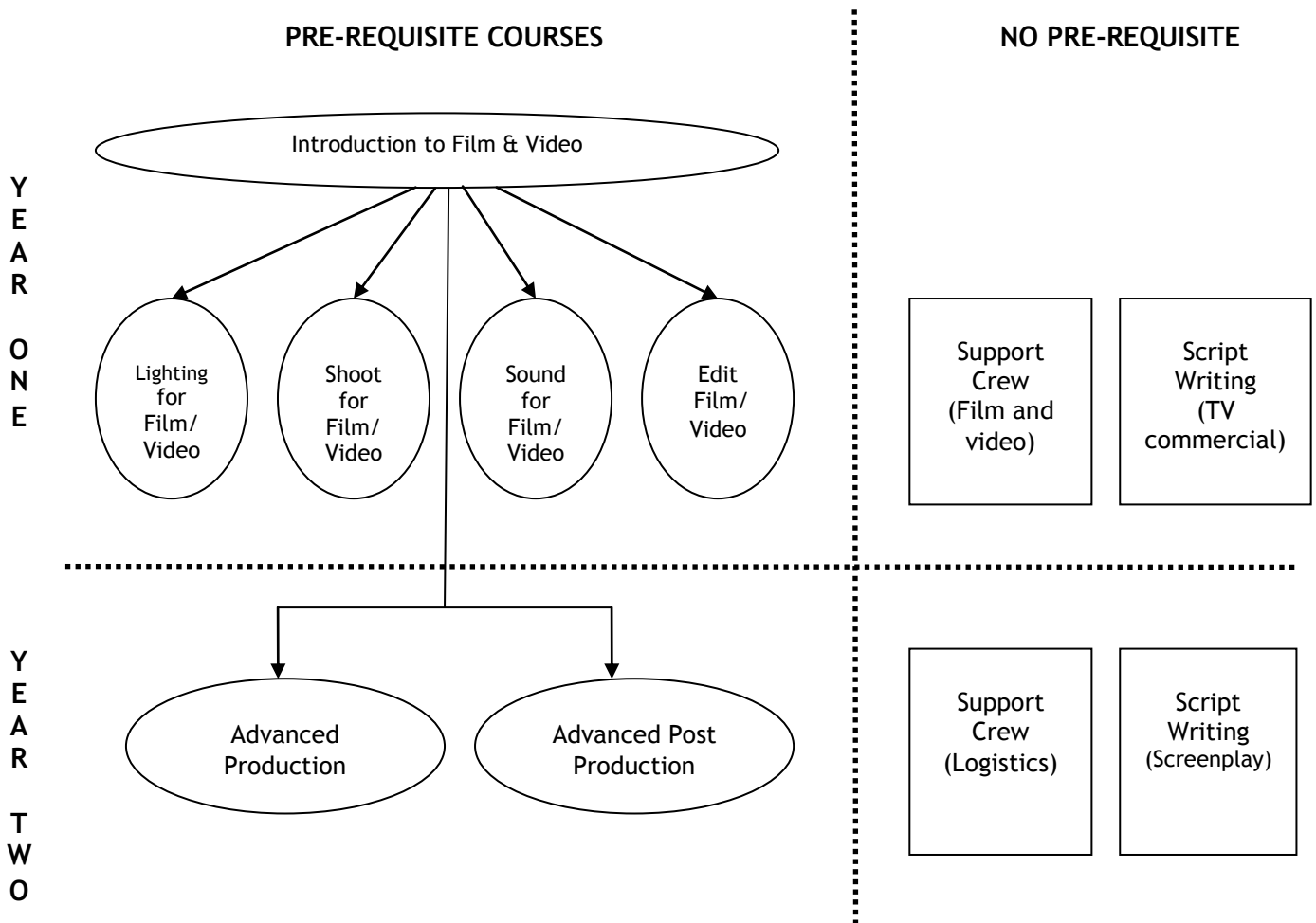
## FACILITIES

---

Specialist facilities on the Taradale Campus will further improve students' ability to finish products in a simulated professional environment. These studios have state-of-the-art equipment and software that is updated yearly to maintain currency. Year 2 students produce their material on Professional High Definition Equipment. The facilities are known to be one of the best environments created for the purpose of teaching this specialist field at sole disposal of the video and electronic media students.

## PROGRAMME INFORMATION

The programme has been designed to give students as much “hands on” experience with camera, sound and editing equipment as practical. We primarily use state of the art digital cameras for recording images then edit those images on non-linear digital editing systems, as used in the professional industry.



## COURSE DESCRIPTORS

### Year One Course Descriptors

Course number	Course description	Level	Credits
DVM 2.01	<p><b>Introduction to Film &amp; Video</b></p> <p>The course is designed to introduce the learner to key aspects of film and video production. It incorporates:</p> <ul style="list-style-type: none"> <li>a) Sound and Vision theories and properties</li> <li>b) Film/Video production</li> <li>c) Film/Broadcast Law</li> <li>d) Sound/Vision Systems</li> <li>e) History of Film and television</li> <li>f) Personnel in Film/Video.</li> </ul>	2	20

<b>DVM 3.01</b>	<b>Lighting for Film/Video</b> The course is designed to cover key aspects of lighting for video and electronic media and incorporates: a) Basic Lighting b) Design for Film and Video c) Light Film/Video d) Equipment Handling e) Safe Practice.	3	20
<b>DVM 3.02</b>	<b>Shoot for Film/Video</b> The course is designed to cover key aspects of video production for film, video and electronic media. It incorporates: a) Plan a Sequence b) Shoot a Sequence c) Make a Short Video.	3	20
<b>DVM 4.01</b>	<b>Sound for Film/ Video</b> The course is designed to cover key aspects of sound production for video and electronic media and incorporates: a) Record Sound b) Mix location sound for film and video c) Track lay for a production.	4	20
<b>DVM 4.02</b>	<b>Edit Film/Video</b> The course is designed to cover key aspects of editing video production for film, video and electronic media. It incorporates: a) Edit a basic sequence for video b) Edit a Video c) Add Simple SFX to edit.	4	20
<b>DVM 4.03</b>	<b>Support Crew (Film and Video)</b> The course is designed to cover key aspects of Crew supporting a director in the shooting of projects. It will enable students to contribute to effective working relationships in the film and television industry.	4	10
<b>DVM 4.04</b>	<b>Script writing (TV Commercial)</b> The course is designed to cover key aspects of scriptwriting for television commercials. It incorporates: a) Knowledge of Advertising principles b) Writing a proposal c) Writing a Script d) Prepare a client storyboard.	4	10
<b>Total credits for Year One</b>			<b>120</b>

## Year Two Course Descriptors

Course number	Course description	Level	Credits
DVM 4.05	<b>Multimedia</b> The course is designed to introduce the learner to key aspects of multimedia production and incorporates two achievements: a) Produce audio for authoring for a multimedia project b) Produce video for authoring for a multimedia project.	4	15
DVM 5.01	<b>Support Crew (Logistics)</b> This course gives students the ability to arrange the equipment and transport for a shoot, including: Keep records of equipment; advise clients of alternatives where equipment is not available; organise transport; complete necessary documentation.	5	10
DVM 5.02	<b>Script Writing (Screenplay)</b> The course is designed to cover key aspects of script writing. Students will write a short screenplay or television film.	5	20
DVM 6.01	<b>Advanced Production</b> The course is designed to cover key aspects of production for film, video and electronic media and incorporates two elements: a) Assist with and operate a single Camera b) Direct a short movie	6	35
DVM 6.02	<b>Advanced Post-Production</b> The course is designed to cover key aspects of sound post-production for film, video and electronic media and incorporates the following elements: a) Direct Sound Operations to achieve a Final Sound Mix b) Produce First Cut Material from film or electronic editing c) Produce Fine Cut Material after film or electronic editing	6	40
<b>Total credits for Year Two</b>			<b>120</b>
<b>TOTAL</b>			<b>240</b>

For more information about course content please contact the Video and Electronic Media Secretary on (06) 974 8000, ext 5019.

## ASSESSMENTS

---

Theory components will be assessed by written/multiple choice assessments.

Practical assessments will be given throughout the year and on-going assessments are done during practical exercises.

## TRANSFERS /CROSS CREDITS

---

This qualification has been approved by the New Zealand Qualifications Authority.

This programme leads to the award of a nationally approved qualification. This qualification may be delivered at a number of other tertiary institutes around New Zealand. If you were to transfer to one of those other institutes you may be granted academic credit for some of the papers completed but this is at the discretion of the other institute.

*Please note: Fees are not transferable between institutes.*

## ACCREDITATION

---

The Eastern Institute of Technology (EIT Hawke's Bay) is an accredited tertiary education provider under the provisions of the Education Act 1989.

## FEES/COSTS

---

**Please note:**

- All costs quoted include GST.
- These fees apply to NZ Citizens and NZ Permanent Residents only.

Programme Fee: Year One	\$5,168
Course Related Fee	\$24
Student Association Fee	\$110
<b>Total</b>	<b>\$5,302</b>

Programme Fee: Year Two	\$5,136
Digital Media Storage	\$58
Student Association Fee	\$110
<b>Total</b>	<b>\$5,304</b>

### ADDITIONAL COSTS

Year One	Approximately \$50 (per year) for stationery and DVD-R
Year Two	Approximately \$50 (per year) for stationery and DVD-R

Upon completion of degree and diploma studies, students who wish to attend the graduation ceremony will be required to hire academic regalia.

## STUDENT FINANCE

---

### Student Loans and Allowances

Financial assistance for full-time and some part-time students is available through the Student Loan scheme. Some students may also be eligible for Student Allowances. Student Loans and Allowances are administered by StudyLink, a service provided by the Ministry of Social Development. For more information and for application forms, please contact:

STUDYLINK on 0800 88 99 00 or online at [www.studylink.govt.nz](http://www.studylink.govt.nz)

**Note:** International students are not eligible to apply for StudyLink Student Loans and Allowances (see below).

### Training Incentive Allowances

Students who have applied to the Department of Work and Income New Zealand for a Training Incentive Allowance must ensure fees are paid prior to the programme start date or we ask that a confirmation of fees letter be handed to the Enrolment Officers.

### Scholarships and Grants

You may be eligible to apply for a wide variety of different funding options. Many scholarships or grants are available to new and returning EIT Hawke's Bay students. Each scholarship or grant lists different criteria, such as gender, age or previous experience. To find out more about what is available for you, please call the EIT Infoline on 0800 22 55 348 or visit our website [www.eit.ac.nz](http://www.eit.ac.nz).

## APPLICATION PROCESS

---

Successful applicants will receive a letter of acceptance from the appropriate Faculty and will be asked to confirm their place on the programme. Please contact the Registry Manager on (06) 974 8000, ext 6026 if you wish to discuss enrolment fee payment arrangements. Please refer to the chart on page the page.

## INTERNATIONAL STUDENTS

---

If you do not have permanent residency in New Zealand, a different application form, application process and fee structure applies. Please contact the International Section on telephone +64 6 974 8902 for the correct application form and for further information regarding fees.

## DISCLAIMER

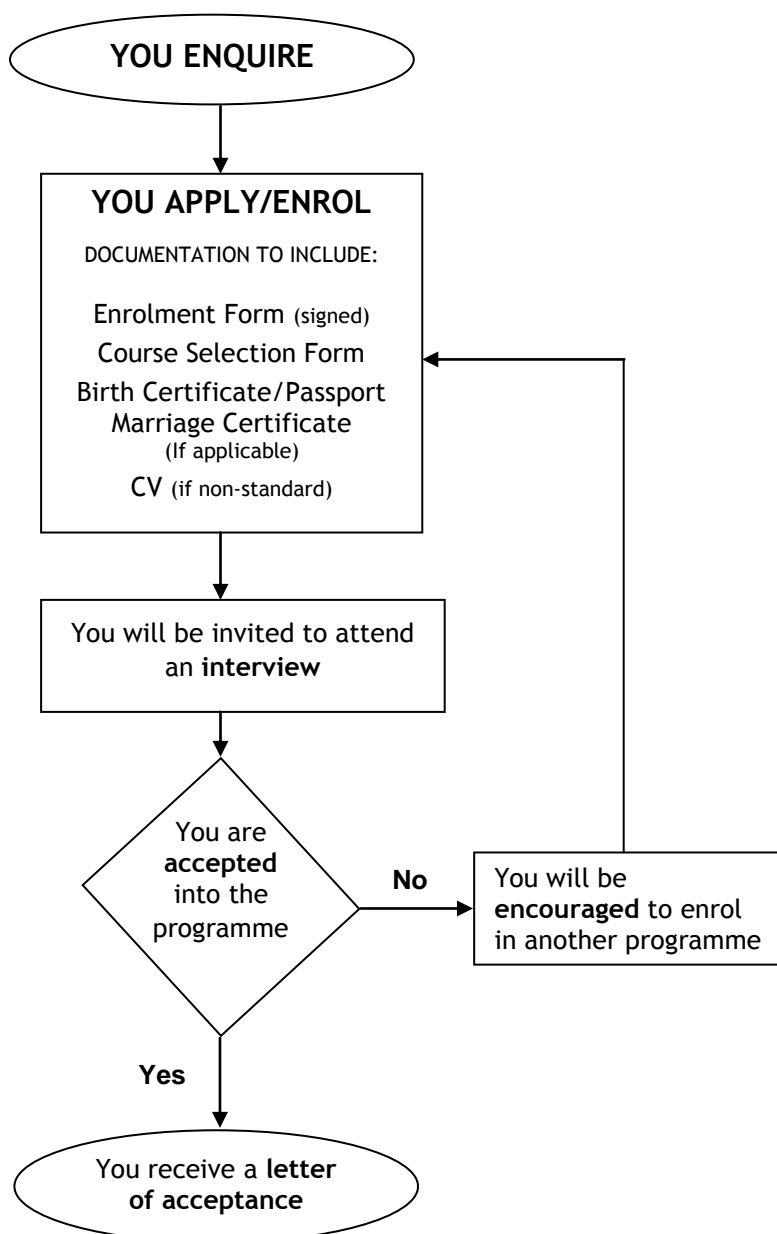
---

Information contained in this publication is correct at the time of printing, but may be subject to change. While all reasonable efforts will be made to ensure listed programmes/courses are offered and regulations are current, the Institute reserves the right to change content or method of delivery, to withdraw any programme or course of study, or to impose limitations on enrolment, should circumstances require this.

Some programmes/courses mentioned in EIT publications are offered subject to final approval and accreditation or to sufficient enrolments being received.

For the latest information visit our website at [www.eit.ac.nz](http://www.eit.ac.nz)

### ENROLMENT PROCESS FLOWCHART



Timetables will be available on the website from September/October, 2009

**DIPLOMA IN VIDEO AND ELECTRONIC MEDIA 2010**  
*Additional Information*

Please complete this page in your own handwriting and include it with your enrolment form

NAME: \_\_\_\_\_

**PLEASE LIST ANY RELEVANT INTERESTS/HOBBIES/EXPERIENCE:**

1.	
2.	
3.	
4.	
5.	

Please give a statement (3-5 sentences) outlining why you have chosen this particular programme.

---

---

---

---

---

---

---

---

---

---

---

---

---

---

---

---

---

---

---

---

---

---

---

---

**THANK YOU FOR SUPPLYING THESE EXTRA DETAILS**

**NB. This is not an enrolment form but a form to provide us with additional information.**